

Datasheet for ABIN1714315  
**anti-GLT25D2 antibody (AA 501-600)**[Go to Product page](#)

## 1 Image

## Overview

Quantity:	100 µL
Target:	GLT25D2
Binding Specificity:	AA 501-600
Reactivity:	Mouse, Rat
Host:	Rabbit
Clonality:	Polyclonal
Conjugate:	This GLT25D2 antibody is un-conjugated
Application:	ELISA, Immunofluorescence (Cultured Cells) (IF (cc)), Immunofluorescence (Paraffin-embedded Sections) (IF (p)), Immunohistochemistry (Paraffin-embedded Sections) (IHC (p)), Immunohistochemistry (Frozen Sections) (IHC (fro)), Immunocytochemistry (ICC)

## Product Details

Immunogen:	KLH conjugated synthetic peptide derived from human GLT25D2
Isotype:	IgG
Cross-Reactivity:	Mouse, Rat
Predicted Reactivity:	Human,Cow,Sheep,Pig,Horse,Chicken
Purification:	Purified by Protein A.

## Target Details

Target:	GLT25D2
---------	---------

## Target Details

Alternative Name: GLT25D2 ([GLT25D2 Products](#))

Background: Synonyms: C1orf17, Glt25d2, Glycosyltransferase 25 family member 2, GT252\_HUMAN, Hydroxylysine galactosyltransferase 2, Procollagen galactosyltransferase 2, RP11-498P10.2.  
Background: GLT25D2 is a 626 amino acid protein that localizes to endoplasmic reticulum lumen and belongs to the glycosyltransferase 25 family. Possessing beta-galactosyltransferase activity, GLT25D2 transports beta-galactose to hydroxylysine residues on collagen but lacks glucosyltransferase activity. GLT25D2 is expressed in skeletal muscle and brain, and is encoded by a gene located on human chromosome 1q25.3, a region associated with the hereditary prostate cancer (HPC1) locus. Human chromosome 1 spans 260 million base pairs, contains over 3,000 genes, comprises nearly 8 % of the human genome and houses a large number of disease-associated genes, including those that are involved in familial adenomatous polyposis, Stickler syndrome, Parkinson's disease, Gaucher disease, schizophrenia and Usher syndrome.

Gene ID: 23127

## Application Details

Application Notes: ELISA 1:500-1000  
IHC-P 1:200-400  
IHC-F 1:100-500  
IF(IHC-P) 1:50-200  
IF(IHC-F) 1:50-200  
IF(ICC) 1:50-200  
ICC 1:100-500

Restrictions: For Research Use only

## Handling

Format: Liquid

Concentration: 1 µg/µL

Buffer: 0.01M TBS( pH 7.4) with 1 % BSA, 0.02 % Proclin300 and 50 % Glycerol.

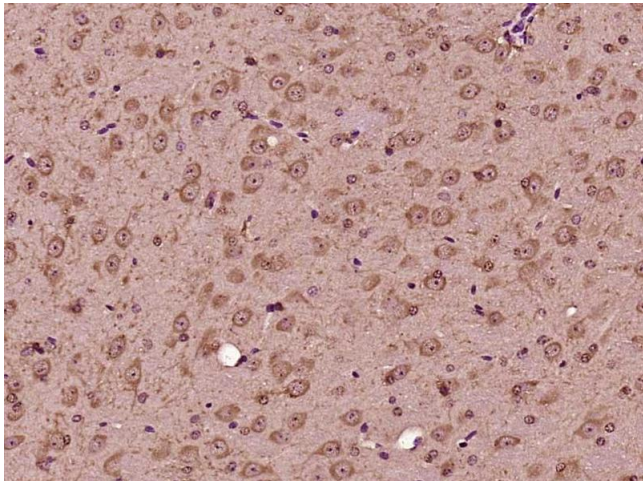
Preservative: ProClin

Precaution of Use: This product contains ProClin: a POISONOUS AND HAZARDOUS SUBSTANCE, which should be handled by trained staff only.

## Handling

Storage:	4 °C,-20 °C
Storage Comment:	Shipped at 4°C. Store at -20°C for one year. Avoid repeated freeze/thaw cycles.
Expiry Date:	12 months

## Images



### Immunohistochemistry (Paraffin-embedded Sections)

**Image 1.** Paraformaldehyde-fixed, paraffin embedded mouse brain; Antigen retrieval by boiling in sodium citrate buffer (pH6) for 15min; Block endogenous peroxidase by 3% hydrogen peroxide for 30 minutes; Blocking buffer (normal goat serum) at 37°C for 20min; Antibody incubation with GLT25D2 Polyclonal Antibody, Unconjugated (bs-13379R) at 1:200 overnight at 4°C, followed by a conjugated secondary and DAB staining.