

Datasheet for ABIN1714339
anti-ALDH1A1 antibody (AA 201-300)

3 Images

2 Publications

[Go to Product page](#)

Overview

Quantity:	100 µL
Target:	ALDH1A1
Binding Specificity:	AA 201-300
Reactivity:	Human, Mouse
Host:	Rabbit
Clonality:	Polyclonal
Conjugate:	This ALDH1A1 antibody is un-conjugated
Application:	Western Blotting (WB), ELISA, Flow Cytometry (FACS), Immunohistochemistry (Paraffin-embedded Sections) (IHC (p)), Immunocytochemistry (ICC), Immunofluorescence (Cultured Cells) (IF (cc)), Immunofluorescence (Paraffin-embedded Sections) (IF (p)), Immunohistochemistry (Frozen Sections) (IHC (fro))

Product Details

Immunogen:	KLH conjugated synthetic peptide derived from human ALDH1
Isotype:	IgG
Cross-Reactivity:	Human, Mouse
Predicted Reactivity:	Rat,Cow,Sheep,Horse,Rabbit
Purification:	Purified by Protein A.

Target Details

Target:	ALDH1A1
---------	---------

Target Details

Alternative Name:	ALDH1 (ALDH1A1 Products)
Background:	<p>Synonyms: ALDC, ALDH1, HEL-9, HEL12, PUMB1, ALDH11, RALDH1, ALDH-E1, HEL-S-53e, Retinal dehydrogenase 1, RALDH 1, ALHDII, Aldehyde dehydrogenase family 1 member A1, Aldehyde dehydrogenase, cytosolic, ALDH1A1</p> <p>Background: Binds free retinal and cellular retinol-binding protein-bound retinal. Can convert/oxidize retinaldehyde to retinoic acid (By similarity).</p>
Gene ID:	216
UniProt:	P00352
Pathways:	Dopaminergic Neurogenesis

Application Details

Application Notes:	<p>WB 1:300-5000</p> <p>ELISA 1:500-1000</p> <p>FCM 1:20-100</p> <p>IHC-P 1:200-400</p> <p>IHC-F 1:100-500</p> <p>IF(IHC-P) 1:50-200</p> <p>IF(IHC-F) 1:50-200</p> <p>IF(ICC) 1:50-200</p> <p>ICC 1:100-500</p>
Restrictions:	For Research Use only

Handling

Format:	Liquid
Concentration:	1 µg/µL
Buffer:	0.01M TBS(pH 7.4) with 1 % BSA, 0.02 % Proclin300 and 50 % Glycerol.
Preservative:	ProClin
Precaution of Use:	This product contains ProClin: a POISONOUS AND HAZARDOUS SUBSTANCE, which should be handled by trained staff only.
Storage:	4 °C,-20 °C
Storage Comment:	Shipped at 4°C. Store at -20°C for one year. Avoid repeated freeze/thaw cycles.

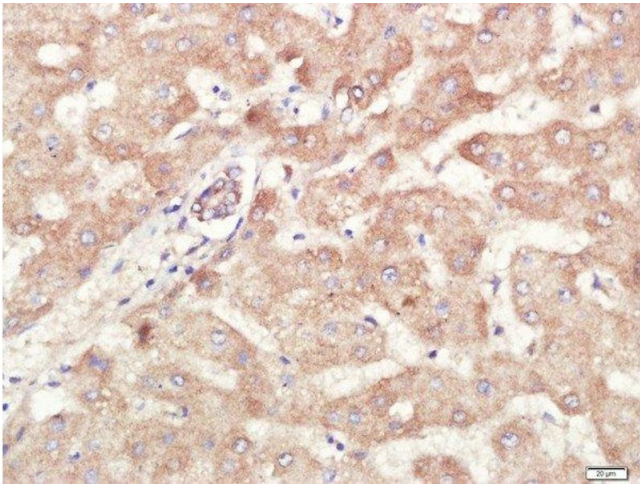
Expiry Date: 12 months

Publications

Product cited in: Zhou, Wu, Chen, Zhao, Zhang, Wang, Chen: "microRNA-143 is associated with the survival of ALDH1+CD133+ osteosarcoma cells and the chemoresistance of osteosarcoma." in: **Experimental biology and medicine (Maywood, N.J.)**, (2015) ([PubMed](#)).

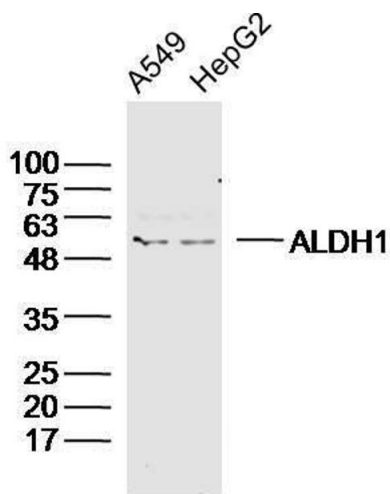
Qi, Zhao, Zhao, Liu, Li, Yu, Wei: "Sorting and identification of side population cells in the human cervical cancer cell line HeLa." in: **Cancer cell international**, Vol. 14, Issue 1, pp. 3, (2014) ([PubMed](#)).

Images



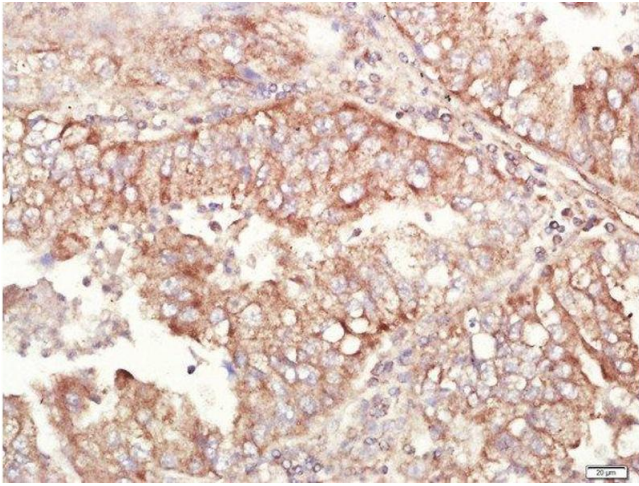
Immunohistochemistry (Paraffin-embedded Sections)

Image 1. Paraformaldehyde-fixed, paraffin embedded human liver carcinoma tissue, Antigen retrieval by boiling in sodium citrate buffer(pH6) for 15min, Block endogenous peroxidase by 3% hydrogen peroxide for 30 minutes, Blocking buffer (normal goat serum) at 37°C for 20min, Antibody incubation with Rabbit Anti-ALDH1 Polyclonal Antibody, Unconjugated at 1:400 overnight at 4°C, followed by a conjugated secondary and DAB staining



Western Blotting

Image 2. Human A549 and HepG2 cells probed with ALDH1 Polyclonal Antibody, unconjugated at 1:300 overnight at 4°C followed by a conjugated secondary antibody at 1:20000 for 60 minutes at 37°C.



Immunohistochemistry (Paraffin-embedded Sections)

Image 3. Paraformaldehyde-fixed, paraffin embedded human lung carcinoma tissue, Antigen retrieval by boiling in sodium citrate buffer(pH6) for 15min, Block endogenous peroxidase by 3% hydrogen peroxide for 30 minutes, Blocking buffer (normal goat serum) at 37°C for 20min, Antibody incubation with Rabbit Anti-ALDH1 Polyclonal Antibody, Unconjugated at 1:400 overnight at 4°C, followed by a conjugated secondary and DAB staining