

Datasheet for ABIN1714340  
**anti-HMG20B antibody (AA 1-100)**[Go to Product page](#)

## 1 Image

## Overview

|                      |   |
|----------------------|---|
| Quantity:            | 100 µL  |
| Target:              | HMG20B  |
| Binding Specificity: | AA 1-100  |
| Reactivity:          | Mouse   |
| Host:                | Rabbit  |
| Clonality:           | Polyclonal  |
| Conjugate:           | This HMG20B antibody is un-conjugated   |
| Application:         | Western Blotting (WB), ELISA, Immunofluorescence (Cultured Cells) (IF (cc)), Immunofluorescence (Paraffin-embedded Sections) (IF (p)), Immunohistochemistry (Paraffin-embedded Sections) (IHC (p)), Immunocytochemistry (ICC), Immunohistochemistry (Frozen Sections) (IHC (fro)) |

## Product Details

|                       |  |
|-----------------------|--|
| Immunogen:            | KLH conjugated synthetic peptide derived from human BRAF35 |
| Isotype:              | IgG  |
| Cross-Reactivity:     | Mouse  |
| Predicted Reactivity: | Human,Rat,Cow  |
| Purification:         | Purified by Protein A.                                     |

## Target Details

|         |        |
|---------|--------|
| Target: | HMG20B |
|---------|--------|

## Target Details

|                   |  |
|-------------------|--|
| Alternative Name: | BRAF35 ( <a href="#">HMG20B Products</a> )   |
| Background:       | <p>Synonyms: BRAF25, BRAF35, BRCA 2 Associated Factor 35 kDa, BRCA2 associated factor 35, BRCA2-associated factor 35, High Mobility Group Protein 20B, HM20B_HUMAN, HMG 20B, HMG box containing protein 20B, HMG box-containing protein 20B, HMG domain-containing protein 2, HMG domain-containing protein HMGX2, hmg20b, HMGX2, PP7706, pp8857, SMARCE1 related protein, SMARCE1-related protein, SMARCE1r, sox like, Sox like transcriptional factor, Sox-like transcriptional factor, SOXL, Structural DNA binding protein BRAF35, Structural DNA-binding protein BRAF35, SWI/SNF related, SWI/SNF related matrix associated actin dependent regulator of chromatin subfamily E member 1 related, SWI/SNF-related matrix-associated actin-dependent regulator of chromatin subfamily E member 1-related.</p> <p>Background: The breast cancer susceptibility gene (BRCA1) localizes to chromosome 17q. Mutations within this gene account for approximately 45 % of families with high incidence of breast cancer and at least 80 % of families with increased incidence of both early-onset breast cancer and ovarian cancer. A second breast cancer susceptibility gene, BRCA2, located on chromosome 13q12-13, also confers a high incidence of breast cancer, but unlike BRCA1, BRCA2 does not confer a substantially elevated risk of ovarian cancer. The BRCA2-Associated Factor 35 (BRAF35) protein forms a complex with BRCA2, which associates with condensed chromatin during histone H3 phosphorylation. BRAF35 expression levels are highest in proliferating tissues and parallel BRCA2 expression patterns. The structure of BRAF35 includes a kinesin-like coiled coil domain and a nonspecific DNA binding HMG domain. The chromatin localization of BRAF35 and antibody microinjection studies indicate a role for the BRAF35/BRCA2 complex in cell cycle regulation.</p> |
| Gene ID:          | 10362  |

## Application Details

|                    |                    |
|--------------------|--------------------|
| Application Notes: | WB 1:300-5000      |
|                    | ELISA 1:500-1000   |
|                    | IHC-P 1:200-400    |
|                    | IHC-F 1:100-500    |
|                    | IF(IHC-P) 1:50-200 |
|                    | IF(IHC-F) 1:50-200 |
|                    | IF(ICC) 1:50-200   |
|                    | ICC 1:100-500      |

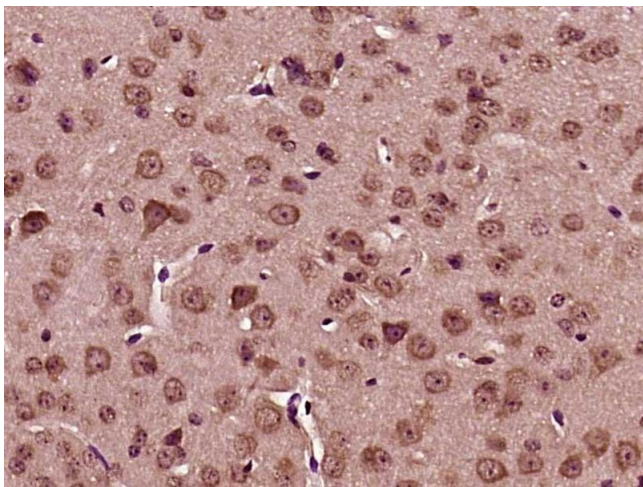
## Application Details

Restrictions: For Research Use only

## Handling

|                    |  |
|--------------------|--|
| Format:            | Liquid   |
| Concentration:     | 1 µg/µL  |
| Buffer:            | 0.01M TBS( pH 7.4) with 1 % BSA, 0.02 % Proclin300 and 50 % Glycerol.  |
| Preservative:      | ProClin  |
| Precaution of Use: | This product contains ProClin: a POISONOUS AND HAZARDOUS SUBSTANCE, which should be handled by trained staff only. |
| Storage:           | 4 °C,-20 °C  |
| Storage Comment:   | Shipped at 4°C. Store at -20°C for one year. Avoid repeated freeze/thaw cycles.                                    |
| Expiry Date:       | 12 months  |

## Images



### Immunohistochemistry (Paraffin-embedded Sections)

**Image 1.** Paraformaldehyde-fixed, paraffin embedded mouse brain; Antigen retrieval by boiling in sodium citrate buffer (pH6) for 15min; Block endogenous peroxidase by 3% hydrogen peroxide for 30 minutes; Blocking buffer (normal goat serum) at 37°C for 20min; Antibody incubation with BRAF35 Polyclonal Antibody, Unconjugated (bs-12883R) at 1:200 overnight at 4°C, followed by a conjugated secondary and DAB staining.