



[Go to Product page](#)

Datasheet for ABIN1714344
anti-C6ORF132 antibody (AA 1001-1188)

1 Image

Overview

Quantity:	100 µL
Target:	C6ORF132
Binding Specificity:	AA 1001-1188
Reactivity:	Human
Host:	Rabbit
Clonality:	Polyclonal
Conjugate:	This C6ORF132 antibody is un-conjugated
Application:	Western Blotting (WB), Immunofluorescence (Cultured Cells) (IF (cc)), Immunofluorescence (Paraffin-embedded Sections) (IF (p)), Immunohistochemistry (Paraffin-embedded Sections) (IHC (p)), ELISA, Immunohistochemistry (Frozen Sections) (IHC (fro)), Immunocytochemistry (ICC)

Product Details

Immunogen:	KLH conjugated synthetic peptide derived from human C6orf132
Isotype:	IgG
Cross-Reactivity:	Human
Predicted Reactivity:	Mouse,Rat,Cow,Sheep,Rabbit
Purification:	Purified by Protein A.

Target Details

Target:	C6ORF132
---------	----------

Target Details

Alternative Name: C6orf132 ([C6ORF132 Products](#))

Background: Synonyms: bA7K24.2, C6orf132, CF132_HUMAN, Chromosome 6 open reading frame 132, Uncharacterized protein C6orf132.

Background: Making up nearly 6 % of the human genome, chromosome 6 contains around 1,200 genes within 170 million base pairs of sequence. Deletion of a portion of the q arm of chromosome 6 is associated with early onset intestinal cancer suggesting the presence of a cancer susceptibility locus. Porphyria cutanea tarda is associated with chromosome 6 through the HFE gene which, when mutated, predisposes an individual to developing this porphyria. Notably, the PARK2 gene, which is associated with Parkinson's disease, and the genes encoding the major histocompatibility complex proteins, which are key molecular components of the immune system and determine predisposition to rheumatic diseases, are also located on chromosome 6. Stickler syndrome, 21-hydroxylase deficiency and maple syrup urine disease are also associated with genes on chromosome 6. A bipolar disorder susceptibility locus has been identified on the q arm of chromosome 6. The C6orf132 gene product has been provisionally designated C6orf132 pending further characterization.

Gene ID: 647024

Application Details

Application Notes: WB 1:300-5000
ELISA 1:500-1000
IHC-P 1:200-400
IHC-F 1:100-500
IF(IHC-P) 1:50-200
IF(IHC-F) 1:50-200
IF(ICC) 1:50-200
ICC 1:100-500

Restrictions: For Research Use only

Handling

Format: Liquid

Concentration: 1 µg/µL

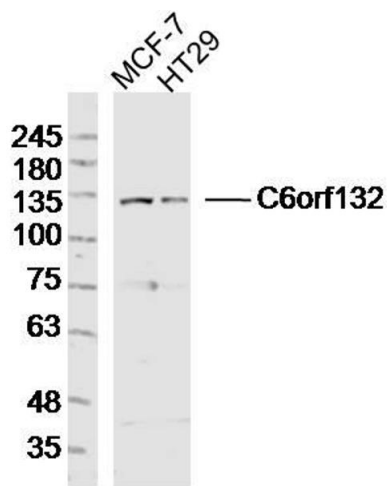
Buffer: 0.01M TBS(pH 7.4) with 1 % BSA, 0.02 % Proclin300 and 50 % Glycerol.

Preservative: ProClin

Handling

Precaution of Use:	This product contains ProClin: a POISONOUS AND HAZARDOUS SUBSTANCE, which should be handled by trained staff only.
Storage:	4 °C, -20 °C
Storage Comment:	Shipped at 4°C. Store at -20°C for one year. Avoid repeated freeze/thaw cycles.
Expiry Date:	12 months

Images



Western Blotting

Image 1. Lane 1: MCF-7 lysates Lane 2: HT29 lysates probed with C6orf132 Polyclonal Antibody, Unconjugated at 1:300 dilution and 4°C overnight incubation. Followed by conjugated secondary antibody incubation at 1:10000 for 60 min at 37°C.