

Datasheet for ABIN1714354
anti-DCLRE1C antibody (AA 301-400)[Go to Product page](#)

1 Image

Overview

Quantity:	100 µL
Target:	DCLRE1C
Binding Specificity:	AA 301-400
Reactivity:	Rat
Host:	Rabbit
Clonality:	Polyclonal
Conjugate:	This DCLRE1C antibody is un-conjugated
Application:	Western Blotting (WB), ELISA, Immunohistochemistry (Paraffin-embedded Sections) (IHC (p)), Immunofluorescence (Cultured Cells) (IF (cc)), Immunofluorescence (Paraffin-embedded Sections) (IF (p)), Immunohistochemistry (Frozen Sections) (IHC (fro)), Immunocytochemistry (ICC)

Product Details

Immunogen:	KLH conjugated synthetic peptide derived from human DCLREC1C/Artemis
Isotype:	IgG
Cross-Reactivity:	Rat
Predicted Reactivity:	Human,Mouse,Cow,Horse
Purification:	Purified by Protein A.

Target Details

Target:	DCLRE1C
---------	---------

Target Details

Alternative Name:	DCLREC1C/Artemis (DCLRE1C Products)
Background:	<p>Synonyms: SCIDA, SNM1C, A-SCID, RS-SCID, DCLREC1C, Protein artemis, DNA cross-link repair 1C protein, Protein A-SCID, SNM1 homolog C, hSNM1C, SNM1-like protein, DCLRE1C, ARTEMIS, ASCID</p> <p>Background: Required for V(D)J recombination, the process by which exons encoding the antigen-binding domains of immunoglobulins and T-cell receptor proteins are assembled from individual V, (D), and J gene segments. V(D)J recombination is initiated by the lymphoid specific RAG endonuclease complex, which generates site specific DNA double strand breaks (DSBs). These DSBs present two types of DNA end structures: hairpin sealed coding ends and phosphorylated blunt signal ends. These ends are independently repaired by the non homologous end joining (NHEJ) pathway to form coding and signal joints respectively. This protein exhibits single-strand specific 5'-3' exonuclease activity in isolation and acquires endonucleolytic activity on 5' and 3' hairpins and overhangs when in a complex with PRKDC. The latter activity is required specifically for the resolution of closed hairpins prior to the formation of the coding joint. May also be required for the repair of complex DSBs induced by ionizing radiation, which require substantial end-processing prior to religation by NHEJ.</p>
Gene ID:	64421
UniProt:	Q96SD1
Pathways:	DNA Damage Repair

Application Details

Application Notes:	WB 1:300-5000 ELISA 1:500-1000 IHC-P 1:200-400 IHC-F 1:100-500 IF(IHC-P) 1:50-200 IF(IHC-F) 1:50-200 IF(ICC) 1:50-200 ICC 1:100-500
Restrictions:	For Research Use only

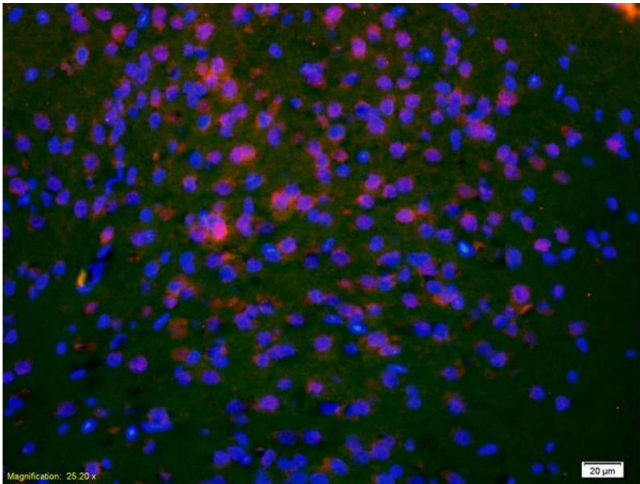
Handling

Format:	Liquid
---------	--------

Handling

Concentration:	1 µg/µL
Buffer:	0.01M TBS(pH 7.4) with 1 % BSA, 0.02 % Proclin300 and 50 % Glycerol.
Preservative:	ProClin
Precaution of Use:	This product contains ProClin: a POISONOUS AND HAZARDOUS SUBSTANCE, which should be handled by trained staff only.
Storage:	4 °C,-20 °C
Storage Comment:	Shipped at 4°C. Store at -20°C for one year. Avoid repeated freeze/thaw cycles.
Expiry Date:	12 months

Images



Immunofluorescence

Image 1. Formalin-fixed and paraffin-embedded rat brain labeled with Anti-DCLREC1C/Artemis Polyclonal Antibody, Unconjugated (ABIN1714354) 1:200, overnight at 4°C, The secondary antibody was Goat Anti-Rabbit IgG,Cy3 conjugated used at 1:200 dilution for 40 minutes at 37°C.