



[Go to Product page](#)

Datasheet for ABIN1714376  
**anti-GIPR antibody (AA 21-120)**

1 Image

### Overview

|                      |                                     |
|----------------------|-------------------------------------|
| Quantity:            | 100 µL                              |
| Target:              | GIPR                                |
| Binding Specificity: | AA 21-120                           |
| Reactivity:          | Human, Mouse                        |
| Host:                | Rabbit                              |
| Clonality:           | Polyclonal                          |
| Conjugate:           | This GIPR antibody is un-conjugated |
| Application:         | Western Blotting (WB), ELISA        |

### Product Details

|                       |                                                          |
|-----------------------|----------------------------------------------------------|
| Immunogen:            | KLH conjugated synthetic peptide derived from human GIPR |
| Isotype:              | IgG                                                      |
| Cross-Reactivity:     | Human, Mouse                                             |
| Predicted Reactivity: | Rat,Cow,Sheep,Rabbit                                     |
| Purification:         | Purified by Protein A.                                   |

### Target Details

|                   |                                                                                     |
|-------------------|-------------------------------------------------------------------------------------|
| Target:           | GIPR                                                                                |
| Alternative Name: | GIPR ( <a href="#">GIPR Products</a> )                                              |
| Background:       | Synonyms: PGQTL2, Gastric inhibitory polypeptide receptor, GIP-R, Glucose-dependent |

## Target Details

---

insulinotropic polypeptide receptor, GIPR

Background: This is a receptor for GIP. The activity of this receptor is mediated by G proteins which activate adenylyl cyclase.

---

Gene ID: 2696

---

UniProt: [P48546](#)

---

Pathways: [Positive Regulation of Peptide Hormone Secretion](#), [cAMP Metabolic Process](#), [Regulation of G-Protein Coupled Receptor Protein Signaling](#)

## Application Details

---

Application Notes: WB 1:300-5000  
ELISA 1:500-1000

---

Restrictions: For Research Use only

## Handling

---

Format: Liquid

---

Concentration: 1 µg/µL

---

Buffer: 0.01M TBS( pH 7.4) with 1 % BSA, 0.02 % Proclin300 and 50 % Glycerol.

---

Preservative: ProClin

---

Precaution of Use: This product contains ProClin: a POISONOUS AND HAZARDOUS SUBSTANCE, which should be handled by trained staff only.

---

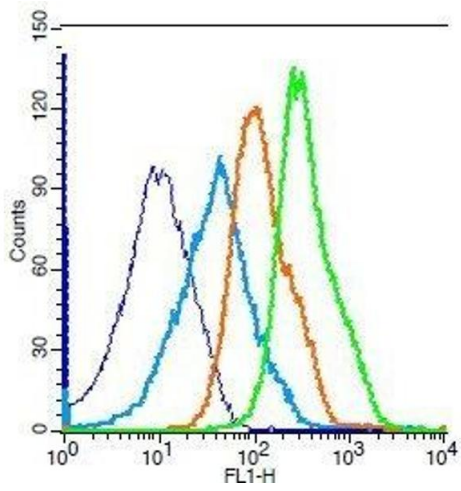
Storage: 4 °C,-20 °C

---

Storage Comment: Shipped at 4°C. Store at -20°C for one year. Avoid repeated freeze/thaw cycles.

---

Expiry Date: 12 months



### Flow Cytometry

**Image 1.** Mouse splenocytes probed with Rabbit Anti-GIPR Polyclonal Antibody, Unconjugated .