

Datasheet for ABIN1714416  
**anti-Annexin A13 antibody (AA 241-316)**[Go to Product page](#)

## 1 Image

## Overview

Quantity:	100 µL
Target:	Annexin A13 (ANXA13)
Binding Specificity:	AA 241-316
Reactivity:	Human
Host:	Rabbit
Clonality:	Polyclonal
Conjugate:	This Annexin A13 antibody is un-conjugated
Application:	Western Blotting (WB), ELISA, Immunofluorescence (Cultured Cells) (IF (cc)), Immunofluorescence (Paraffin-embedded Sections) (IF (p)), Immunocytochemistry (ICC), Immunohistochemistry (Paraffin-embedded Sections) (IHC (p)), Immunohistochemistry (Frozen Sections) (IHC (fro))

## Product Details

Immunogen:	KLH conjugated synthetic peptide derived from human Annexin A13
Isotype:	IgG
Cross-Reactivity:	Human
Predicted Reactivity:	Mouse,Rat,Dog,Horse,Rabbit
Purification:	Purified by Protein A.

## Target Details

Target:	Annexin A13 (ANXA13)
---------	----------------------

## Target Details

Alternative Name:	Annexin A13 ( <a href="#">ANXA13 Products</a> )
Background:	<p>Synonyms: ISA, ANX13, Annexin A13, Annexin XIII, Annexin-13, Intestine-specific annexin, ANXA13</p> <p>Background: The Annexins constitute a family of structurally-related, relatively abundant proteins that exhibit Ca<sup>2+</sup>-dependent binding to phospholipids. Annexins function in multiple aspects of cell biology including regulation of membrane trafficking, transmembrane channel activity, inhibition of phospholipase A2, inhibition of coagulation and mediation of cell-matrix interactions. Annexin A13 is considered the original progenitor of the 12 members of vertebrate Annexins. The expression of Annexin A13 is highly tissue-specific, being expressed only in intestinal and kidney epithelial cells. This expression is associated with a highly differentiated intracellular transport function. Two alternative splicing isoforms of Annexin A13 exist, both of which bind to rafts.</p>
Gene ID:	312
UniProt:	<a href="#">P27216</a>

## Application Details

Application Notes:	WB 1:300-5000 ELISA 1:500-1000 IHC-P 1:200-400 IHC-F 1:100-500 IF(IHC-P) 1:50-200 IF(IHC-F) 1:50-200 IF(ICC) 1:50-200 ICC 1:100-500
Restrictions:	For Research Use only

## Handling

Format:	Liquid
Concentration:	1 µg/µL
Buffer:	0.01M TBS( pH 7.4) with 1 % BSA, 0.02 % Proclin300 and 50 % Glycerol.
Preservative:	ProClin
Precaution of Use:	This product contains ProClin: a POISONOUS AND HAZARDOUS SUBSTANCE, which should be

## Handling

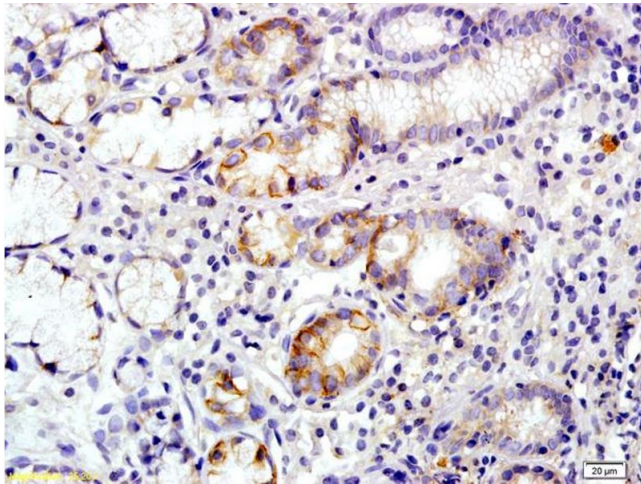
handled by trained staff only.

Storage: 4 °C,-20 °C

Storage Comment: Shipped at 4°C. Store at -20°C for one year. Avoid repeated freeze/thaw cycles.

Expiry Date: 12 months

## Images



### Immunohistochemistry

**Image 1.** Formalin-fixed and paraffin embedded human colon carcinoma labeled with Rabbit Anti Annexin A13 Polyclonal Antibody, Unconjugated (ABIN1714416) at 1:200 followed by conjugation to the secondary antibody and DAB staining