

Datasheet for ABIN1714448
anti-FREM1 antibody (AA 1201-1300)[Go to Product page](#)

1 Image

Overview

Quantity:	100 µL
Target:	FREM1
Binding Specificity:	AA 1201-1300
Reactivity:	Rat
Host:	Rabbit
Clonality:	Polyclonal
Conjugate:	This FREM1 antibody is un-conjugated
Application:	ELISA, Immunofluorescence (Cultured Cells) (IF (cc)), Immunofluorescence (Paraffin-embedded Sections) (IF (p)), Immunocytochemistry (ICC), Immunohistochemistry (Paraffin-embedded Sections) (IHC (p)), Immunohistochemistry (Frozen Sections) (IHC (fro))

Product Details

Immunogen:	KLH conjugated synthetic peptide derived from human FREM1
Isotype:	IgG
Cross-Reactivity:	Rat
Predicted Reactivity:	Human,Mouse,Dog,Horse
Purification:	Purified by Protein A.

Target Details

Target:	FREM1
---------	-------

Target Details

Alternative Name:	FREM1 (FREM1 Products)
Background:	<p>Synonyms: BC037594, BNAR, C9orf143, C9orf145, C9orf154, D430009N09, D630008K06, FLJ25461, FRAS1-related extracellular matrix protein 1, FREM 1, FREM1, FREM1_HUMAN, Heb, MOTA, Protein QBRICK, QBRICK, RGD1306981, RP11-265B7.2, RP23-410K19.1, TILRR.</p> <p>Background: FREM1 is a 2,179 amino acid protein that contains one C-type lectin domain, one Calx-beta domain and twelve CSPG repeats. Localized to the basement membrane of embryonic epidermal cells and secreted into extracellular space, FREM1 functions as an extracellular matrix protein that is essential for epidermal adhesion during embryogenesis and may also participate in epidermal differentiation. FREM1 exists as multiple alternatively spliced isoforms and is encoded by a gene which maps to human chromosome 9. Chromosome 9 contains 145 million base pairs and comprises 4 % of the human genome, encoding nearly 900 genes. Hereditary hemorrhagic telangiectasia, which is characterized by harmful vascular defects, and Familial dysautonomia, are both associated with chromosome 9. Notably, chromosome 9 encompasses the largest interferon family gene cluster.</p>
Gene ID:	158326

Application Details

Application Notes:	<p>ELISA 1:500-1000</p> <p>IHC-P 1:200-400</p> <p>IHC-F 1:100-500</p> <p>IF(IHC-P) 1:50-200</p> <p>IF(IHC-F) 1:50-200</p> <p>IF(ICC) 1:50-200</p> <p>ICC 1:100-500</p>
Restrictions:	For Research Use only

Handling

Format:	Liquid
Concentration:	1 µg/µL
Buffer:	0.01M TBS(pH 7.4) with 1 % BSA, 0.02 % Proclin300 and 50 % Glycerol.
Preservative:	ProClin
Precaution of Use:	This product contains ProClin: a POISONOUS AND HAZARDOUS SUBSTANCE, which should be

Handling

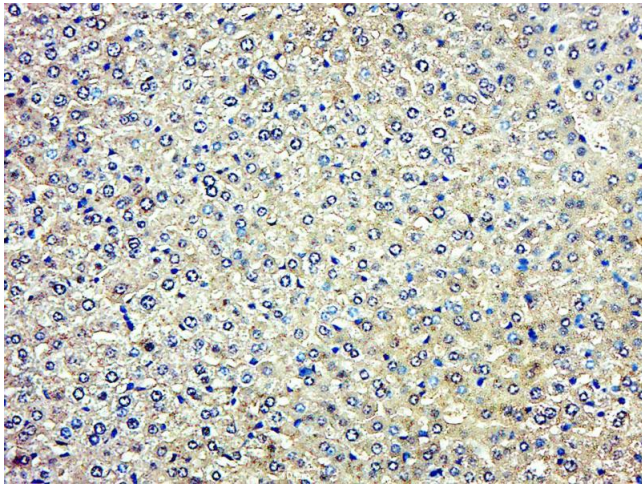
handled by trained staff only.

Storage: 4 °C,-20 °C

Storage Comment: Shipped at 4°C. Store at -20°C for one year. Avoid repeated freeze/thaw cycles.

Expiry Date: 12 months

Images



Immunohistochemistry (Paraffin-embedded Sections)

Image 1. Paraformaldehyde-fixed, paraffin embedded rat liver; Antigen retrieval by boiling in sodium citrate buffer (pH6.0) for 15min; Block endogenous peroxidase by 3% hydrogen peroxide for 20 minutes; Blocking buffer (normal goat serum) at 37°C for 30min; Antibody incubation with FREM1 Polyclonal Antibody, Unconjugated (bs-13213R) at 1:400 overnight at 4°C, followed by a conjugated secondary antibody for 20 minutes and DAB staining.