

Datasheet for ABIN1714458

anti-Golgin B1 (GOLGB1) (AA 751-850) antibody

4 Images

[Go to Product page](#)

Overview

| | |
|----------------------|--|
| Quantity: | 100 µL |
| Target: | Golgin B1 (GOLGB1) |
| Binding Specificity: | AA 751-850 |
| Reactivity: | Human, Mouse, Rat |
| Host: | Rabbit |
| Clonality: | Polyclonal |
| Conjugate: | Un-conjugated |
| Application: | Western Blotting (WB), ELISA, Flow Cytometry (FACS), Immunofluorescence (Cultured Cells) (IF (cc)), Immunofluorescence (Paraffin-embedded Sections) (IF (p)), Immunocytochemistry (ICC), Immunohistochemistry (Frozen Sections) (IHC (fro)), Immunohistochemistry (Paraffin-embedded Sections) (IHC (p)) |

Product Details

| | |
|-----------------------|--|
| Immunogen: | KLH conjugated synthetic peptide derived from human Giantin/GOLGB1 |
| Isotype: | IgG |
| Cross-Reactivity: | Human, Mouse, Rat |
| Predicted Reactivity: | Dog,Horse,Rabbit,Monkey,Hamster |
| Purification: | Purified by Protein A. |

Target Details

| | |
|---------|--------------------|
| Target: | Golgin B1 (GOLGB1) |
|---------|--------------------|

Target Details

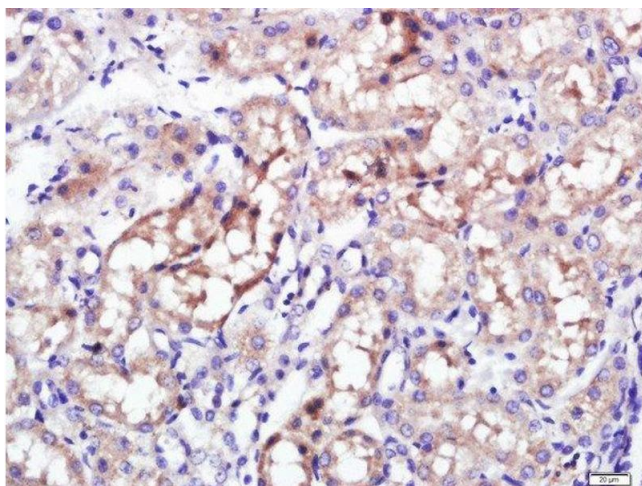
| | |
|-------------------|---|
| Alternative Name: | Giantin/GOLGB1 (GOLGB1 Products) |
| Background: | Synonyms: GCP, GCP372, GOLIM1, Golgin subfamily B member 1, 372 kDa Golgi complex-associated protein, Giantin, Macrogolgin, GOLGB1 Background: May participate in forming intercisternal cross-bridges of the Golgi complex. |
| Gene ID: | 2804 |
| UniProt: | Q14789 |
| Pathways: | SARS-CoV-2 Protein Interactome |

Application Details

| | |
|--------------------|--|
| Application Notes: | WB 1:300-5000 ELISA 1:500-1000 FCM 1:20-100 IHC-P 1:200-400 IHC-F 1:100-500 IF(IHC-P) 1:50-200 IF(IHC-F) 1:50-200 IF(ICC) 1:50-200 ICC 1:100-500 |
| Restrictions: | For Research Use only |

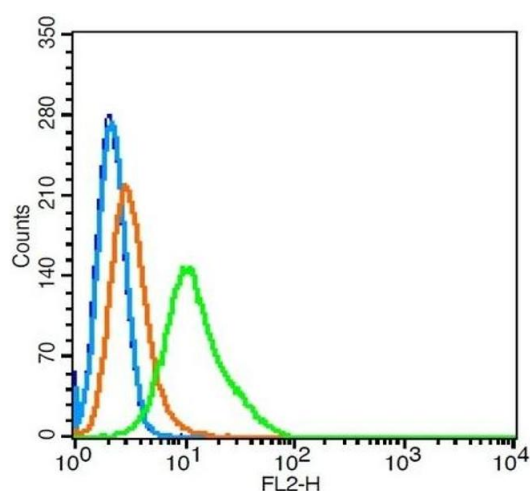
Handling

| | |
|--------------------|--|
| Format: | Liquid |
| Concentration: | 1 µg/µL |
| Buffer: | 0.01M TBS(pH 7.4) with 1 % BSA, 0.02 % Proclin300 and 50 % Glycerol. |
| Preservative: | ProClin |
| Precaution of Use: | This product contains ProClin: a POISONOUS AND HAZARDOUS SUBSTANCE, which should be handled by trained staff only. |
| Storage: | 4 °C, -20 °C |
| Storage Comment: | Shipped at 4°C. Store at -20°C for one year. Avoid repeated freeze/thaw cycles. |
| Expiry Date: | 12 months |



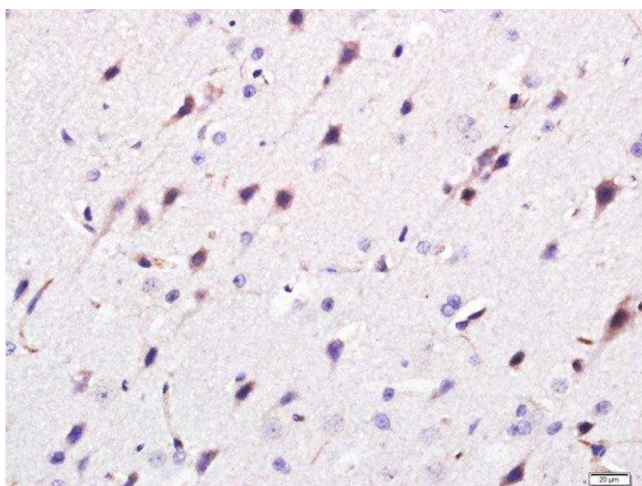
Immunohistochemistry (Paraffin-embedded Sections)

Image 1. Paraformaldehyde-fixed, paraffin embedded rat kidney, Antigen retrieval by boiling in sodium citrate buffer (pH6.0) for 15min, Block endogenous peroxidase by 3% hydrogen peroxide for 20 minutes, Blocking buffer (normal goat serum) at 37°C for 30min, Antibody incubation with Giantin Polyclonal Antibody, Unconjugated at 1:400 overnight at 4°C, followed by a conjugated secondary (sp-0023) for 20 minutes and DAB staining.



Flow Cytometry

Image 2. Hela cells probed with Giantin/GM130 Polyclonal Antibody, Unconjugated at 1:100 for 30 minutes followed by incubation with a conjugated secondary (PE Conjugated) (green) for 30 minutes compared to control cells (blue), secondary only (light blue) and isotype control (orange).



Immunohistochemistry (Paraffin-embedded Sections)

Image 3. Paraformaldehyde-fixed, paraffin embedded rat brain, Antigen retrieval by boiling in sodium citrate buffer (pH6.0) for 15min, Block endogenous peroxidase by 3% hydrogen peroxide for 20 minutes, Blocking buffer (normal goat serum) at 37°C for 30min, Antibody incubation with Giantin/GOLGB1 Polyclonal Antibody Polyclonal Antibody, Unconjugated at 1:400 overnight at 4°C, followed by a conjugated secondary (sp-0023) for 20 minutes and DAB staining.

Please check the [product details page](#) for more images. Overall 4 images are available for ABIN1714458.