

Datasheet for ABIN1714474

anti-p21 antibody (AA 21-100)**3** Images**2** Publications[Go to Product page](#)

Overview

Quantity:	100 µL
Target:	p21 (CDKN1A)
Binding Specificity:	AA 21-100
Reactivity:	Human, Mouse, Rat, Sheep
Host:	Rabbit
Clonality:	Polyclonal
Conjugate:	This p21 antibody is un-conjugated
Application:	Western Blotting (WB), ELISA, Flow Cytometry (FACS), Immunohistochemistry (Paraffin-embedded Sections) (IHC (p)), Immunofluorescence (Cultured Cells) (IF (cc)), Immunofluorescence (Paraffin-embedded Sections) (IF (p)), Immunocytochemistry (ICC), Immunohistochemistry (Frozen Sections) (IHC (fro))

Product Details

Immunogen:	KLH conjugated synthetic peptide derived from human P21
Isotype:	IgG
Cross-Reactivity:	Human, Mouse, Rat, Sheep
Predicted Reactivity:	Dog,Rabbit
Purification:	Purified by Protein A.

Target Details

Target:	p21 (CDKN1A)
---------	--------------

Target Details

Alternative Name:	P21 (CDKN1A Products)
Background:	<p>Synonyms: P21, CIP1, SDI1, WAF1, CAP2, CDKN1, MDA-6, p21CIP1, Cyclin-dependent kinase inhibitor 1, CDK-interacting protein 1, Melanoma differentiation-associated protein 6, CDKN1A, MDA6, PIC1</p> <p>Background: May be the important intermediate by which p53/TP53 mediates its role as an inhibitor of cellular proliferation in response to DNA damage. Binds to and inhibits cyclin-dependent kinase activity, preventing phosphorylation of critical cyclin-dependent kinase substrates and blocking cell cycle progression. Functions in the nuclear localization and assembly of cyclin D-CDK4 complex and promotes its kinase activity towards RB1. At higher stoichiometric ratios, inhibits the kinase activity of the cyclin D-CDK4 complex.</p>
Gene ID:	1026
UniProt:	P38936
Pathways:	p53 Signaling , PI3K-Akt Signaling , Cell Division Cycle , AMPK Signaling , Fc-epsilon Receptor Signaling Pathway , EGFR Signaling Pathway , Neurotrophin Signaling Pathway , Mitotic G1-G1/S Phases , DNA Replication , Hepatitis C , Synthesis of DNA , Autophagy

Application Details

Application Notes:	WB 1:300-5000 ELISA 1:500-1000 FCM 1:20-100 IHC-P 1:200-400 IHC-F 1:100-500 IF(IHC-P) 1:50-200 IF(IHC-F) 1:50-200 IF(ICC) 1:50-200 ICC 1:100-500
Restrictions:	For Research Use only

Handling

Format:	Liquid
Concentration:	1 µg/µL
Buffer:	0.01M TBS(pH 7.4) with 1 % BSA, 0.02 % Proclin300 and 50 % Glycerol.

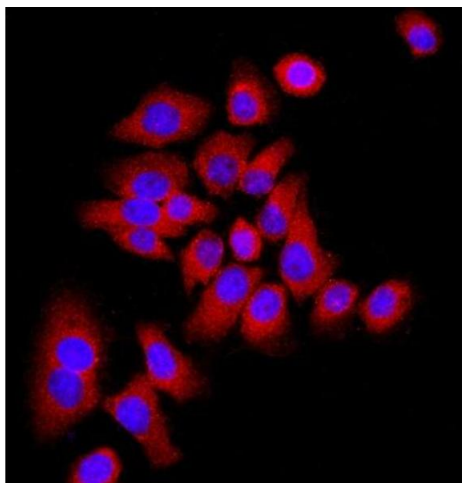
Handling

Preservative:	ProClin
Precaution of Use:	This product contains ProClin: a POISONOUS AND HAZARDOUS SUBSTANCE, which should be handled by trained staff only.
Storage:	4 °C,-20 °C
Storage Comment:	Shipped at 4°C. Store at -20°C for one year. Avoid repeated freeze/thaw cycles.
Expiry Date:	12 months

Publications

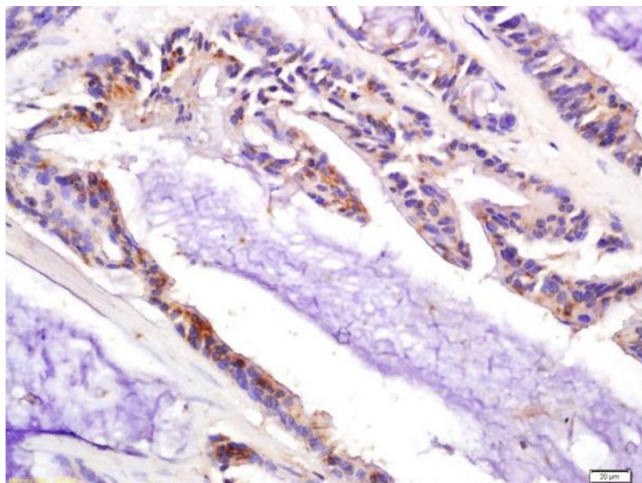
Product cited in:	<p>Wang, Cui, Wen, Guo, Zhang, Chen: "Cisplatin induces HepG2 cell cycle arrest through targeting specific long noncoding RNAs and the p53 signaling pathway." in: Oncology letters, Vol. 12, Issue 6, pp. 4605-4612, (2017) (PubMed).</p> <p>Zhang, Tan, Wang, Chen, Quan, Xian, Zhang, He, Zhang: "Musashi2 modulates K562 leukemic cell proliferation and apoptosis involving the MAPK pathway." in: Experimental cell research, Vol. 320, Issue 1, pp. 119-27, (2013) (PubMed).</p>
-------------------	---

Images



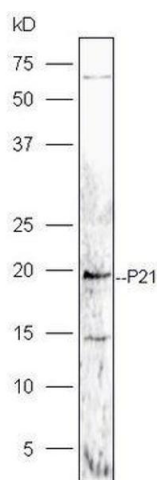
Immunofluorescence (Cultured Cells)

Image 1. MCF-7 cells were stained with P21 Polyclonal Antibody, Unconjugated at 1:500 in PBS and incubated for two hours at 37°C followed by Goat Anti-Rabbit IgG (H+L) Cy3 conjugated secondary antibody. DAPI staining of the nucleus was done and then detected.



Immunohistochemistry

Image 2. Formalin-fixed and paraffin embedded human colon carcinoma labeled with Anti-P21 Polyclonal Antibody, Unconjugated (ABIN1714474) at 1:200 followed by conjugation to the secondary antibody and DAB staining



Western Blotting

Image 3. Human MG-63 lysates probed with Rabbit Anti-P21 Polyclonal Antibody, Unconjugated at 1:5000 for 90 min at 37°C.