

Datasheet for ABIN1714480  
**anti-STRA6 antibody (AA 151-250)**[Go to Product page](#)

## 1 Image

## Overview

Quantity:	100 µL
Target:	STRA6
Binding Specificity:	AA 151-250
Reactivity:	Human
Host:	Rabbit
Clonality:	Polyclonal
Conjugate:	This STRA6 antibody is un-conjugated
Application:	ELISA, Immunofluorescence (Cultured Cells) (IF (cc)), Immunofluorescence (Paraffin-embedded Sections) (IF (p)), Immunohistochemistry (Paraffin-embedded Sections) (IHC (p)), Immunohistochemistry (Frozen Sections) (IHC (fro)), Immunocytochemistry (ICC)

## Product Details

Immunogen:	KLH conjugated synthetic peptide derived from human STRA6
Isotype:	IgG
Cross-Reactivity:	Human
Predicted Reactivity:	Mouse,Rat,Dog,Horse,Rabbit
Purification:	Purified by Protein A.

## Target Details

Target:	STRA6
---------	-------

## Target Details

Alternative Name:	STRA6 ( <a href="#">STRA6 Products</a> )
Background:	<p>Synonyms: Stimulated by retinoic acid gene 6 protein homolog, STRA6_HUMAN.</p> <p>Background: STRA6 is a 667 amino acid, multi-pass cell membrane protein. Stra6 functions as a cell-surface receptor for the complex retinol-retinol binding protein (RBP/RBP4). Ultimately increasing cellular retinol uptake from the retinol-RBP complex, Stra6 removes retinol from RBP/RBP4 and transports it across the plasma membrane, where it is metabolized. Stra6 is broadly expressed, with 4 named isoforms that exist as a result of alternative splicing events. Mutations in the gene encoding Stra6 cause Matthew-Wood Syndrome, also known as Spear Syndrome. This syndrome is characterized by anophthalmia, mild facial dysmorphism and malformations of the heart, lung and diaphragm. The Stra6 gene maps to chromosome 15q24.1.</p>
Gene ID:	64220
UniProt:	<a href="#">Q9BX79</a>
Pathways:	<a href="#">Feeding Behaviour</a>

## Application Details

Application Notes:	ELISA 1:500-1000 IHC-P 1:200-400 IHC-F 1:100-500 IF(IHC-P) 1:50-200 IF(IHC-F) 1:50-200 IF(ICC) 1:50-200 ICC 1:100-500
Restrictions:	For Research Use only

## Handling

Format:	Liquid
Concentration:	1 µg/µL
Buffer:	0.01M TBS( pH 7.4) with 1 % BSA, 0.02 % Proclin300 and 50 % Glycerol.
Preservative:	ProClin
Precaution of Use:	This product contains ProClin: a POISONOUS AND HAZARDOUS SUBSTANCE, which should be handled by trained staff only.

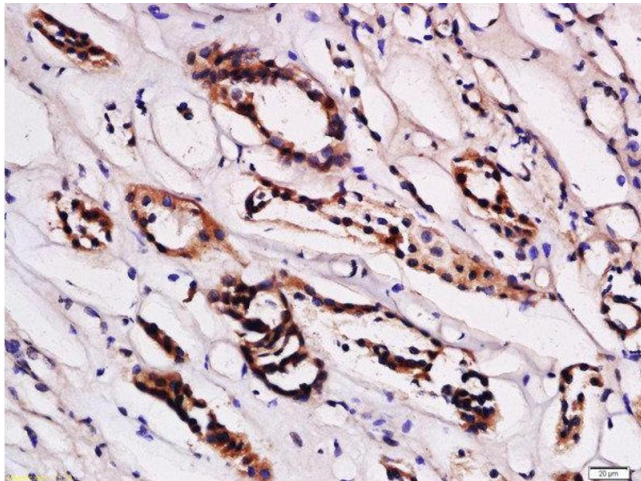
## Handling

Storage: 4 °C, -20 °C

Storage Comment: Shipped at 4°C. Store at -20°C for one year. Avoid repeated freeze/thaw cycles.

Expiry Date: 12 months

## Images



### Immunohistochemistry (Paraffin-embedded Sections)

**Image 1.** Formalin-fixed and paraffin embedded human kidney labeled with Anti-STRA6 Polyclonal Antibody, Unconjugated at 1:200 followed by conjugation to the secondary antibody and DAB staining