

Datasheet for ABIN1714490  
**anti-BAMBI antibody (AA 101-200)**

8 Images

3 Publications

[Go to Product page](#)

## Overview

Quantity:	100 µL
Target:	BAMBI
Binding Specificity:	AA 101-200
Reactivity:	Human, Rat, Mouse, Pig
Host:	Rabbit
Clonality:	Polyclonal
Conjugate:	This BAMBI antibody is un-conjugated
Application:	Western Blotting (WB), ELISA, Immunofluorescence (Cultured Cells) (IF (cc)), Immunofluorescence (Paraffin-embedded Sections) (IF (p)), Immunohistochemistry (Paraffin-embedded Sections) (IHC (p)), Immunocytochemistry (ICC), Immunohistochemistry (Frozen Sections) (IHC (fro))

## Product Details

Immunogen:	KLH conjugated synthetic peptide derived from human BAMBI
Isotype:	IgG
Cross-Reactivity:	Human, Mouse, Pig, Rat
Predicted Reactivity:	Dog,Cow,Sheep,Rabbit,Guinea Pig
Purification:	Purified by Protein A.

## Target Details

Target:	BAMBI
---------	-------

## Target Details

Alternative Name:	BAMBI ( <a href="#">BAMBI Products</a> )
Background:	<p>Synonyms: NMA, BMP and activin membrane-bound inhibitor homolog, Non-metastatic gene A protein, Putative transmembrane protein NMA, BAMBI</p> <p>Background: BAMBI is a membrane spanning glycoprotein that acts as a negative regulator of TGF-beta signaling during development. The BAMBI family of proteins are related to type I TGF-beta receptor family, however, BAMBI is a pseudoreceptor that lacks an intracellular serine/threonine kinase domain. BAMBI transcription regulation is under the influence of beta-catenin, BMP, smad3 and smad4. BAMBI expression can increase in colorectal and hepatocellular carcinomas relative to non-cancerous tissues. BAMBI is expressed at high levels during odontogenesis. BAMBI is coexpressed with Bmp-4 during early Xenopus embryogenesis and can be detected in poorly metastatic human melanoma cell lines.</p>
Gene ID:	25805
UniProt:	<a href="#">Q13145</a>

## Application Details

Application Notes:	WB 1:300-5000 ELISA 1:500-1000 IHC-P 1:200-400 IHC-F 1:100-500 IF(IHC-P) 1:50-200 IF(IHC-F) 1:50-200 IF(ICC) 1:50-200 ICC 1:100-500
Restrictions:	For Research Use only

## Handling

Format:	Liquid
Concentration:	1 µg/µL
Buffer:	0.01M TBS( pH 7.4) with 1 % BSA, 0.02 % Proclin300 and 50 % Glycerol.
Preservative:	ProClin
Precaution of Use:	This product contains ProClin: a POISONOUS AND HAZARDOUS SUBSTANCE, which should be handled by trained staff only.

Handling

Storage:	4 °C,-20 °C
Storage Comment:	Shipped at 4°C. Store at -20°C for one year. Avoid repeated freeze/thaw cycles.
Expiry Date:	12 months

Publications

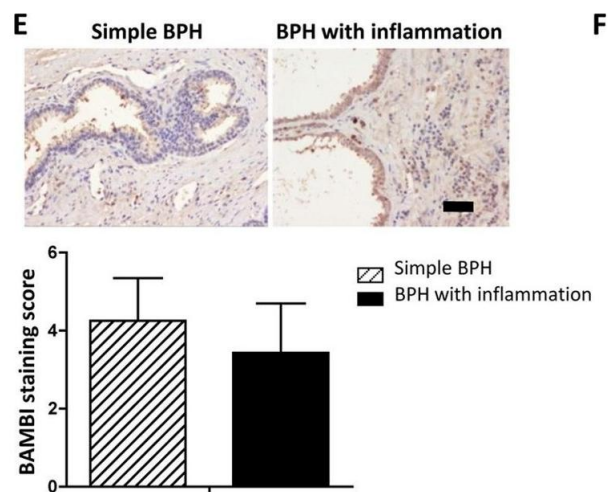
Product cited in:

He, Ou, Chen, Zu, Liu, Li, Cao, Chen, Chen, Qi, Wang: "LPS/TLR4 Signaling Enhances TGF- $\beta$  Response Through Downregulating BAMBI During Prostatic Hyperplasia." in: **Scientific reports**, Vol. 6, pp. 27051, (2016) ([PubMed](#)).

Du, Niu, Wang, Zhao, Kong, Zhang, Nan: "TLR4-dependent signaling pathway modulation: A novel mechanism by which pioglitazone protects against nutritional fibrotic steatohepatitis in mice." in: **Molecular medicine reports**, Vol. 13, Issue 3, pp. 2159-66, (2016) ([PubMed](#)).

Bai, Chu, Mai, Zheng, Wang, Zhang, Yang: "Identification and expression analyses of BAMBI mediated by FSH in swine luteinizing granulosa cells." in: **Theriogenology**, Vol. 82, Issue 8, pp. 1094-101, (2014) ([PubMed](#)).

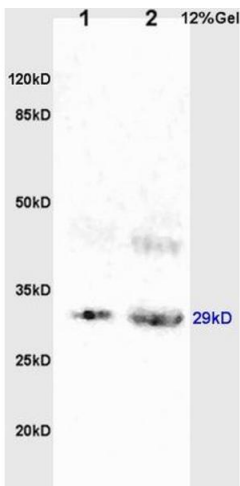
Images



**Immunohistochemistry (Paraffin-embedded Sections)**

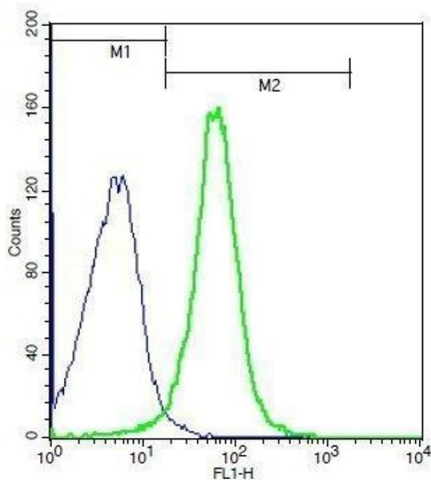
**Image 1.** Expression of TLR4, BAMBI, p-Smad2/3 in BPH patient samples. Prostate specimens obtained by TURP from patients with BPH (n=62) were stained by H&E. (A) A total of 47 of 62 patients had inflammatory cells infiltrating BPH tissues, while 15 of 62 patients had no obvious inflammatory cellular infiltration in BPH tissues. Scale bar, 100 $\mu$ m. (B) Prostatic levels of TLR4 mRNA were measured by qPCR in the inflammatory group (n=47) and non-inflammatory group (n=15). \*P<0.001. (C) Immunostaining of TLR4. TLR4 (brown staining) was expressed in the cytoplasm in the glandular epithelium cells. The mean TLR4 staining score in the inflammatory group was compared with the non-inflammatory group. Scale bar, 50 $\mu$ m.

\*P<0.001. (D) Prostatic levels of BAMBI mRNA were measured by qPCR in the inflammatory group (n=47) and non-inflammatory group (n=15). \*P<0.001. (E) BAMBI (brown staining) was expressed in the cytoplasm and several nuclei of glandular epithelium cells and some stromal cells. The mean BAMBI staining score in the inflammatory group was compared with non-inflammatory group. Scale bar, 50µm. P=0.095. (F) P-Smad2/3 was expressed in the nuclei of glandular epithelial cells but not in the basal cells. The mean p-Smad2/3 staining score in the inflammatory group was compared with non-inflammatory group. Scale bar, 50µm. \*P<0.001, determined by Wilcoxon rank sum test. - figure provided by CiteAb. Source: PMID27243216



SDS-PAGE

**Image 2.** L1 rat brain lysates L2 rat kidney lysates probed with Anti BAMBI Polyclonal Antibody, Unconjugated (ABIN1714490) at 1:200 overnight at 4 °C. Followed by conjugation to secondary antibody at 1:3000 for 90 min at 37 °C. Predicted band 29kD. Observed band size:29kD.



Flow Cytometry

**Image 3.** Mouse splenocytes probed with Rabbit Anti-BAMBI Polyclonal Antibody, Unconjugated .

Please check the [product details page](#) for more images. Overall 8 images are available for ABIN1714490.