

Datasheet for ABIN1714536
anti-FLNB antibody (AA 1551-1650)[Go to Product page](#)

2 Images

Overview

Quantity:	100 µL
Target:	FLNB
Binding Specificity:	AA 1551-1650
Reactivity:	Human
Host:	Rabbit
Clonality:	Polyclonal
Conjugate:	This FLNB antibody is un-conjugated
Application:	Western Blotting (WB), ELISA, Immunofluorescence (Cultured Cells) (IF (cc)), Immunofluorescence (Paraffin-embedded Sections) (IF (p)), Immunohistochemistry (Paraffin-embedded Sections) (IHC (p)), Immunocytochemistry (ICC), Immunohistochemistry (Frozen Sections) (IHC (fro))

Product Details

Immunogen:	KLH conjugated synthetic peptide derived from human FLNB/Filamin 3
Isotype:	IgG
Cross-Reactivity:	Human
Predicted Reactivity:	Mouse,Rat,Dog,Cow,Sheep,Rabbit
Purification:	Purified by Protein A.

Target Details

Target:	FLNB
---------	------

Target Details

Alternative Name:	FLNB/Filamin 3 (FLNB Products)
Background:	<p>Synonyms: ABP 278, ABP 280 homolog, ABP-278, ABP-280 homolog, ABP278, Actin binding like protein, Actin binding protein 278, Actin-binding-like protein, AOI, Beta filamin, Beta-filamin, DKFZp686A1668, DKFZp686O033, Fh1, Filamin 1 actin binding protein 280 like, Filamin 3, Filamin B, Filamin B beta actin binding protein 278, Filamin homolog 1, Filamin-3, Filamin-B, FLN B, FLN-B, FLN1L, FLN3, FLNB, FLNB_HUMAN, LRS1, SCT, TABP, TAP, Thyroid autoantigen, Truncated ABP, Truncated actin binding protein, Truncated actin-binding protein.</p> <p>Background: This gene encodes a member of the filamin family. The encoded protein interacts with glycoprotein Ib alpha as part of the process to repair vascular injuries. The platelet glycoprotein Ib complex includes glycoprotein Ib alpha, and it binds the actin cytoskeleton. Mutations in this gene have been found in several conditions: atelosteogenesis type 1 and type 3, boomerang dysplasia, autosomal dominant Larsen syndrome, and spondylocarpotarsal synostosis syndrome. Multiple alternatively spliced transcript variants that encode different protein isoforms have been described for this gene. [provided by RefSeq, Nov 2009].</p>
Gene ID:	2317
Pathways:	Maintenance of Protein Location

Application Details

Application Notes:	WB 1:300-5000 ELISA 1:500-1000 IHC-P 1:200-400 IHC-F 1:100-500 IF(IHC-P) 1:50-200 IF(IHC-F) 1:50-200 IF(ICC) 1:50-200 ICC 1:100-500
Restrictions:	For Research Use only

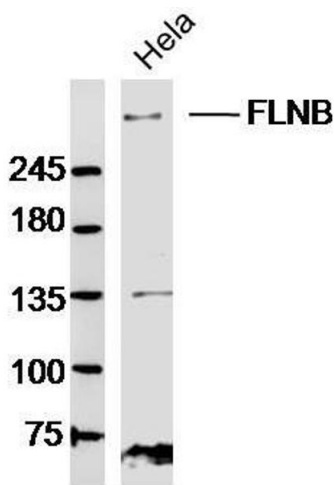
Handling

Format:	Liquid
Concentration:	1 µg/µL
Buffer:	0.01M TBS(pH 7.4) with 1 % BSA, 0.02 % Proclin300 and 50 % Glycerol.

Handling

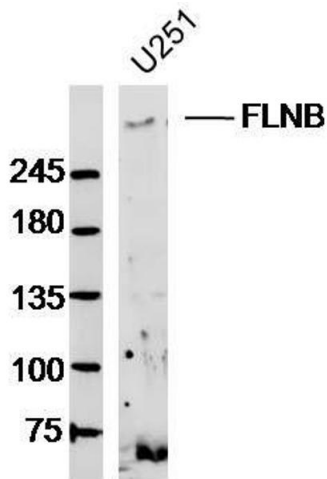
Preservative:	ProClin
Precaution of Use:	This product contains ProClin: a POISONOUS AND HAZARDOUS SUBSTANCE, which should be handled by trained staff only.
Storage:	4 °C,-20 °C
Storage Comment:	Shipped at 4°C. Store at -20°C for one year. Avoid repeated freeze/thaw cycles.
Expiry Date:	12 months

Images



Western Blotting

Image 1. HeLa lysates probed with FLNB Polyclonal Antibody, Unconjugated at 1:300 dilution and 4°C overnight incubation. Followed by conjugated secondary antibody incubation at 1:10000 for 60 min at 37°C.



Western Blotting

Image 2. U251 lysates probed with FLNB Polyclonal Antibody, Unconjugated at 1:300 dilution and 4°C overnight incubation. Followed by conjugated secondary antibody incubation at 1:10000 for 60 min at 37°C.