



[Go to Product page](#)

Datasheet for ABIN1714548
anti-GIPC1 antibody (AA 101-160)

1 Image

Overview

Quantity:	100 µL
Target:	GIPC1
Binding Specificity:	AA 101-160
Reactivity:	Human
Host:	Rabbit
Clonality:	Polyclonal
Conjugate:	This GIPC1 antibody is un-conjugated
Application:	ELISA, Immunofluorescence (Cultured Cells) (IF (cc)), Immunofluorescence (Paraffin-embedded Sections) (IF (p)), Immunohistochemistry (Paraffin-embedded Sections) (IHC (p)), Immunohistochemistry (Frozen Sections) (IHC (fro)), Immunocytochemistry (ICC)

Product Details

Immunogen:	KLH conjugated synthetic peptide derived from human GIPC1
Isotype:	IgG
Cross-Reactivity:	Human
Predicted Reactivity:	Mouse,Rat,Dog,Cow,Sheep
Purification:	Purified by Protein A.

Target Details

Target:	GIPC1
---------	-------

Target Details

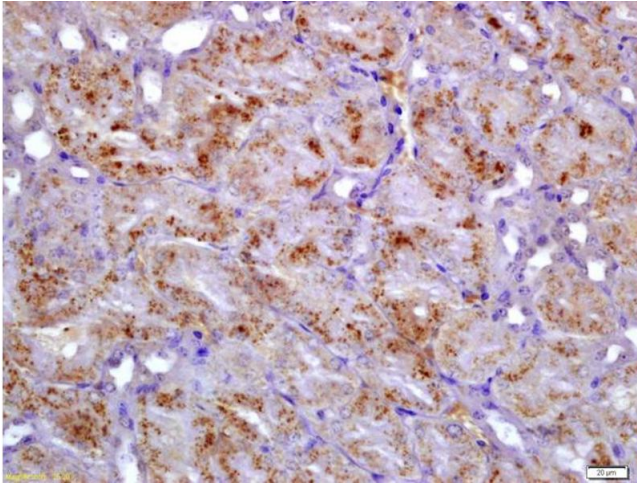
Alternative Name:	GIPC1 (GIPC1 Products)
Background:	Synonyms: NIP, GIPC, IIP-1, TIP-2, SEMCAP, C19orf3, Hs.6454, GLUT1CBP, RGS19IP1, SYNECTIN, SYNECTIIN, PDZ domain-containing protein GIPC1, GAIP C-terminus-interacting protein, RGS-GAIP-interacting protein, RGS19-interacting protein 1, Tax interaction protein 2, GIPC1 Background: May be involved in G protein-linked signaling.
Gene ID:	10755
UniProt:	O14908
Pathways:	Dicarboxylic Acid Transport

Application Details

Application Notes:	ELISA 1:500-1000 IHC-P 1:200-400 IHC-F 1:100-500 IF(IHC-P) 1:50-200 IF(IHC-F) 1:50-200 IF(ICC) 1:50-200 ICC 1:100-500
Restrictions:	For Research Use only

Handling

Format:	Liquid
Concentration:	1 µg/µL
Buffer:	0.01M TBS(pH 7.4) with 1 % BSA, 0.02 % Proclin300 and 50 % Glycerol.
Preservative:	ProClin
Precaution of Use:	This product contains ProClin: a POISONOUS AND HAZARDOUS SUBSTANCE, which should be handled by trained staff only.
Storage:	4 °C, -20 °C
Storage Comment:	Shipped at 4°C. Store at -20°C for one year. Avoid repeated freeze/thaw cycles.
Expiry Date:	12 months



Immunohistochemistry

Image 1. Formalin-fixed and paraffin embedded mouse kidney labeled with Anti-GIPC1 Polyclonal Antibody, Unconjugated (ABIN1714548) at 1:200 followed by conjugation to the secondary antibody and DAB staining