



Datasheet for ABIN1714564
anti-LTB antibody (AA 171-244)



[Go to Product page](#)

2 Images

Overview

Quantity:	100 µL
Target:	LTB
Binding Specificity:	AA 171-244
Reactivity:	Human
Host:	Rabbit
Clonality:	Polyclonal
Conjugate:	This LTB antibody is un-conjugated
Application:	Western Blotting (WB), ELISA

Product Details

Immunogen:	KLH conjugated synthetic peptide derived from human Lymphotoxin Beta
Isotype:	IgG
Cross-Reactivity:	Human
Predicted Reactivity:	Mouse,Rat,Dog,Cow,Horse,Rabbit
Purification:	Purified by Protein A.

Target Details

Target:	LTB
Alternative Name:	Lymphotoxin Beta (LTB Products)
Background:	Synonyms: LT beta, LT-beta, LTB, lymphotoxin beta TNF superfamily, member 3, lymphotoxin

Target Details

beta, lymphotoxin-beta, OTTHUMP00000038214, p33, TNF C, TNF-C, TNFC, TNFC_HUMAN, TNFSF3, tumor necrosis factor C lymphotoxin beta, tumor necrosis factor C, tumor necrosis factor ligand superfamily member 3.

Background: Lymphotoxin beta is a type II membrane protein of the TNF family. It anchors lymphotoxin-alpha to the cell surface through heterotrimer formation. The predominant form on the lymphocyte surface is the lymphotoxin-alpha 1/beta 2 complex and this complex is the primary ligand for the lymphotoxin-beta receptor. LTB is an inducer of the inflammatory response system and involved in normal development of lymphoid tissue. Lymphotoxin-beta isoform b is probably non-functional. Alternative splicing results in multiple transcript variants encoding different isoforms.

Gene ID: 4050

UniProt: [Q06643](#)

Pathways: [NF-kappaB Signaling](#)

Application Details

Application Notes: WB 1:300-5000
ELISA 1:500-1000

Restrictions: For Research Use only

Handling

Format: Liquid

Concentration: 1 µg/µL

Buffer: 0.01M TBS (pH 7.4) with 1 % BSA, 0.02 % Proclin300 and 50 % Glycerol.

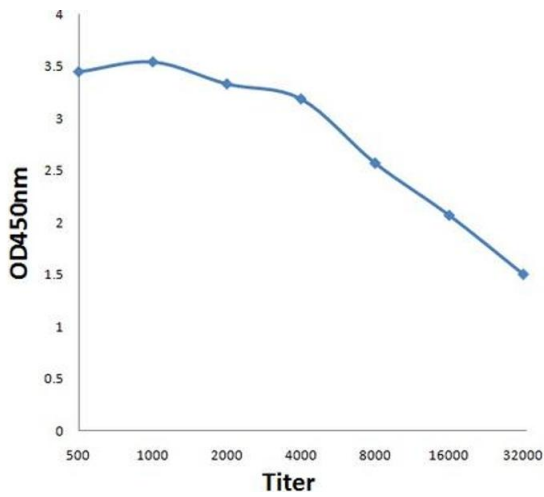
Preservative: ProClin

Precaution of Use: This product contains ProClin: a POISONOUS AND HAZARDOUS SUBSTANCE, which should be handled by trained staff only.

Storage: 4 °C, -20 °C

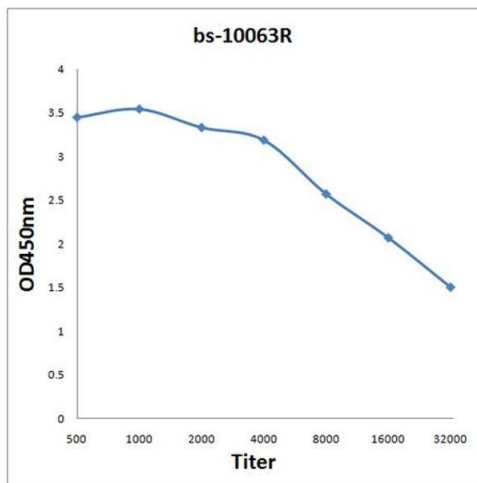
Storage Comment: Shipped at 4°C. Store at -20°C for one year. Avoid repeated freeze/thaw cycles.

Expiry Date: 12 months



ELISA

Image 1. Antigen: 0.2ug/100ul, Primary: Antiserum, 1:500, 1:1000, 1:2000, 1:4000, 1:8000, 1:16000, 1:32000, Secondary: HRP conjugated Goat-Anti-Rabbit IgG at 1: 5000, TMB staining, Read the data in MicroplateReader by 450nm



ELISA

Image 2. Antigen: 0.2 µg/100 µL Primary: Antiserum, 1:500, 1:1000, 1:2000, 1:4000, 1:8000, 1:16000, 1:32000; Secondary: HRP conjugated Goat-Anti-Rabbit IgG at 1: 5000; TMB staining; Read the data in MicroplateReader by 450