

Datasheet for ABIN1714616
anti-FOXRED1 antibody (AA 251-350)[Go to Product page](#)

1 Image

Overview

Quantity:	100 µL
Target:	FOXRED1
Binding Specificity:	AA 251-350
Reactivity:	Mouse, Rat
Host:	Rabbit
Clonality:	Polyclonal
Conjugate:	This FOXRED1 antibody is un-conjugated
Application:	Western Blotting (WB), ELISA, Immunofluorescence (Cultured Cells) (IF (cc)), Immunofluorescence (Paraffin-embedded Sections) (IF (p)), Immunohistochemistry (Paraffin- embedded Sections) (IHC (p)), Immunohistochemistry (Frozen Sections) (IHC (fro)), Immunocytochemistry (ICC)

Product Details

Immunogen:	KLH conjugated synthetic peptide derived from human FOXRED1
Isotype:	IgG
Cross-Reactivity:	Mouse, Rat
Predicted Reactivity:	Human,Dog,Pig,Horse,Rabbit
Purification:	Purified by Protein A.

Target Details

Target:	FOXRED1
---------	---------

Target Details

Alternative Name:	FOXRED1 (FOXRED1 Products)
Background:	<p>Synonyms: FAD dependent oxidoreductase domain containing 1, FAD dependent oxidoreductase domain containing protein 1, FAD-dependent oxidoreductase domain-containing protein 1, FOXRED 1, FOXRED1, FP634, FXRD1_HUMAN, H17.</p> <p>Background: FOXRED1 is a 486 amino acid single-pass membrane protein. Utilizing FAD as a cofactor, FOXRED1 may act as a chaperone protein essential for the function of mitochondrial complex I. Mutations to FOXRED1 may result in mitochondrial complex I deficiency (MT-C1D), which results in a wide range of clinical maladies from lethal neonatal disease to adult onset neurodegenerative disorders. Common phenotypes of MT-C1D include cardiomyopathy, liver disease, Leigh syndrome, Leber hereditary optic neuropathy, and some forms of Parkinson disease. FOXRED1 exists as three alternatively spliced isoforms and is encoded by a gene mapping to human chromosome 11q24.2. With approximately 135 million base pairs and 1,400 genes, chromosome 11 makes up around 4 % of human genomic DNA and is considered a gene and disease association dense chromosome.</p>
Gene ID:	55572

Application Details

Application Notes:	WB 1:300-5000 ELISA 1:500-1000 IHC-P 1:200-400 IHC-F 1:100-500 IF(IHC-P) 1:50-200 IF(IHC-F) 1:50-200 IF(ICC) 1:50-200 ICC 1:100-500
Restrictions:	For Research Use only

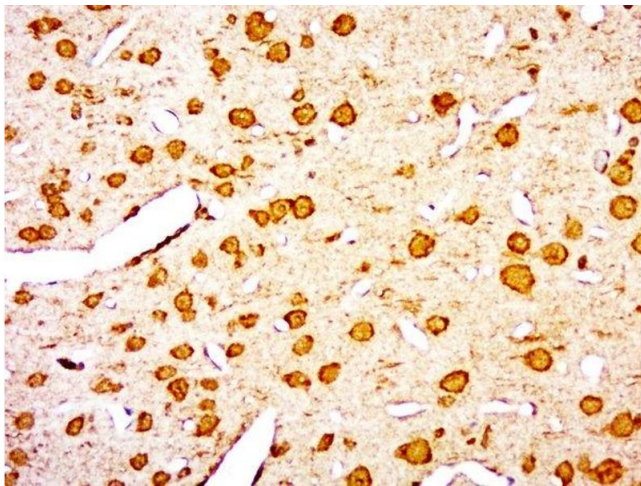
Handling

Format:	Liquid
Concentration:	1 µg/µL
Buffer:	0.01M TBS(pH 7.4) with 1 % BSA, 0.02 % Proclin300 and 50 % Glycerol.
Preservative:	ProClin

Handling

Precaution of Use:	This product contains ProClin: a POISONOUS AND HAZARDOUS SUBSTANCE, which should be handled by trained staff only.
Storage:	4 °C,-20 °C
Storage Comment:	Shipped at 4°C. Store at -20°C for one year. Avoid repeated freeze/thaw cycles.
Expiry Date:	12 months

Images



Immunohistochemistry (Paraffin-embedded Sections)

Image 1. Paraformaldehyde-fixed, paraffin embedded rat brain, Antigen retrieval by boiling in sodium citrate buffer (pH6.0) for 15min, Block endogenous peroxidase by 3% hydrogen peroxide for 20 minutes, Blocking buffer (normal goat serum) at 37°C for 30min, Antibody incubation with FOXRED1 Polyclonal Antibody, Unconjugated at 1:400 overnight at 4°C, followed by a conjugated secondary for 20 minutes and DAB staining.