

Datasheet for ABIN1714633
anti-THEMIS antibody (AA 301-400)

3 Images

[Go to Product page](#)

Overview

Quantity:	100 µL
Target:	THEMIS
Binding Specificity:	AA 301-400
Reactivity:	Human, Rat
Host:	Rabbit
Clonality:	Polyclonal
Conjugate:	This THEMIS antibody is un-conjugated
Application:	Western Blotting (WB), ELISA, Immunofluorescence (Cultured Cells) (IF (cc)), Immunofluorescence (Paraffin-embedded Sections) (IF (p)), Immunohistochemistry (Paraffin- embedded Sections) (IHC (p)), Immunohistochemistry (Frozen Sections) (IHC (fro)), Immunocytochemistry (ICC)

Product Details

Immunogen:	KLH conjugated synthetic peptide derived from human THEMIS
Isotype:	IgG
Cross-Reactivity:	Human, Rat
Predicted Reactivity:	Mouse,Dog,Pig,Horse,Rabbit
Purification:	Purified by Protein A.

Target Details

Target:	THEMIS
---------	--------

Target Details

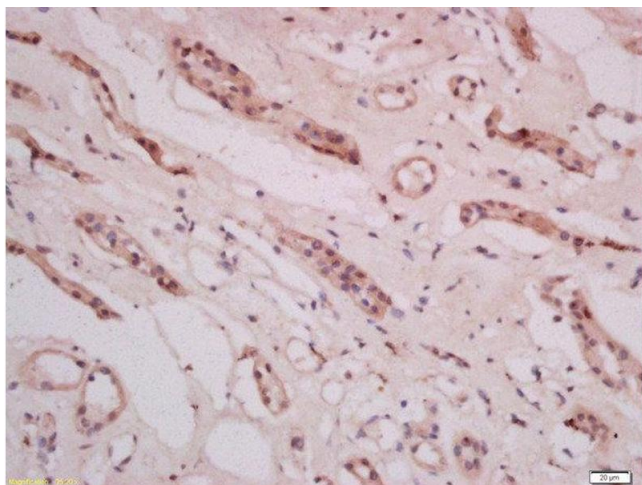
Alternative Name:	THEMIS (THEMIS Products)
Background:	<p>Synonyms: GASP, SPOT, TSEPA, C6orf190, C6orf207, bA325024.3, bA325024.4, Protein THEMIS, Thymocyte-expressed molecule involved in selection, THEMIS</p> <p>Background: Plays a central role in late thymocyte development by controlling both positive and negative T-cell selection. Required to sustain and/or integrate signals required for proper lineage commitment and maturation of T-cells. Regulates T-cell development through T-cell antigen receptor (TCR) signaling and in particular through the regulation of calcium influx and phosphorylation of Erk (By similarity).</p>
Gene ID:	387357
UniProt:	Q8N1K5

Application Details

Application Notes:	<p>WB 1:300-5000</p> <p>ELISA 1:500-1000</p> <p>IHC-P 1:200-400</p> <p>IHC-F 1:100-500</p> <p>IF(IHC-P) 1:50-200</p> <p>IF(IHC-F) 1:50-200</p> <p>IF(ICC) 1:50-200</p> <p>ICC 1:100-500</p>
Restrictions:	For Research Use only

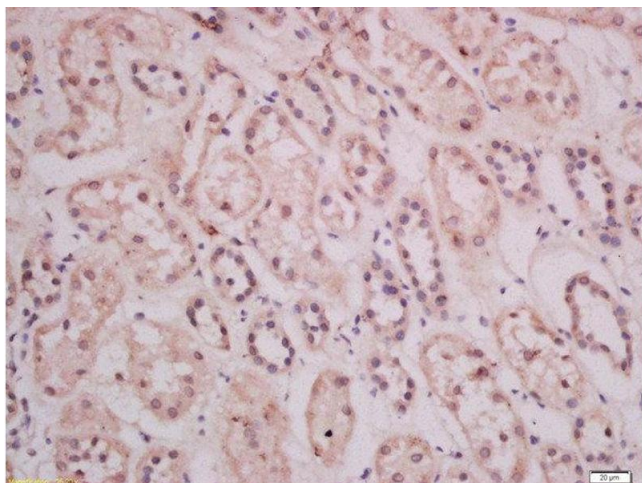
Handling

Format:	Liquid
Concentration:	1 µg/µL
Buffer:	0.01M TBS(pH 7.4) with 1 % BSA, 0.02 % Proclin300 and 50 % Glycerol.
Preservative:	ProClin
Precaution of Use:	This product contains ProClin: a POISONOUS AND HAZARDOUS SUBSTANCE, which should be handled by trained staff only.
Storage:	4 °C,-20 °C
Storage Comment:	Shipped at 4°C. Store at -20°C for one year. Avoid repeated freeze/thaw cycles.



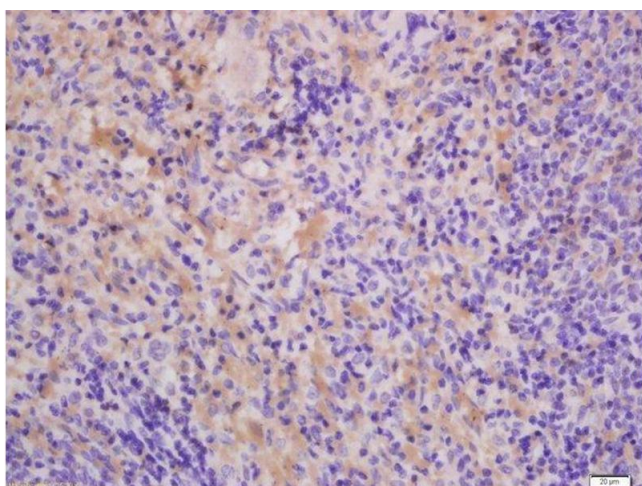
Immunohistochemistry (Paraffin-embedded Sections)

Image 1. Formalin-fixed and paraffin embedded human kidney tissue labeled with Anti-THEMIS Polyclonal Antibody, Unconjugated 1:400 followed by conjugation to the secondary antibody and DAB staining



Immunohistochemistry (Paraffin-embedded Sections)

Image 2. Formalin-fixed and paraffin embedded human kidney tissue labeled with Anti-THEMIS Polyclonal Antibody, Unconjugated 1:400 followed by conjugation to the secondary antibody and DAB staining



Immunohistochemistry (Paraffin-embedded Sections)

Image 3. Formalin-fixed and paraffin embedded Rat lung spleen labeled with Anti-THEMIS Polyclonal Antibody, Unconjugated at 1:300, followed by conjugation to the secondary antibody and DAB staining.