

Datasheet for ABIN1714636
anti-S100A6 antibody (AA 15-70)

2 Images

[Go to Product page](#)

Overview

Quantity:	100 µL
Target:	S100A6
Binding Specificity:	AA 15-70
Reactivity:	Human, Mouse
Host:	Rabbit
Clonality:	Polyclonal
Conjugate:	This S100A6 antibody is un-conjugated
Application:	ELISA, Immunocytochemistry (ICC), Immunohistochemistry (Paraffin-embedded Sections) (IHC (p)), Immunohistochemistry (Frozen Sections) (IHC (fro)), Immunofluorescence (Cultured Cells) (IF (cc)), Immunofluorescence (Paraffin-embedded Sections) (IF (p))

Product Details

Immunogen:	KLH conjugated synthetic peptide derived from human S100A6
Isotype:	IgG
Cross-Reactivity:	Human, Mouse
Predicted Reactivity:	Rat,Dog,Pig,Horse,Rabbit
Purification:	Purified by Protein A.

Target Details

Target:	S100A6
---------	--------

Target Details

Alternative Name:	S100A6 (S100A6 Products)
Background:	<p>Synonyms: S100 alpha 6 PRA, Calcyclin, PRAGrowth factor inducible protein 2A9, Prolactin receptor associated protein, Prolactin receptor-associated protein, Protein S100 A6, Protein S100-A6, S100 A6, S100 calcium binding protein A6 calcyclin, S100 calcium binding protein A6, S100 calcium-binding protein A6, S100A6, S100A6_HUMAN, S100-A6, 2A9, 5B10, CABP, CACY, Calcyclin, Growth factor inducible protein 2A9, Growth factor-inducible protein 2A9, MLN 4, MLN4.</p> <p>Background: Calcyclin, also known as Protein S100-A6, growth factor-inducible protein 2A9, S-100 calcium-binding protein A6 (S-100A6) or MLN 4, is a homodimeric member of the S-100 calcium-binding protein family whose expression is upregulated in proliferating and differentiating cells. Calcyclin is inducible by growth factors and overexpressed in acute myeloid leukemias. It is expressed in a cell-specific manner in subpopulations of neurons and astrocytes and in epithelial cells and fibroblasts. Calcyclin is a specific target of S-100B protein in vivo. The binding of Calcyclin to S-100B is stabilized by S-100B-bound calcium and zinc. Calcyclin associates with both Annexin XI and CacyBP (calcyclin-binding protein). It functions to activate several processes along the calcium signal transduction pathway including the regulation of cell growth, proliferation, secretion and exocytosis.</p>
Gene ID:	10014
Pathways:	S100 Proteins

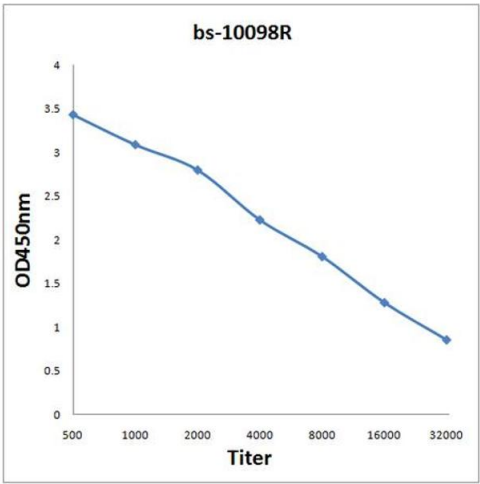
Application Details

Application Notes:	ELISA 1:500-1000 IHC-P 1:200-400 IHC-F 1:100-500 IF(IHC-P) 1:50-200 IF(IHC-F) 1:50-200 IF(ICC) 1:50-200 ICC 1:100-500
Restrictions:	For Research Use only
Handling	
Format:	Liquid
Concentration:	1 µg/µL

Handling

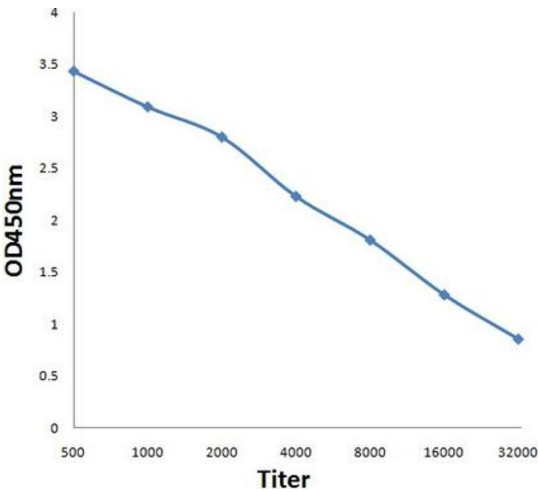
Buffer:	0.01M TBS(pH 7.4) with 1 % BSA, 0.02 % Proclin300 and 50 % Glycerol.
Preservative:	ProClin
Precaution of Use:	This product contains ProClin: a POISONOUS AND HAZARDOUS SUBSTANCE, which should be handled by trained staff only.
Storage:	4 °C,-20 °C
Storage Comment:	Shipped at 4°C. Store at -20°C for one year. Avoid repeated freeze/thaw cycles.
Expiry Date:	12 months

Images



ELISA

Image 1. Antigen: 0.2 µg/100 µL Primary: Antiserum, 1:500, 1:1000, 1:2000, 1:4000, 1:8000, 1:16000, 1:32000; Secondary: HRP conjugated Goat-Anti-Rabbit IgG at 1: 5000; TMB staining; Read the data in MicroplateReader by 450



ELISA

Image 2. Antigen: 0.2ug/100ul, Primary: Antiserum, 1:500, 1:1000, 1:2000, 1:4000, 1:8000, 1:16000, 1:32000, Secondary: HRP conjugated Goat-Anti-Rabbit IgG at 1: 5000, TMB staining, Read the data in MicroplateReader by 450nm