

Datasheet for ABIN1714714

**anti-Complement Component C9b (C9b) (AA 251-350)
antibody**[Go to Product page](#)

2 Images

1 Publication

Overview

Quantity:	100 µL
Target:	Complement Component C9b (C9b)
Binding Specificity:	AA 251-350
Reactivity:	Human, Mouse
Host:	Rabbit
Clonality:	Polyclonal
Conjugate:	Un-conjugated
Application:	Western Blotting (WB), Flow Cytometry (FACS), Immunohistochemistry (Paraffin-embedded Sections) (IHC (p)), ELISA

Product Details

Immunogen:	KLH conjugated synthetic peptide derived from human Complement component C9b
Isotype:	IgG
Cross-Reactivity:	Human, Mouse
Predicted Reactivity:	Rat,Dog,Cow,Sheep,Pig
Purification:	Purified by Protein A.

Target Details

Target:	Complement Component C9b (C9b)
Alternative Name:	Complement component C9b (C9b Products)

Target Details

Background:	<p>Synonyms: C09_HUMAN, Complement component C9, Complementcomponent C9b.</p> <p>Background: C9 is a plasma protein synthesized in the liver and monocytes consisting of a single polypeptide chain. C9 is a part of the membrane attack complex (MAC), an important component of the immune system. The MAC forms upon complement system activation by invading pathogenic bacteria and consists of the four major complement proteins: C5b, C6, C7 and C8. These complement proteins bind to the outer surface of the plasma membrane of the invading cell. C9 binds to the membrane associated C5b-8 protein, which leads to the circular polymerization of 12-18 C9 Molecules. These polymerized C9 Molecules form a ring structure in the membrane. Molecules can then diffuse freely through this transmembrane channel, causing cell lysis and destruction of the invading bacterial cell.</p>
Gene ID:	735

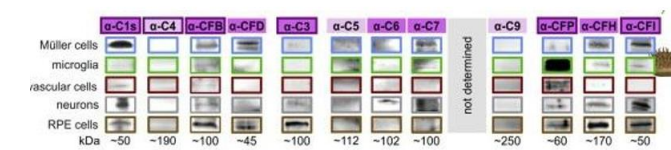
Application Details

Application Notes:	<p>WB 1:300-5000</p> <p>ELISA 1:500-1000</p> <p>FCM 1:20-100</p> <p>IHC-P 1:200-400</p>
Restrictions:	For Research Use only

Handling

Format:	Liquid
Concentration:	1 µg/µL
Buffer:	0.01M TBS(pH 7.4) with 1 % BSA, 0.02 % Proclin300 and 50 % Glycerol.
Preservative:	ProClin
Precaution of Use:	This product contains ProClin: a POISONOUS AND HAZARDOUS SUBSTANCE, which should be handled by trained staff only.
Storage:	4 °C,-20 °C
Storage Comment:	Shipped at 4°C. Store at -20°C for one year. Avoid repeated freeze/thaw cycles.
Expiry Date:	12 months

Product cited in: Pauly, Agarwal, Dana, Schäfer, Biber, Wunderlich, Jabri, Straub, Zhang, Gautam, Weber, Hauck, Kim, Curcio, Stambolian, Li, Grosche: "Cell-Type-Specific Complement Expression in the Healthy and Diseased Retina." in: **Cell reports**, Vol. 29, Issue 9, pp. 2835-2848.e4, (2019) ([PubMed](#)).



Western Blotting

Image 1. Expression levels of indicated complement components were determined from cells of albino mice at mRNA (bars, 8-week-old mice) and at protein level (western blot, 8- to 24-week -old mice). The overall contribution of each cell population to the local complement homeostasis was determined by analyzing the total yield of mRNA or protein derived from the respective cell population so that both are reflected by the data (expression level per cell type and the number of cells per cell type present in the retina). Source: PMID21646469

Immunohistochemistry (Paraffin-embedded Sections)

Image 2. Paraformaldehyde-fixed, paraffin embedded Mouse liver, Antigen retrieval by boiling in sodium citrate buffer (pH6.0) for 15min, Block endogenous peroxidase by 3% hydrogen peroxide for 20 minutes, Blocking buffer (normal goat serum) at 37°C for 30min, Antibody incubation with C9b/C9 Polyclonal Antibody, Unconjugated at 1:400 overnight at 4°C, followed by a conjugated secondary and DAB staining.

