



[Go to Product page](#)

Datasheet for ABIN1714715  
**anti-COX6C antibody (AA 21-75)**

1 Image

Overview

Quantity:	100 µL
Target:	COX6C
Binding Specificity:	AA 21-75
Reactivity:	Human, Mouse
Host:	Rabbit
Clonality:	Polyclonal
Conjugate:	This COX6C antibody is un-conjugated
Application:	Western Blotting (WB), ELISA, Immunofluorescence (Cultured Cells) (IF (cc)), Immunofluorescence (Paraffin-embedded Sections) (IF (p)), Immunohistochemistry (Paraffin-embedded Sections) (IHC (p)), Immunocytochemistry (ICC), Immunohistochemistry (Frozen Sections) (IHC (fro))

Product Details

Immunogen:	KLH conjugated synthetic peptide derived from human COX6c/Cytochrome C Oxidase subunit VIc
Isotype:	IgG
Cross-Reactivity:	Human, Mouse
Predicted Reactivity:	Rat,Dog,Cow,Sheep,Pig,Horse,Rabbit
Purification:	Purified by Protein A.

## Target Details

---

Target:	COX6C
Alternative Name:	COX6c/Cytochrome C Oxidase subunit VIc ( <a href="#">COX6C Products</a> )
Background:	Synonyms: Cytochrome c oxidase subunit 6C, Cytochrome c oxidase polypeptide VIc, COX6C Background: This protein is one of the nuclear-coded polypeptide chains of cytochrome c oxidase, the terminal oxidase in mitochondrial electron transport.
Gene ID:	1345
UniProt:	<a href="#">P09669</a>
Pathways:	<a href="#">Proton Transport</a>

## Application Details

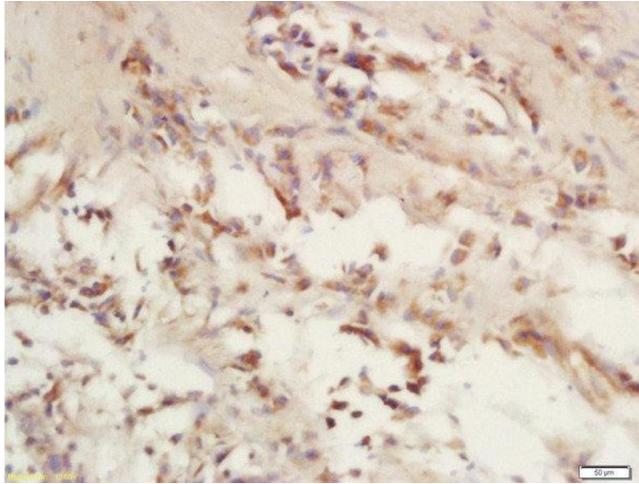
---

Application Notes:	WB 1:300-5000 ELISA 1:500-1000 IHC-P 1:200-400 IHC-F 1:100-500 IF(IHC-P) 1:50-200 IF(IHC-F) 1:50-200 IF(ICC) 1:50-200 ICC 1:100-500
Restrictions:	For Research Use only

## Handling

---

Format:	Liquid
Concentration:	1 µg/µL
Buffer:	0.01M TBS( pH 7.4) with 1 % BSA, 0.02 % Proclin300 and 50 % Glycerol.
Preservative:	ProClin
Precaution of Use:	This product contains ProClin: a POISONOUS AND HAZARDOUS SUBSTANCE, which should be handled by trained staff only.
Storage:	4 °C, -20 °C
Storage Comment:	Shipped at 4°C. Store at -20°C for one year. Avoid repeated freeze/thaw cycles.
Expiry Date:	12 months



#### Immunohistochemistry (Paraffin-embedded Sections)

**Image 1.** Formalin-fixed and paraffin embedded human laryngeal carcinoma labeled with Rabbit Anti-COX6c/Cytochrome C Oxidase subunit VIc Polyclonal Antibody, Unconjugated (ABIN1714715) at 1:200 followed by conjugation to the secondary antibody and DAB staining