

Datasheet for ABIN1714740
anti-ENPP6 antibody (AA 251-350)[Go to Product page](#)

1 Image

Overview

| | |
|----------------------|---|
| Quantity: | 100 µL |
| Target: | ENPP6 |
| Binding Specificity: | AA 251-350 |
| Reactivity: | Human, Mouse, Rat |
| Host: | Rabbit |
| Clonality: | Polyclonal |
| Conjugate: | This ENPP6 antibody is un-conjugated |
| Application: | ELISA, Western Blotting (WB), Immunofluorescence (Paraffin-embedded Sections) (IF (p)), Immunofluorescence (Cultured Cells) (IF (cc)), Immunohistochemistry (Paraffin-embedded Sections) (IHC (p)), Immunohistochemistry (Frozen Sections) (IHC (fro)), Immunocytochemistry (ICC) |

Product Details

| | |
|-----------------------|---|
| Immunogen: | KLH conjugated synthetic peptide derived from human ENPP6 |
| Isotype: | IgG |
| Cross-Reactivity: | Human, Mouse, Rat |
| Predicted Reactivity: | Dog,Cow,Pig,Horse |
| Purification: | Purified by Protein A. |

Target Details

| | |
|---------|-------|
| Target: | ENPP6 |
|---------|-------|

Target Details

| | |
|-------------------|---|
| Alternative Name: | ENPP6 (ENPP6 Products) |
| Background: | <p>Synonyms: B830047L21Rik, E-NPP 6, Ectonucleotide pyrophosphatase/phosphodiesterase 6, ectonucleotide pyrophosphatase/phosphodiesterase family member 6, ENPP 6, NPP 6, NPP6, ENPP6_HUMAN.</p> <p>Background: NPP6 is a 440 amino acid member of the nucleotide pyrophosphatase/phosphodiesterase family. NPP6 is a secreted and single-pass type I membrane protein. Predominantly expressed in brain and kidney, NPP6 is a choline-specific glycerophosphodiester phosphodiesterase. NPP6 can hydrolyze the classical substrate for phospholipase C, p-nitrophenyl phosphorylcholine, glycerophosphorylcholine, sphingosylphosphorylcholine and lysophosphatidylcholine (LPC). NPP6 has been found to have a preference for LPC with polyunsaturated or short fatty acids. The gene encoding NPP6 maps to human chromosome 4, which consists of approximately 6 % of the human genome and nearly 900 genes. Chromosome 4 is associated with Huntington's disease, FGFR-3, Ellis-van Creveld syndrome, methylmalonic acidemia and polycystic kidney disease.</p> |
| Gene ID: | 133121 |

Application Details

| | |
|--------------------|--|
| Application Notes: | WB 1:300-5000 ELISA 1:500-1000 IHC-P 1:200-400 IHC-F 1:100-500 IF(IHC-P) 1:50-200 IF(IHC-F) 1:50-200 IF(ICC) 1:50-200 ICC 1:100-500 |
| Restrictions: | For Research Use only |

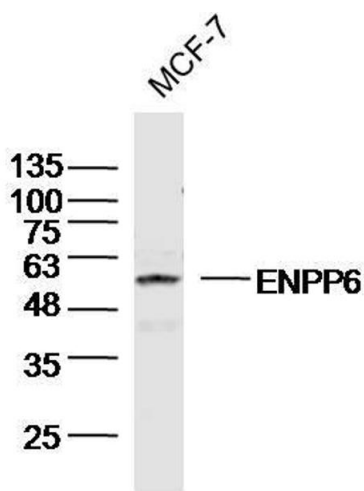
Handling

| | |
|----------------|---|
| Format: | Liquid |
| Concentration: | 1 µg/µL |
| Buffer: | 0.01M TBS(pH 7.4) with 1 % BSA, 0.02 % Proclin300 and 50 % Glycerol. |
| Preservative: | ProClin |

Handling

| | |
|--------------------|--|
| Precaution of Use: | This product contains ProClin: a POISONOUS AND HAZARDOUS SUBSTANCE, which should be handled by trained staff only. |
| Storage: | 4 °C,-20 °C |
| Storage Comment: | Shipped at 4°C. Store at -20°C for one year. Avoid repeated freeze/thaw cycles. |
| Expiry Date: | 12 months |

Images



Western Blotting

Image 1. MCF-7 Cell lysates probed with ENPP6 Polyclonal Antibody, unconjugated (bs-13076R) at 1:300 overnight at 4°C followed by a conjugated secondary antibody for 60 minutes at 37°C.