

Datasheet for ABIN1714800
anti-GFM2 antibody (AA 151-250)[Go to Product page](#)

1 Image

Overview

Quantity:	100 µL
Target:	GFM2
Binding Specificity:	AA 151-250
Reactivity:	Human, Rat
Host:	Rabbit
Clonality:	Polyclonal
Conjugate:	This GFM2 antibody is un-conjugated
Application:	Western Blotting (WB), ELISA, Immunofluorescence (Paraffin-embedded Sections) (IF (p)), Immunofluorescence (Cultured Cells) (IF (cc)), Immunohistochemistry (Paraffin-embedded Sections) (IHC (p)), Immunocytochemistry (ICC), Immunohistochemistry (Frozen Sections) (IHC (fro))

Product Details

Immunogen:	KLH conjugated synthetic peptide derived from human GFM2
Isotype:	IgG
Cross-Reactivity:	Human, Rat
Predicted Reactivity:	Mouse,Dog,Cow,Sheep,Pig
Purification:	Purified by Protein A.

Target Details

Target:	GFM2
---------	------

Target Details

Alternative Name:	GFM2 (GFM2 Products)
Background:	<p>Synonyms: EF-G2mt, EFG2, EFG2mt, elongation factor G 2, mitochondrial, Elongation factor G2, G elongation factor mitochondrial 2, GFM2, hEFG2, mEFG 2, mEFG2, Mitochondrial elongation factor G2, mitochondrial ribosome recycling factor 2, MRRF2, MST027, MSTP027, OTTHUMP00000222951, OTTHUMP00000222952, ribosome-releasing factor 2, mitochondrial, RRF2, RRF2mt.</p> <p>Background: GFM2 is a mitochondrial translation elongation factor. Its role in the regulation of normal mitochondrial function and in different disease states attributed to mitochondrial dysfunction is not known. Eukaryotes contain two protein translational systems, one in the cytoplasm and one in the mitochondria. Mitochondrial translation is crucial for maintaining mitochondrial function and mutations in this system lead to a breakdown in the respiratory chain oxidative phosphorylation system and to impaired maintenance of mitochondrial DNA.</p>
Gene ID:	84340
UniProt:	Q969S9
Pathways:	Ribonucleoprotein Complex Subunit Organization

Application Details

Application Notes:	WB 1:300-5000 ELISA 1:500-1000 IHC-P 1:200-400 IHC-F 1:100-500 IF(IHC-P) 1:50-200 IF(IHC-F) 1:50-200 IF(ICC) 1:50-200 ICC 1:100-500
Restrictions:	For Research Use only

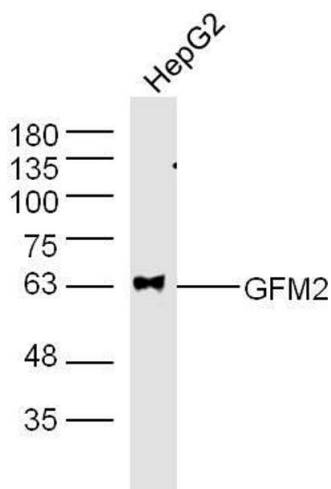
Handling

Format:	Liquid
Concentration:	1 µg/µL
Buffer:	0.01M TBS(pH 7.4) with 1 % BSA, 0.02 % Proclin300 and 50 % Glycerol.
Preservative:	ProClin

Handling

Precaution of Use:	This product contains ProClin: a POISONOUS AND HAZARDOUS SUBSTANCE, which should be handled by trained staff only.
Storage:	4 °C,-20 °C
Storage Comment:	Shipped at 4°C. Store at -20°C for one year. Avoid repeated freeze/thaw cycles.
Expiry Date:	12 months

Images



Western Blotting

Image 1. HepG2 (Human cell line) lysates probed with GFM2 Polyclonal Antibody, unconjugated at 1:300 overnight at 4°C followed by a conjugated secondary antibody at 1:10000 for 60 minutes at 37°C.