

Datasheet for ABIN1714802  
**anti-GGA2 antibody (AA 161-260)**

## 2 Images

[Go to Product page](#)

## Overview

Quantity:	100 µL
Target:	GGA2
Binding Specificity:	AA 161-260
Reactivity:	Rat
Host:	Rabbit
Clonality:	Polyclonal
Conjugate:	This GGA2 antibody is un-conjugated
Application:	Western Blotting (WB), ELISA, Immunocytochemistry (ICC), Flow Cytometry (FACS), Immunofluorescence (Cultured Cells) (IF (cc)), Immunofluorescence (Paraffin-embedded Sections) (IF (p)), Immunohistochemistry (Frozen Sections) (IHC (fro)), Immunohistochemistry (Paraffin-embedded Sections) (IHC (p))

## Product Details

Immunogen:	KLH conjugated synthetic peptide derived from human GGA2
Isotype:	IgG
Cross-Reactivity:	Rat
Predicted Reactivity:	Human,Mouse,Dog,Cow,Sheep,Pig,Rabbit
Purification:	Purified by Protein A.

## Target Details

Target:	GGA2
---------	------

## Target Details

Alternative Name:	GGA2 ( <a href="#">GGA2 Products</a> )
Background:	<p>Synonyms: VEAR, ADP-ribosylation factor-binding protein GGA2, Gamma-adaptin-related protein 2, Golgi-localized, gamma ear-containing, ARF-binding protein 2, VHS domain and ear domain of gamma-adaptin, GGA2, KIAA1080</p> <p>Background: Plays a role in protein sorting and trafficking between the trans-Golgi network (TGN) and endosomes. Mediates the ARF-dependent recruitment of clathrin to the TGN and binds ubiquitinated proteins and membrane cargo molecules with a cytosolic acidic cluster-dileucine (AC-LL) motif.</p>
Gene ID:	23062
UniProt:	<a href="#">Q9UJY4</a>

## Application Details

Application Notes:	WB 1:300-5000 ELISA 1:500-1000 FCM 1:20-100 IHC-P 1:200-400 IHC-F 1:100-500 IF(IHC-P) 1:50-200 IF(IHC-F) 1:50-200 IF(ICC) 1:50-200 ICC 1:100-500
Restrictions:	For Research Use only

## Handling

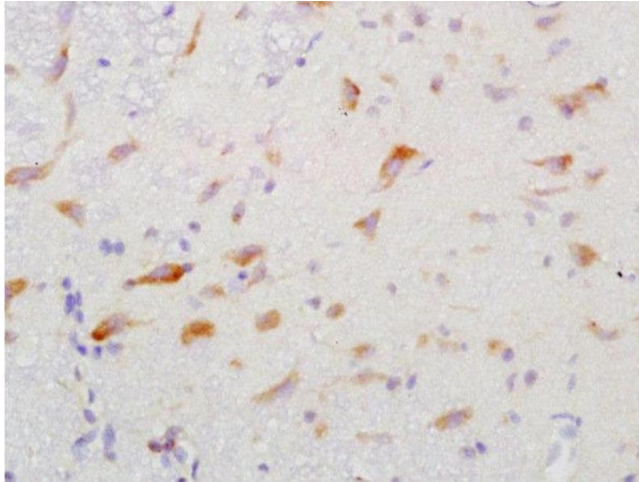
Format:	Liquid
Concentration:	1 µg/µL
Buffer:	0.01M TBS( pH 7.4) with 1 % BSA, 0.02 % Proclin300 and 50 % Glycerol.
Preservative:	ProClin
Precaution of Use:	This product contains ProClin: a POISONOUS AND HAZARDOUS SUBSTANCE, which should be handled by trained staff only.
Storage:	4 °C,-20 °C

## Handling

Storage Comment: Shipped at 4°C. Store at -20°C for one year. Avoid repeated freeze/thaw cycles.

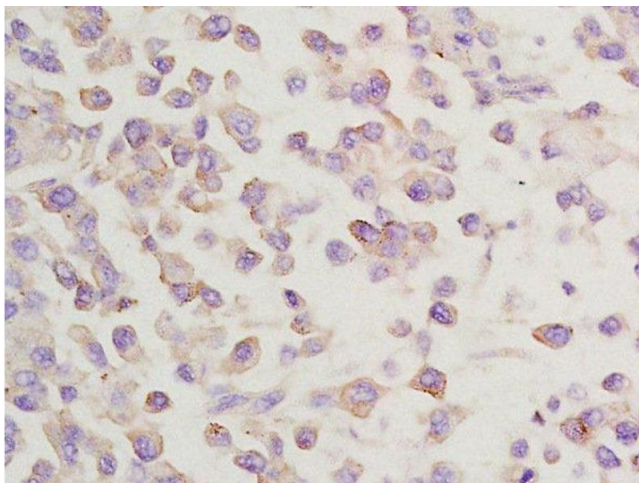
Expiry Date: 12 months

## Images



### Immunohistochemistry (Paraffin-embedded Sections)

**Image 1.** Formalin-fixed and paraffin embedded rat brain labeled with Anti-GGA2 Polyclonal Antibody, Unconjugated at 1:200 followed by conjugation to the secondary antibody and DAB staining



### Immunohistochemistry (Paraffin-embedded Sections)

**Image 2.** Formalin-fixed and paraffin embedded rat lung carcinoma labeled with Anti-GGA2 Polyclonal Antibody, Unconjugated at 1:200 followed by conjugation to the secondary antibody and DAB staining