

Datasheet for ABIN1714862  
**anti-PLAG1 antibody (AA 51-150)**[Go to Product page](#)

## 2 Images

## Overview

Quantity:	100 µL
Target:	PLAG1
Binding Specificity:	AA 51-150
Reactivity:	Mouse
Host:	Rabbit
Clonality:	Polyclonal
Conjugate:	This PLAG1 antibody is un-conjugated
Application:	Western Blotting (WB), ELISA

## Product Details

Immunogen:	KLH conjugated synthetic peptide derived from human PLAG1
Isotype:	IgG
Cross-Reactivity:	Mouse
Predicted Reactivity:	Human,Rat,Dog,Cow,Pig,Horse,Rabbit
Purification:	Purified by Protein A.

## Target Details

Target:	PLAG1
Alternative Name:	PLAG1 ( <a href="#">PLAG1 Products</a> )
Background:	Synonyms: PSA, SGPA, ZNF912, Zinc finger protein PLAG1, Pleiomorphic adenoma gene 1

## Target Details

protein, PLAG1

Background: Transcription factor whose activation results in up-regulation of target genes, such as IGFII, leading to uncontrolled cell proliferation: when overexpressed in cultured cells, higher proliferation rate and transformation are observed. Other target genes such as CRLF1, CRABP2, CRIP2, PIGF are strongly induced in cells with PLAG1 induction. Proto-oncogene whose ectopic expression can trigger the development of pleomorphic adenomas of the salivary gland and lipoblastomas. Overexpression is associated with up-regulation of IGFII, is frequently observed in hepatoblastoma, common primary liver tumor in childhood. Cooperates with CBFB-MYH11, a fusion gene important for myeloid leukemia.

Gene ID: 5324

UniProt: [Q6DJT9](#)

## Application Details

Application Notes: ELISA 1:500-1000

Restrictions: For Research Use only

## Handling

Format: Liquid

Concentration: 1 µg/µL

Buffer: 0.01M TBS( pH 7.4) with 1 % BSA, 0.02 % Proclin300 and 50 % Glycerol.

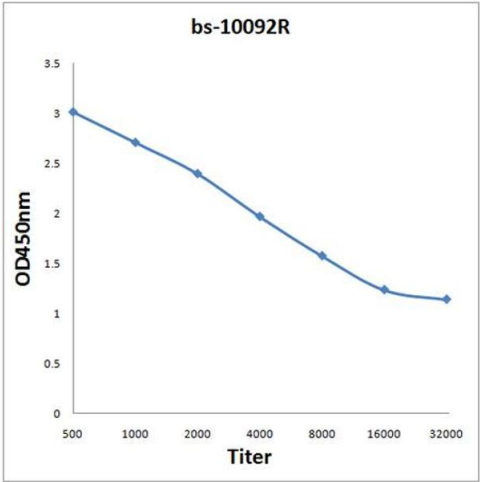
Preservative: ProClin

Precaution of Use: This product contains ProClin: a POISONOUS AND HAZARDOUS SUBSTANCE, which should be handled by trained staff only.

Storage: 4 °C,-20 °C

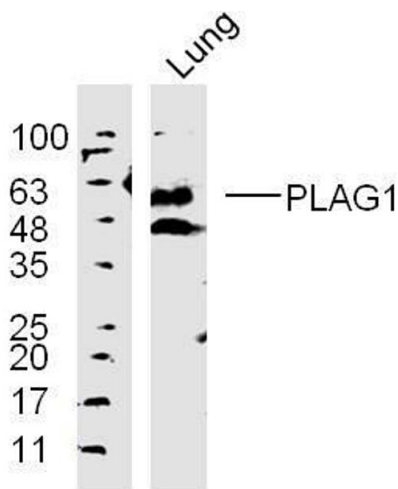
Storage Comment: Shipped at 4°C. Store at -20°C for one year. Avoid repeated freeze/thaw cycles.

Expiry Date: 12 months



### ELISA

**Image 1.** Antigen: 0.2 µg/100 µL Primary: Antiserum, 1:500, 1:1000, 1:2000, 1:4000, 1:8000, 1:16000, 1:32000; Secondary: HRP conjugated Goat-Anti-Rabbit IgG at 1: 5000; TMB staining; Read the data in MicroplateReader by 450



### Western Blotting

**Image 2.** Lane 1: mouse lung lysates probed with PLAG1 Polyclonal Antibody, Unconjugated at 1:300 overnight at 4°C. Followed by a conjugated secondary antibody at 1:10000 for 90 min at 37°C.