

Datasheet for ABIN1714863  
**anti-ATP2B1 antibody (AA 351-450)**[Go to Product page](#)

## 2 Images

## Overview

Quantity:	100 µL
Target:	ATP2B1
Binding Specificity:	AA 351-450
Reactivity:	Human, Dog
Host:	Rabbit
Clonality:	Polyclonal
Conjugate:	This ATP2B1 antibody is un-conjugated
Application:	Western Blotting (WB), ELISA, Immunohistochemistry (Paraffin-embedded Sections) (IHC (p)), Immunohistochemistry (Frozen Sections) (IHC (fro)), Immunocytochemistry (ICC), Immunofluorescence (Cultured Cells) (IF (cc)), Immunofluorescence (Paraffin-embedded Sections) (IF (p))

## Product Details

Immunogen:	KLH conjugated synthetic peptide derived from human PMCA1
Isotype:	IgG
Cross-Reactivity:	Dog, Human
Predicted Reactivity:	Mouse,Rat,Cow,Pig,Horse,Rabbit
Purification:	Purified by Protein A.

## Target Details

Target:	ATP2B1
---------	--------

## Target Details

Alternative Name:	PMCA1 ( <a href="#">ATP2B1 Products</a> )
Background:	<p>Synonyms: ATP2B1, AT2B1_HUMAN, ATP2B1, ATPase Ca++ transporting plasma membrane 1, Plasma membrane calcium ATPase 1, Plasma membrane calcium ATPase isoform 1, Plasma membrane calcium pump isoform 1, Plasma membrane calcium transporting ATPase 1, Plasma membrane calcium-transporting ATPase 1, PMCA 1, PMCA1.</p> <p>Background: Plasma membrane-type Ca<sup>2+</sup>-ATPases (PMCA) mediate the export of bivalent calcium ions from eukaryotic cells. As members of the P class of ion-motive ATPases, PMCA are a functionally diverse group of proteins that are derived from alternatively spliced transcripts originating from at least four distinct genes. The expression of different PMCA isoforms and splice variants is regulated in a developmental, tissue- and cell type-specific manner, and with respect to the physiological needs of specific cell and tissue types. Spatial and temporal rates of resting intracellular Ca<sup>2+</sup> concentrations and Ca<sup>2+</sup> signaling in eukaryotic cells are dependent on the array of PMCA isoforms that are expressed in concert with the rate of Ca<sup>2+</sup> export. PMCA1 (ATP2B1) is a ubiquitously expressed form of the PMCA calcium exporter family.</p>
Gene ID:	3820
UniProt:	<a href="#">P20020</a>
Pathways:	<a href="#">Ribonucleoside Biosynthetic Process</a>

## Application Details

Application Notes:	WB 1:300-5000 ELISA 1:500-1000 IHC-P 1:200-400 IHC-F 1:100-500 IF(IHC-P) 1:50-200 IF(IHC-F) 1:50-200 IF(ICC) 1:50-200 ICC 1:100-500
Restrictions:	For Research Use only

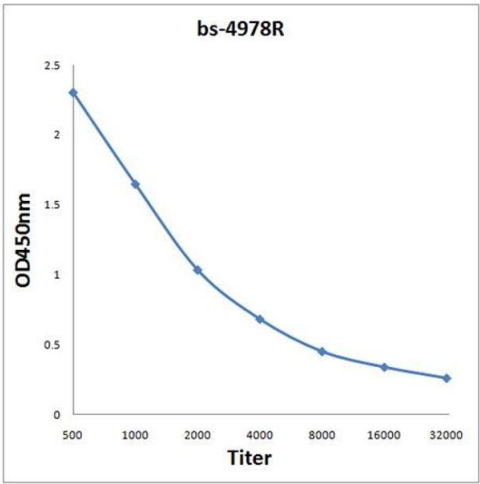
## Handling

Format:	Liquid
Concentration:	1 µg/µL

Handling

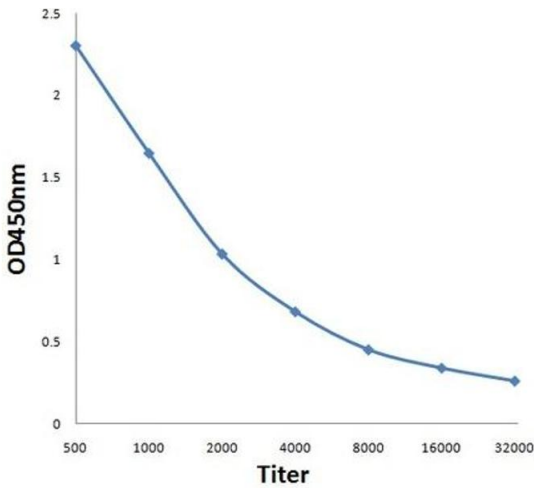
Buffer:	0.01M TBS( pH 7.4) with 1 % BSA, 0.02 % Proclin300 and 50 % Glycerol.
Preservative:	ProClin
Precaution of Use:	This product contains ProClin: a POISONOUS AND HAZARDOUS SUBSTANCE, which should be handled by trained staff only.
Storage:	4 °C,-20 °C
Storage Comment:	Shipped at 4°C. Store at -20°C for one year. Avoid repeated freeze/thaw cycles.
Expiry Date:	12 months

Images



ELISA

**Image 1.** Antigen: 0.2 µg/100 µL Primary: Antiserum, 1:500, 1:1000, 1:2000, 1:4000, 1:8000, 1:16000, 1:32000; Secondary: HRP conjugated Goat-Anti-Rabbit IgG at 1: 5000; TMB staining; Read the data in MicroplateReader by 450



ELISA

**Image 2.** Antigen: 0.2ug/100ul, Primary: Antiserum, 1:500, 1:1000, 1:2000, 1:4000, 1:8000, 1:16000, 1:32000, Secondary: HRP conjugated Goat-Anti-Rabbit IgG at 1: 5000, TMB staining, Read the data in MicroplateReader by 450nm