

Datasheet for ABIN1714875

**anti-Somatostatin antibody (AA 75-107)**[Go to Product page](#)**1** Image

## Overview

Quantity:	100 µL
Target:	Somatostatin (SST)
Binding Specificity:	AA 75-107
Reactivity:	Human, Mouse, Rat
Host:	Rabbit
Clonality:	Polyclonal
Conjugate:	This Somatostatin antibody is un-conjugated
Application:	Western Blotting (WB), Immunohistochemistry (Paraffin-embedded Sections) (IHC (p)), Immunofluorescence (Paraffin-embedded Sections) (IF (p))

## Product Details

Immunogen:	KLH conjugated synthetic peptide derived from human Somatostatin
Isotype:	IgG
Cross-Reactivity:	Human, Mouse, Rat
Purification:	Purified by Protein A.

## Target Details

Target:	Somatostatin (SST)
Alternative Name:	Somatostatin ( <a href="#">SST Products</a> )
Target Type:	Chemical

### Target Details

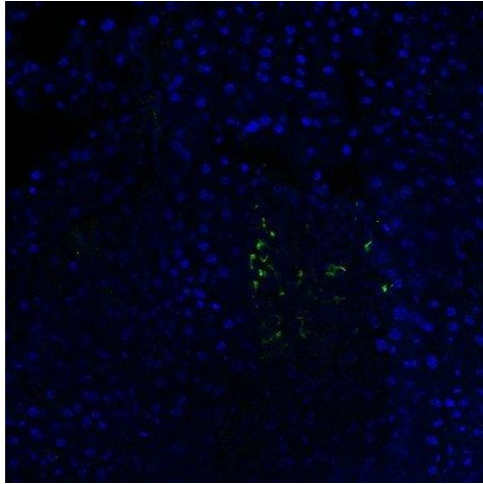
Background:	Synonyms: SMST, Somatostatin, Growth hormone release-inhibiting factor, SST Background: Somatostatin inhibits the release of somatotropin.
Gene ID:	6750
UniProt:	<a href="#">P61278</a>

### Application Details

Application Notes:	WB 1:300-5000 IHC-P 1:200-400 IF(IHC-P) 1:50-200 IF(IHC-F) 1:50-200
Restrictions:	For Research Use only

### Handling

Format:	Liquid
Concentration:	1 µg/µL
Buffer:	0.01M TBS( pH 7.4) with 1 % BSA, 0.02 % Proclin300 and 50 % Glycerol.
Preservative:	ProClin
Precaution of Use:	This product contains ProClin: a POISONOUS AND HAZARDOUS SUBSTANCE, which should be handled by trained staff only.
Storage:	4 °C,-20 °C
Storage Comment:	Shipped at 4°C. Store at -20°C for one year. Avoid repeated freeze/thaw cycles.
Expiry Date:	12 months



#### Immunofluorescence (Paraffin-embedded Sections)

**Image 1.** Mouse Pancreas (C57BL/6 strain) fixed in 4% PFA for 2 hours at RT, then transferred to 30% sucrose overnight at 4 °C before embedding in OCT mounting medium. Treated with TBS containing 5% goat serum and 0.3% Triton X-100, to block unspecific binding sites and permeabilize cell membranes, for 30min at RT. Antibody (ABIN1714875-FITC) diluted at 1:100 in TBS containing 2% goat serum applied and incubated overnight at 4 °C. Rinse sections in TBS 2x5min on a shaker, mount section with vectorshield (with DAPI), then cover them with coverslips and seal the edge of the coverslip on the slide with nail polish. This image was kindly submitted by an end-user from the National Childrens Research Centre, Our Ladys Childrens Hospital, Dublin, Ireland.