



Datasheet for ABIN1714876
anti-SOX7 antibody (AA 42-100)



[Go to Product page](#)

1 Image

Overview

Quantity:	100 µL
Target:	SOX7
Binding Specificity:	AA 42-100
Reactivity:	Human, Mouse
Host:	Rabbit
Clonality:	Polyclonal
Conjugate:	This SOX7 antibody is un-conjugated
Application:	ELISA, Immunofluorescence (Cultured Cells) (IF (cc)), Immunofluorescence (Paraffin-embedded Sections) (IF (p)), Immunohistochemistry (Paraffin-embedded Sections) (IHC (p)), Immunohistochemistry (Frozen Sections) (IHC (fro)), Immunocytochemistry (ICC)

Product Details

Immunogen:	KLH conjugated synthetic peptide derived from human SOX7
Isotype:	IgG
Cross-Reactivity:	Human, Mouse
Predicted Reactivity:	Rat,Dog,Cow,Pig,Rabbit
Purification:	Purified by Protein A.

Target Details

Target:	SOX7
---------	------

Target Details

Alternative Name: [SOX7 \(SOX7 Products\)](#)

Background: Synonyms: MGC10895, SOX 7, SOX 7 transcription factor, sox7, SOX7 transcription factor, SOX7_HUMAN, SRY sex determining region Y box 7, SRY box 7, SRY sex determining region Y box 7, Transcription factor SOX 7, Transcription factor Sox-7, Transcription factor SOX7.

Background: Sox genes comprise a family of genes that are related to the mammalian sex determining gene SRY. These genes similarly contain sequences that encode for the HMG-box domain, which is responsible for the sequence-specific DNA-binding activity. Sox genes encode putative transcriptional regulators implicated in the decision of cell fates during development and the control of diverse developmental processes. The highly complex group of Sox genes cluster at least 40 different loci that rapidly diverged in various animal lineages. At present, 30 Sox genes have been identified. Members of this family have been shown to be conserved during evolution and to play key roles during animal development. Some are involved in human diseases, including sex reversal.

Gene ID: 83595

UniProt: [Q9BT81](#)

Pathways: [Positive Regulation of Endopeptidase Activity](#)

Application Details

Application Notes: ELISA 1:500-1000
IHC-P 1:200-400
IHC-F 1:100-500
IF(IHC-P) 1:50-200
IF(IHC-F) 1:50-200
IF(ICC) 1:50-200
ICC 1:100-500

Restrictions: For Research Use only

Handling

Format: Liquid

Concentration: 1 µg/µL

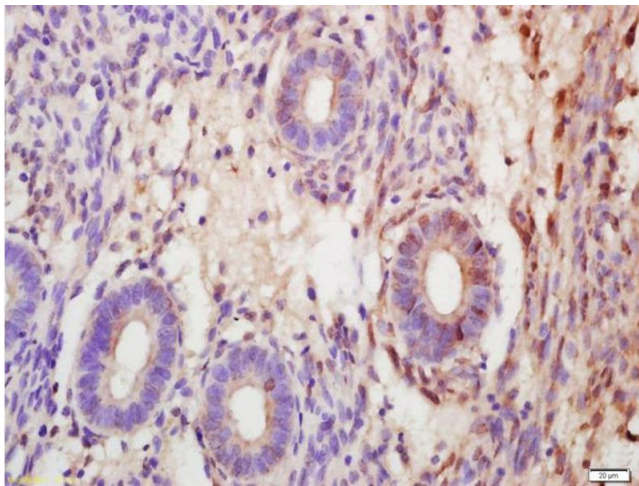
Buffer: 0.01M TBS(pH 7.4) with 1 % BSA, 0.02 % Proclin300 and 50 % Glycerol.

Preservative: ProClin

Handling

Precaution of Use:	This product contains ProClin: a POISONOUS AND HAZARDOUS SUBSTANCE, which should be handled by trained staff only.
Storage:	4 °C, -20 °C
Storage Comment:	Shipped at 4°C. Store at -20°C for one year. Avoid repeated freeze/thaw cycles.
Expiry Date:	12 months

Images



Immunohistochemistry

Image 1. Formalin-fixed and paraffin embedded human endometrial carcinoma labeled with Anti-SOX7 Polyclonal Antibody, Unconjugated (ABIN1714876) at 1:200 followed by conjugation to the secondary antibody and DAB staining