

Datasheet for ABIN1714907
anti-ELK1 antibody (pSer383)[Go to Product page](#)

2 Images

Overview

Quantity:	100 µL
Target:	ELK1
Binding Specificity:	pSer383
Reactivity:	Human, Mouse
Host:	Rabbit
Clonality:	Polyclonal
Conjugate:	This ELK1 antibody is un-conjugated
Application:	Western Blotting (WB), ELISA, Immunohistochemistry (Paraffin-embedded Sections) (IHC (p))

Product Details

Immunogen:	KLH conjugated synthetic phosphopeptide derived from human ELK1 around the phosphorylation site of Ser383
Isotype:	IgG
Cross-Reactivity:	Human, Mouse
Predicted Reactivity:	Rat,Dog,Cow,Pig,Horse,Rabbit
Purification:	Purified by Protein A.

Target Details

Target:	ELK1
Alternative Name:	ELK1 (ELK1 Products)

Target Details

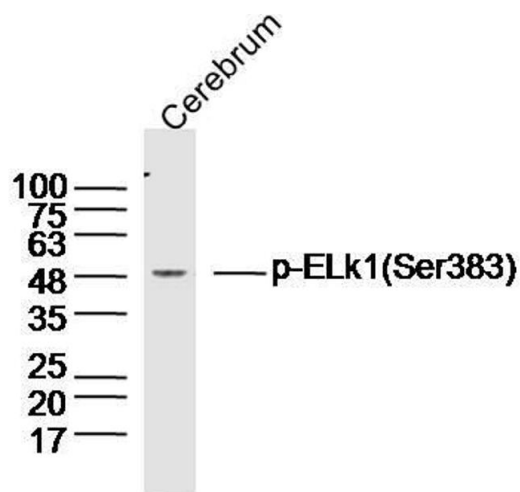
Background:	Synonyms: ETS domain-containing protein Elk-1, ELK1 Background: Transcription factor that binds to purine-rich DNA sequences. Forms a ternary complex with SRF and the ETS and SRF motifs of the serum response element (SRE) on the promoter region of immediate early genes such as FOS and IER2. Induces target gene transcription upon JNK-signaling pathway stimulation (By similarity).
Gene ID:	2002
UniProt:	P19419
Pathways:	MAPK Signaling , Neurotrophin Signaling Pathway , Activation of Innate immune Response , Toll-Like Receptors Cascades , Signaling of Hepatocyte Growth Factor Receptor , BCR Signaling

Application Details

Application Notes:	WB 1:300-5000 ELISA 1:500-1000 IHC-P 1:200-400
Restrictions:	For Research Use only

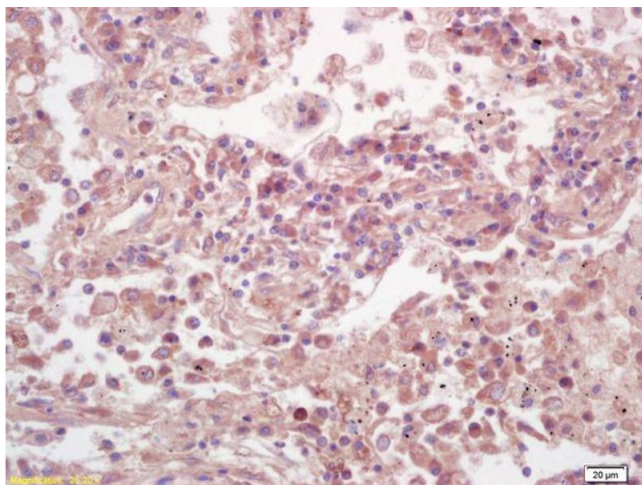
Handling

Format:	Liquid
Concentration:	1 µg/µL
Buffer:	0.01M TBS(pH 7.4) with 1 % BSA, 0.02 % Proclin300 and 50 % Glycerol.
Preservative:	ProClin
Precaution of Use:	This product contains ProClin: a POISONOUS AND HAZARDOUS SUBSTANCE, which should be handled by trained staff only.
Storage:	4 °C,-20 °C
Storage Comment:	Shipped at 4°C. Store at -20°C for one year. Avoid repeated freeze/thaw cycles.
Expiry Date:	12 months



Western Blotting

Image 1. Mouse brain lysates probed with ELk1(Ser383) Polyclonal Antibody, unconjugated at 1:300 overnight at 4°C followed by a conjugated secondary antibody at 1:10000 for 90 minutes at 37°C.



Immunohistochemistry

Image 2. Formalin-fixed and paraffin embedded human lung carcinoma labeled with Anti-Phospho-ELk1(Ser383) Polyclonal Antibody, Unconjugated (ABIN1714907) at 1:200 followed by conjugation to the secondary antibody and DAB staining.