



[Go to Product page](#)

Datasheet for ABIN1714919
anti-MCTS1 antibody (AA 251-350)

1 Image

Overview

Quantity:	100 µL
Target:	MCTS1
Binding Specificity:	AA 251-350
Reactivity:	Human
Host:	Rabbit
Clonality:	Polyclonal
Conjugate:	This MCTS1 antibody is un-conjugated
Application:	Western Blotting (WB), ELISA, Flow Cytometry (FACS), Immunofluorescence (Cultured Cells) (IF (cc)), Immunofluorescence (Paraffin-embedded Sections) (IF (p)), Immunohistochemistry (Paraffin-embedded Sections) (IHC (p)), Immunohistochemistry (Frozen Sections) (IHC (fro)), Immunocytochemistry (ICC)

Product Details

Immunogen:	KLH conjugated synthetic peptide derived from human MCT1
Isotype:	IgG
Predicted Reactivity:	Mouse,Rat,Dog,Cow,Pig,Horse,Rabbit,Guinea Pig
Purification:	Purified by Protein A.

Target Details

Target:	MCTS1
Alternative Name:	MCT1 (MCTS1 Products)

Target Details

Background: Proton-coupled monocarboxylate transporter. Catalyzes the rapid transport across the plasma membrane of many monocarboxylates such as lactate, pyruvate, branched-chain oxo acids derived from leucine, valine and isoleucine, and the ketone bodies acetoacetate, beta-hydroxybutyrate and acetate. Depending on the tissue and on circumstances, mediates the import or export of lactic acid and ketone bodies. Required for normal nutrient assimilation, increase of white adipose tissue and body weight gain when on a high-fat diet. Plays a role in cellular responses to a high-fat diet by modulating the cellular levels of lactate and pyruvate, small molecules that contribute to the regulation of central metabolic pathways and insulin secretion, with concomitant effects on plasma insulin levels and blood glucose homeostasis.

Subcellular location: Cell membrane

Synonyms: MCT, HHF7, MCT1, MCT1D, Monocarboxylate transporter 1, MCT 1, Solute carrier family 16 member 1, SLC16A1

Gene ID: 6566

UniProt: [P53985](#)

Application Details

Application Notes: WB 1:300-5000
ELISA 1:500-1000
FCM 1:20-100
IHC-P 1:200-400
IHC-F 1:100-500
IF(IHC-P) 1:50-200
IF(IHC-F) 1:50-200
IF(ICC) 1:50-200
ICC 1:100-500

Restrictions: For Research Use only

Handling

Format: Liquid

Concentration: 1 µg/µL

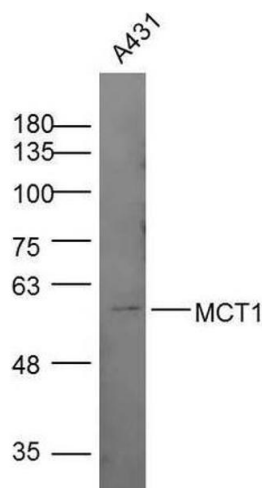
Buffer: 0.01M TBS(pH 7.4) with 1 % BSA, 0.03 % Proclin300 and 50 % Glycerol.

Preservative: ProClin

Handling

Precaution of Use:	This product contains ProClin: a POISONOUS AND HAZARDOUS SUBSTANCE, which should be handled by trained staff only.
Storage:	-20 °C
Storage Comment:	Store at -20°C for one year. Avoid repeated freeze/thaw cycles.
Expiry Date:	12 months

Images



Western Blotting

Image 1. Lane 1: A431 lysates, probed with MCT1 Polyclonal Antibody, Unconjugated at 1:300 overnight at 4°C. Followed by a conjugated secondary antibody at 1:10000 for 60 min at 37°C.