



[Go to Product page](#)

Datasheet for ABIN1714942  
**anti-IBA57 antibody (AA 131-230)**

1 Image

### Overview

Quantity:	100 µL
Target:	IBA57
Binding Specificity:	AA 131-230
Reactivity:	Rat
Host:	Rabbit
Clonality:	Polyclonal
Conjugate:	This IBA57 antibody is un-conjugated
Application:	Western Blotting (WB), Immunofluorescence (Cultured Cells) (IF (cc)), Immunofluorescence (Paraffin-embedded Sections) (IF (p)), ELISA, Immunohistochemistry (Paraffin-embedded Sections) (IHC (p)), Immunohistochemistry (Frozen Sections) (IHC (fro)), Immunocytochemistry (ICC)

### Product Details

Immunogen:	KLH conjugated synthetic peptide derived from human C1orf69
Isotype:	IgG
Cross-Reactivity:	Rat
Predicted Reactivity:	Human,Mouse,Pig
Purification:	Purified by Protein A.

### Target Details

Target:	IBA57
---------	-------

## Target Details

---

Alternative Name: C1orf69 ([IBA57 Products](#))

---

Background: Synonyms: C1orf69, CA069\_HUMAN, CAF17\_HUMAN, FLJ12734, FLJ13849, IBA57, IBA57 iron sulfur cluster assembly homolog, IBA57 iron sulfur cluster assembly homolog *S. cerevisiae*, Iron sulfur cluster assembly factor for biotin synthase and aconitase like, Iron-sulfur cluster assembly factor homolog, mitochondrial, Mitochondrial proteins with a mass of 57 kDa, Putative transferase C1orf69, Putative transferase C1orf69 mitochondrial, Putative transferase CAF17, mitochondrial.

Background: Belonging to the CAF17 subfamily of the *gcvT* family, C1orf69 is a 356 amino acid mitochondrial protein that is required for normal heme synthesis. Heme synthesis is dependent upon receiving iron through iron sulfur (Fe-S) cluster biogenesis proteins such as C1orf69, which is specifically thought to assemble Fe-S clusters for mitochondrial aconitase and lipoate synthase. In zebrafish, deficiency of C1orf69 causes anemia. The gene encoding C1orf69 maps to human chromosome 1, the largest human chromosome spanning about 260 million base pairs and making up 8 % of the human genome. There are about 3,000 genes on chromosome 1, and considering the great number of genes there are also a large number of diseases associated with chromosome 1.

---

Gene ID: 200205

---

## Application Details

---

Application Notes: WB 1:300-5000  
ELISA 1:500-1000  
IHC-P 1:200-400  
IHC-F 1:100-500  
IF(IHC-P) 1:50-200  
IF(IHC-F) 1:50-200  
IF(ICC) 1:50-200  
ICC 1:100-500

---

Restrictions: For Research Use only

---

## Handling

---

Format: Liquid

---

Concentration: 1 µg/µL

---

Buffer: 0.01M TBS( pH 7.4) with 1 % BSA, 0.02 % Proclin300 and 50 % Glycerol.

---

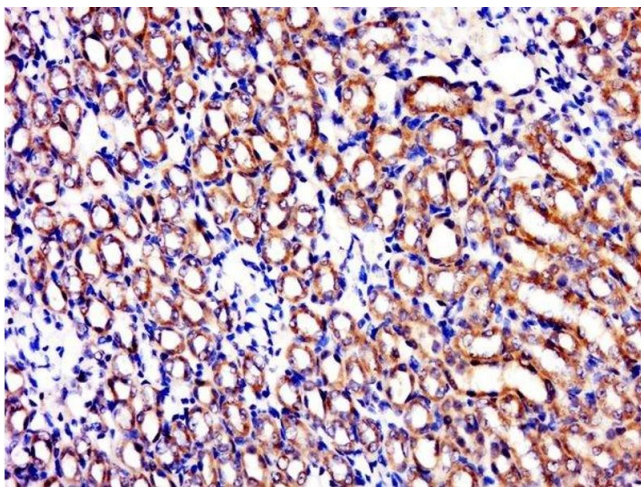
## Handling

---

Preservative:	ProClin
Precaution of Use:	This product contains ProClin: a POISONOUS AND HAZARDOUS SUBSTANCE, which should be handled by trained staff only.
Storage:	4 °C,-20 °C
Storage Comment:	Shipped at 4°C. Store at -20°C for one year. Avoid repeated freeze/thaw cycles.
Expiry Date:	12 months

## Images

---



### Immunohistochemistry (Paraffin-embedded Sections)

**Image 1.** Paraformaldehyde-fixed, paraffin embedded rat kidney, Antigen retrieval by boiling in sodium citrate buffer (pH6.0) for 15min, Block endogenous peroxidase by 3% hydrogen peroxide for 20 minutes, Blocking buffer (normal goat serum) at 37°C for 30min, Antibody incubation with C1orf69 Polyclonal Antibody, Unconjugated at 1:500 overnight at 4°C, followed by a conjugated secondary for 20 minutes and DAB staining