



[Go to Product page](#)

Datasheet for ABIN1714946

anti-POLG antibody (AA 1101-1239)

2 Images

1 Publication

Overview

Quantity:	100 µL
Target:	POLG
Binding Specificity:	AA 1101-1239
Reactivity:	Human, Mouse, Rat
Host:	Rabbit
Clonality:	Polyclonal
Conjugate:	This POLG antibody is un-conjugated
Application:	Western Blotting (WB), ELISA, Immunohistochemistry (Paraffin-embedded Sections) (IHC (p)), Immunocytochemistry (ICC), Immunofluorescence (Cultured Cells) (IF (cc)), Immunofluorescence (Paraffin-embedded Sections) (IF (p)), Immunohistochemistry (Frozen Sections) (IHC (fro))

Product Details

Immunogen:	KLH conjugated synthetic peptide derived from human POLG
Isotype:	IgG
Cross-Reactivity:	Human, Mouse, Rat
Predicted Reactivity:	Pig
Purification:	Purified by Protein A.

Target Details

Target:	POLG
---------	------

Target Details

Alternative Name:	DNA Polymerase gamma (POLG Products)
Target Type:	Viral Protein
Background:	Synonyms: PEO, MDP1, SCAE, MIRAS, POLG1, POLGA, SANDO, MTDPS4A, MTDPS4B, DNA polymerase subunit gamma-1, Mitochondrial DNA polymerase catalytic subunit, PolG-alpha, POLG Background: Involved in the replication of mitochondrial DNA. Associates with mitochondrial DNA.
Gene ID:	5428
UniProt:	P54098

Application Details

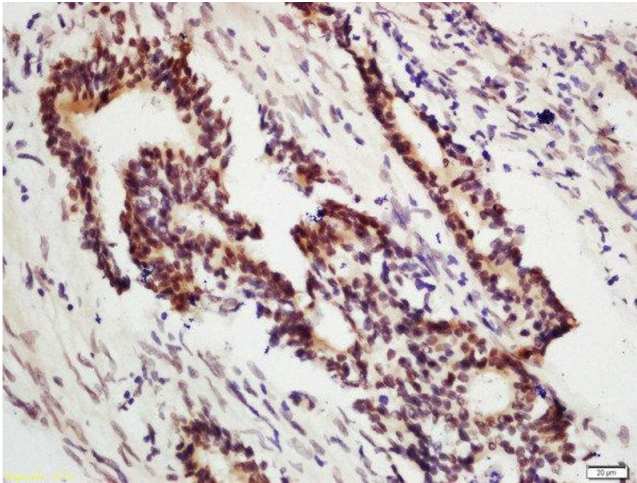
Application Notes:	WB 1:300-5000 ELISA 1:500-1000 IHC-P 1:200-400 IHC-F 1:100-500 IF(IHC-P) 1:50-200 IF(IHC-F) 1:50-200 IF(ICC) 1:50-200 ICC 1:100-500
Restrictions:	For Research Use only

Handling

Format:	Liquid
Concentration:	1 µg/µL
Buffer:	0.01M TBS(pH 7.4) with 1 % BSA, 0.02 % Proclin300 and 50 % Glycerol.
Preservative:	ProClin
Precaution of Use:	This product contains ProClin: a POISONOUS AND HAZARDOUS SUBSTANCE, which should be handled by trained staff only.
Storage:	4 °C,-20 °C
Storage Comment:	Shipped at 4°C. Store at -20°C for one year. Avoid repeated freeze/thaw cycles.
Expiry Date:	12 months

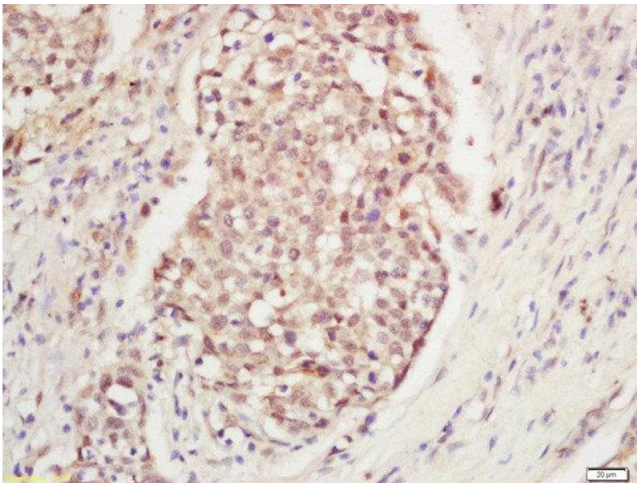
Product cited in: Chen, Zhao, Cai, Sun, Hu, Huang, Kong, Kong: "The role of sodium hydrosulfide in attenuating the aging process via PI3K/AKT and CaMKK β /AMPK pathways." in: **Redox biology**, Vol. 12, pp. 987-1003, (2017) ([PubMed](#)).

Images



Immunohistochemistry (Paraffin-embedded Sections)

Image 1. Formalin-fixed and paraffin embedded human colon carcinoma labeled with Anti-DNA Polymerase gamma Polyclonal Antibody, Unconjugated at 1:200 followed by conjugation to the secondary antibody and DAB staining.



Immunohistochemistry (Paraffin-embedded Sections)

Image 2. Formalin-fixed and paraffin embedded human laryngeal tissue labeled with Anti-DNA Polymerase gamma Polyclonal Antibody, Unconjugated at 1:200 followed by conjugation to the secondary antibody and DAB staining.