

Datasheet for ABIN1714953  
**anti-MUC13 antibody (AA 175-270)**[Go to Product page](#)

## 1 Image

## Overview

Quantity:	100 µL
Target:	MUC13
Binding Specificity:	AA 175-270
Reactivity:	Mouse
Host:	Rabbit
Clonality:	Polyclonal
Conjugate:	This MUC13 antibody is un-conjugated
Application:	Western Blotting (WB), ELISA, Immunohistochemistry (Paraffin-embedded Sections) (IHC (p)), Immunofluorescence (Cultured Cells) (IF (cc)), Immunofluorescence (Paraffin-embedded Sections) (IF (p)), Immunocytochemistry (ICC), Immunohistochemistry (Frozen Sections) (IHC (fro))

## Product Details

Immunogen:	KLH conjugated synthetic peptide derived from human MUC13
Isotype:	IgG
Cross-Reactivity:	Mouse
Predicted Reactivity:	Human,Rat,Pig,Horse
Purification:	Purified by Protein A.

## Target Details

Target:	MUC13
---------	-------

## Target Details

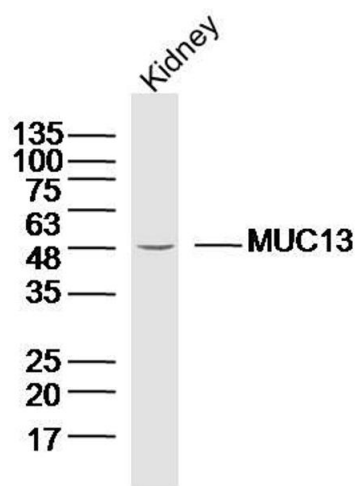
Alternative Name:	MUC13 ( <a href="#">MUC13 Products</a> )
Background:	Synonyms: DRCC1, MUC-13, Mucin-13, Down-regulated in colon cancer 1, MUC13, RECC, UNQ6194/PRO20221  Background: Epithelial and hemopoietic transmembrane mucin that may play a role in cell signaling.
Gene ID:	56667
UniProt:	<a href="#">Q9H3R2</a>

## Application Details

Application Notes:	WB 1:300-5000 ELISA 1:500-1000 IHC-P 1:200-400 IHC-F 1:100-500 IF(IHC-P) 1:50-200 IF(IHC-F) 1:50-200 IF(ICC) 1:50-200 ICC 1:100-500
Restrictions:	For Research Use only

## Handling

Format:	Liquid
Concentration:	1 µg/µL
Buffer:	0.01M TBS( pH 7.4) with 1 % BSA, 0.02 % Proclin300 and 50 % Glycerol.
Preservative:	ProClin
Precaution of Use:	This product contains ProClin: a POISONOUS AND HAZARDOUS SUBSTANCE, which should be handled by trained staff only.
Storage:	4 °C,-20 °C
Storage Comment:	Shipped at 4°C. Store at -20°C for one year. Avoid repeated freeze/thaw cycles.
Expiry Date:	12 months



Western Blotting

**Image 1.** Lane 1: Mouse kidney lysates probed with Anti MUC13 Polyclonal Antibody, Unconjugated at 1:300 overnight at 4°C. Followed by a conjugated secondary antibody at 1:5000 for 90 min at 37°C.