

Datasheet for ABIN1715043  
**anti-KIF13B antibody (AA 351-450)**[Go to Product page](#)

## 1 Image

## Overview

Quantity:	100 µL
Target:	KIF13B
Binding Specificity:	AA 351-450
Reactivity:	Mouse, Rat
Host:	Rabbit
Clonality:	Polyclonal
Conjugate:	This KIF13B antibody is un-conjugated
Application:	ELISA, Western Blotting (WB), Immunofluorescence (Cultured Cells) (IF (cc)), Immunofluorescence (Paraffin-embedded Sections) (IF (p)), Immunohistochemistry (Paraffin- embedded Sections) (IHC (p)), Immunohistochemistry (Frozen Sections) (IHC (fro)), Immunocytochemistry (ICC)

## Product Details

Immunogen:	KLH conjugated synthetic peptide derived from human KIF13B
Isotype:	IgG
Cross-Reactivity:	Mouse, Rat
Predicted Reactivity:	Human,Cow,Sheep,Pig,Horse
Purification:	Purified by Protein A.

## Target Details

Target:	KIF13B
---------	--------

## Target Details

Alternative Name:	KIF13B ( <a href="#">KIF13B Products</a> )
Background:	<p>Synonyms: GAKIN, Guanylate kinase associated kinesin, KI13B_HUMAN, KIAA0639, K 13B, K13B, Kinesin 13B, Kinesin family member 13B, Kinesin like protein GAKIN, Kinesin like protein K13B, Kinesin-like protein GAKIN, Kinesin-like protein K13B, OTTHUMP00000225649.</p> <p>Background: KIF13B is also known as Kinesin-like protein GAKIN or GAKIN and is a 1,826 amino acid protein that is widely expressed in tissues, with highest expression in brain and kidney. KIF13B is localized to the cytoplasm, as well as to the cytoskeleton, and is thought to be a microtubule-dependent motor protein which is able to bind to a variety of proteins in order to traffic them to various locations throughout the cell. KIF13B belongs to the kinesin-like protein family and possesses three domains typical of the kinesin-like protein family, namely an N-terminal motor domain with an ATP-binding motif, an FHA domain which is known to bind diverse cargos and a large stalk domain involved in protein-protein binding. Additionally, KIF13B has a microtubule-interacting sequence which is known as the CAP-Gly domain at its C-terminus. The CAP-Gly domain is highly conserved domain among eukaryotes, and in humans, defects in the CAP-Gly domain are implicated in many diseases affecting the trafficking of vesicles, neuromuscular junctions and lysosome proliferation.</p>
Gene ID:	23303
UniProt:	<a href="#">Q9NQT8</a>

## Application Details

Application Notes:	WB 1:300-5000 ELISA 1:500-1000 IHC-P 1:200-400 IHC-F 1:100-500 IF(IHC-P) 1:50-200 IF(IHC-F) 1:50-200 IF(ICC) 1:50-200 ICC 1:100-500
Restrictions:	For Research Use only

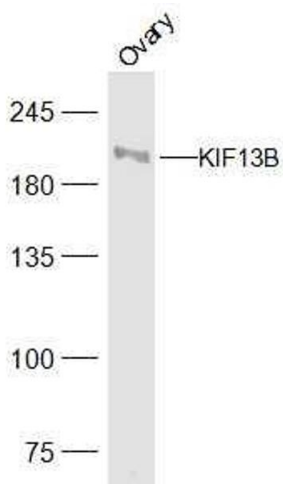
## Handling

Format:	Liquid
Concentration:	1 µg/µL

Handling

Buffer:	0.01M TBS( pH 7.4) with 1 % BSA, 0.02 % Proclin300 and 50 % Glycerol.
Preservative:	ProClin
Precaution of Use:	This product contains ProClin: a POISONOUS AND HAZARDOUS SUBSTANCE, which should be handled by trained staff only.
Storage:	4 °C,-20 °C
Storage Comment:	Shipped at 4°C. Store at -20°C for one year. Avoid repeated freeze/thaw cycles.
Expiry Date:	12 months

Images



Western Blotting

**Image 1.** Rat ovary lysates probed with KIF13B Polyclonal Antibody, Unconjugated at 1:500 dilution and 4°C overnight incubation. Followed by conjugated secondary antibody incubation at 1:10000 for 60 min at 37°C.