

Datasheet for ABIN1720796
anti-TMEM37 antibody (N-Term)[Go to Product page](#)

2 Images

Overview

Quantity:	50 µL
Target:	TMEM37
Binding Specificity:	N-Term
Reactivity:	Zea mays, Wheat, Tomato, Spinach, Barley, Arabidopsis thaliana
Host:	Rabbit
Clonality:	Polyclonal
Conjugate:	This TMEM37 antibody is un-conjugated
Application:	Western Blotting (WB)

Product Details

Immunogen:	N-terminal part of recombinant PR-1 protein from Arabidopsis thaliana UniProt: P33154, TAIR: At2g14610
Specificity:	TAIR: At2g14610
Cross-Reactivity (Details):	Not reactive in: no confirmed exceptions from predicted reactivity are currently known
Predicted Reactivity:	Brassica rapa subsp. pekinensis, Brassica napus, Eutrema japonica, Glycine max, Solanum tuberosum
Purification:	serum

Target Details

Target:	TMEM37
---------	--------

Target Details

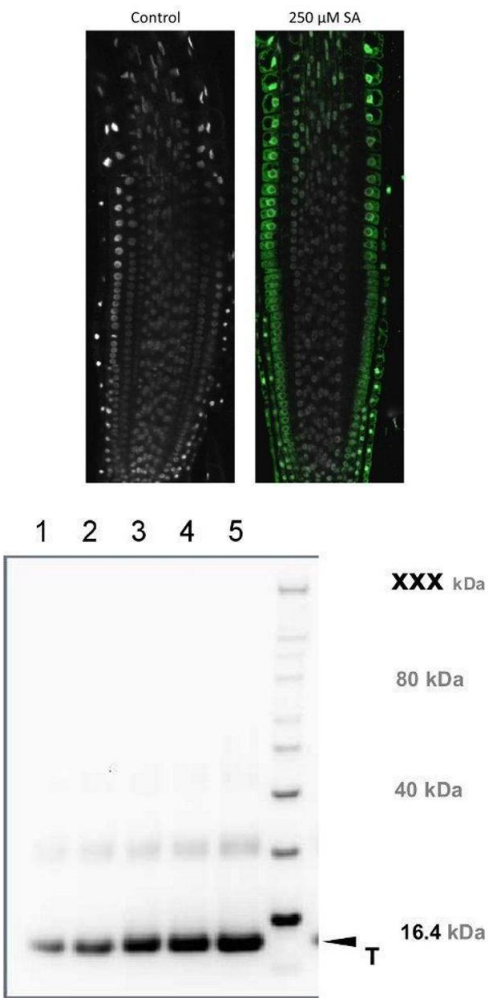
Alternative Name:	PR-1 (TMEM37 Products)
Background:	AGI Code: At2g14610 Pathogenesis-related protein 1 (PR-1) is partially responsible for acquired pathogen resistance. Induced by INA, salicylic acid and pathogen infection.
Molecular Weight:	17.7 kDa (Arabidopsis thaliana)
Pathways:	Response to Water Deprivation

Application Details

Application Notes:	1: 2500 (WB)
Restrictions:	For Research Use only

Handling

Format:	Lyophilized
Reconstitution:	For reconstitution add 50 µL of sterile water.
Handling Advice:	Avoid repeated freeze-thaw cycles. Please, remember to spin tubes briefly prior to opening them to avoid any losses that might occur from lyophilized material adhering to the cap or sides of the tubes.
Storage:	-20 °C
Storage Comment:	store lyophilized/reconstituted at -20°C, once reconstituted make aliquots to avoid repeated freeze-thaw cycles. Please, remember to spin tubes briefly prior to opening them to avoid any losses that might occur from lyophilized material adhering to the cap or sides of the tubes.



Immunofluorescence

Image 1.

Western Blotting

Image 2.