

Datasheet for ABIN1721844

anti-14-3-3 gamma antibody (N-Term)



[Go to Product page](#)

2 Images

Overview

Quantity:	100 µL
Target:	14-3-3 gamma (YWHAG1)
Binding Specificity:	N-Term
Reactivity:	Human
Host:	Mouse
Clonality:	Monoclonal
Conjugate:	This 14-3-3 gamma antibody is un-conjugated
Application:	Western Blotting (WB)

Product Details

Immunogen:	This antibody was raised against an N-terminal fragment of human 14-3-3 gamma where the N-term Val was acetylated
Clone:	KC21
Isotype:	IgG2a
Specificity:	Monoclonal antibody reacts specifically with human 14-3-3 gamma.
Cross-Reactivity (Details):	Cross reacts with the naturally occurring human form of 14-3-3 gamma, where the N-terminal Met is removed, resulting in an acetylated N-terminal Val Unprocessed (non-modified) 14-3-3 gamma is not recognized by this antibody
Purification:	Ascites

Target Details

Target:	14-3-3 gamma (YWHAG1)
Alternative Name:	14-3-3 gamma (YWHAG1 Products)
Pathways:	Myometrial Relaxation and Contraction, M Phase

Application Details

Application Notes:	<p>This antibody can be used in Western Blot where a distinct band around 33 kDa is detected.</p> <p>Working Dilutions: Optimal dilution should be determined by the end user The following are guidelines only : - Western Blot : 1:3 000</p>
Restrictions:	For Research Use only

Handling

Format:	Liquid
Preservative:	Without preservative
Storage:	4 °C/-20 °C
Storage Comment:	Short term storage : +4°C Long term storage : -20°C

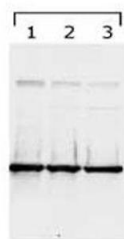
Images



Image 1.

14-3-3 gamma detected in lysates using mab50115
Lane 1: HeLa cell lysates
Lanes 2 and 3: bengamide treated lysates (8h and 24h, respectively)

14-3-3 gamma (clone KC21) antibody (mab50115)



14-3-3 gamma detected in lysates using mab50115.
Lane 1: HeLa cell lysates,
Lanes 2 and 3: bengamide treated lysates
(8h and 24h, respectively).

Image 2.