

Datasheet for ABIN1723410

anti-C6 antibody**2** Images[Go to Product page](#)

Overview

Quantity:	50 µg
Target:	C6
Reactivity:	Human
Host:	Mouse
Clonality:	Monoclonal
Conjugate:	This C6 antibody is un-conjugated
Application:	ELISA, Flow Cytometry (FACS), Immunohistochemistry (Paraffin-embedded Sections) (IHC (p))

Product Details

Immunogen:	Purified human C6.
Isotype:	IgG1
Specificity:	Reacts with the C-terminus part of human C6 / Complement C6
Purification:	Purified (protein A)

Target Details

Target:	C6
Abstract:	C6 Products
UniProt:	P13671

Application Details

Application Notes: Working dilution: ELISA, FC, IHC - P (10 µg/mL)

Restrictions: For Research Use only

Handling

Format: Liquid

Concentration: 1 mg/mL

Buffer: BBS, 0.09 % Sodium azide

Preservative: Sodium azide

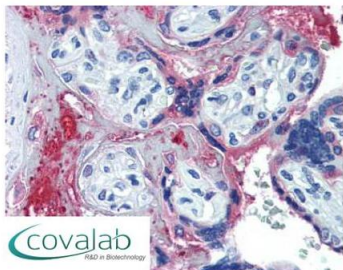
Precaution of Use: This product contains Sodium azide: a POISONOUS AND HAZARDOUS SUBSTANCE which should be handled by trained staff only.

Storage: 4 °C/-20 °C

Storage Comment: +4°C or -20°C, Avoid repeated freezing and thawing. Store undiluted.

Images

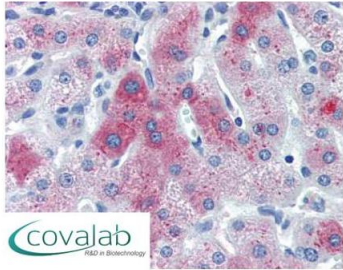
IHC : C6 / Complement C6 (C-Terminus) antibody (mab70551)



Anti-C6 / Complement C6 antibody IHC staining of human placenta. Immunohistochemistry of formalin-fixed, paraffin-embedded tissue after heat-induced antigen retrieval. Antibody mab70551 concentration 10 µg/ml.

Image 1.

**IHC : C6 / Complement C6
(C-Terminus) antibody**
(mab70551)



Anti-C6 / Complement C6 antibody IHC staining of human liver. Immunohistochemistry of formalin-fixed, paraffin-embedded tissue after heat-induced antigen retrieval. Antibody mab70551 concentration 10 ug/ml.

Image 2.