

Datasheet for ABIN1724174

anti-KIF5B antibody**2** Images[Go to Product page](#)

Overview

Quantity:	50 µg
Target:	KIF5B
Reactivity:	Human, Mouse, Rat, Pig
Host:	Mouse
Clonality:	Monoclonal
Conjugate:	This KIF5B antibody is un-conjugated
Application:	Immunohistochemistry (Paraffin-embedded Sections) (IHC (p)), Immunocytochemistry (ICC)

Product Details

Immunogen:	Enriched fraction of porcine brain kinesin.
Clone:	KN-03
Isotype:	IgM
Specificity:	Reacts with porcine KIF5B
Cross-Reactivity:	Mouse (Murine), Rat (Rattus)
Cross-Reactivity (Details):	Cross reacts with human, mouse and rat protein. It stains Western blots of kinesin-enriched preparations.
Purification:	Purified (Thiophilic adsorption)

Target Details

Target:	KIF5B
---------	-------

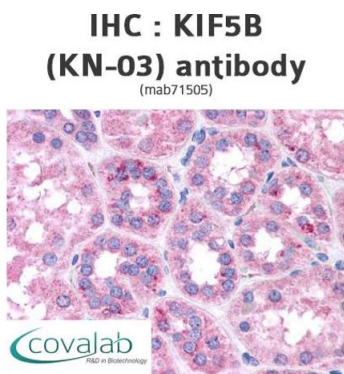
Target Details

Alternative Name:	KIF5B (KIF5B Products)
UniProt:	P33176
Pathways:	Peptide Hormone Metabolism, Ribonucleoprotein Complex Subunit Organization

Application Details

Application Notes:	Working dilution: ICC, IHC-P (10 µg/mL)
Restrictions:	For Research Use only
Handling	
Format:	Liquid
Concentration:	1 mg/mL
Buffer:	PBS, pH 7.4, 15 mM Sodium azide
Preservative:	Sodium azide
Precaution of Use:	This product contains Sodium azide: a POISONOUS AND HAZARDOUS SUBSTANCE which should be handled by trained staff only.
Storage:	4 °C
Storage Comment:	Store at 4°C. Do not freeze.

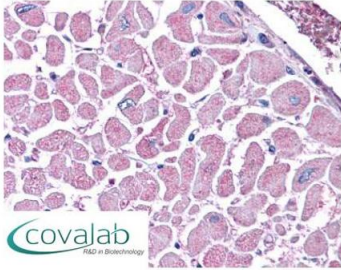
Images



Anti-KIF5B antibody IHC staining of human liver.
Immunohistochemistry of formalin-fixed, paraffin-embedded tissue after heat-induced antigen retrieval. Antibody mab71505 concentration 10 µg/ml.

Image 1.

IHC : KIF5B
(KN-03) antibody
(mab71505)



Anti-KIF5B antibody IHC staining of human heart.
Immunohistochemistry of formalin-fixed,
paraffin-embedded tissue after heat-induced antigen
retrieval. Antibody mab71505 concentration 10 ug/ml.

Image 2.