

Datasheet for ABIN1724634

anti-IL16 antibody[Go to Product page](#)**1** Image

Overview

Quantity:	100 µL
Target:	IL16
Reactivity:	Human
Host:	Mouse
Clonality:	Monoclonal
Conjugate:	This IL16 antibody is un-conjugated
Application:	Western Blotting (WB), ELISA

Product Details

Immunogen:	Purified recombinant fragment of human IL-16 expressed in E. coli.
Clone:	5D8
Isotype:	IgG1
Purification:	purified

Target Details

Target:	IL16
Alternative Name:	IL-16 (IL16 Products)
Background:	Description: Interleukin-16, also known as lymphocyte chemoattractant factor (LCF), is a chemotactic cytokine that stimulates a migratory response in CD4+ lymphocytes, monocytes, and eosinophils through binding to the CD4 receptor . IL-16 induces human T-lymphocyte expression of interleukin 2 receptor and upregulates major histocompatibility complex

Target Details

?molecules on resting human T lymphocyte. It is able to render CD4+ T cells unresponsive to TCR/CD3 stimuli. Moreover, IL-16 inhibits the replication of T cell and monocyte tropic HIV strains in vitro.

Aliases: IL16

Gene ID: 3603

HGNC: 3603

Application Details

Application Notes: ELISA: 1:10000, WB: 1:500 - 1:2000

Restrictions: For Research Use only

Handling

Format: Liquid

Buffer: Ascitic fluid containing 0.03 % sodium azide.

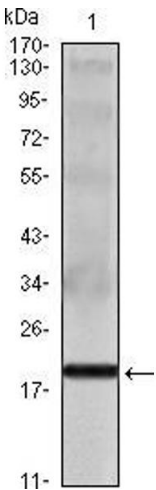
Preservative: Sodium azide

Precaution of Use: This product contains Sodium azide: a POISONOUS AND HAZARDOUS SUBSTANCE which should be handled by trained staff only.

Storage: 4 °C/-20 °C

Storage Comment: 4°C, -20°C for long term storage

Images



Western Blotting

Image 1. Western blot analysis using IL16 mouse mAb against IL16 recombinant protein.