

Datasheet for ABIN1724638
anti-SARS-CoV E2 Glycoprotein antibody



[Go to Product page](#)

1 Image

Overview

Quantity:	100 µL
Target:	SARS-CoV E2 Glycoprotein (SARS-CoV E2)
Reactivity:	SARS Coronavirus (SARS-CoV)
Host:	Mouse
Clonality:	Monoclonal
Conjugate:	This SARS-CoV E2 Glycoprotein antibody is un-conjugated
Application:	ELISA, Western Blotting (WB)

Product Details

Immunogen:	Purified recombinant fragment of SARS-E2 glycoprotein precursor expressed in E. coli.
Clone:	4A6C9
Isotype:	IgG1
Purification:	purified

Target Details

Target:	SARS-CoV E2 Glycoprotein (SARS-CoV E2)
Alternative Name:	SARS-E2 (SARS-CoV E2 Products)
Target Type:	Viral Protein
Background:	Description: SARS (severe acute respiratory syndrome) is caused by a human coronavirus. Human coronaviruses are the major cause of upper respiratory tract illness, such as the

Target Details

common cold, in humans. Coronaviruses are positive-stranded RNA viruses, featuring the largest viral RNA genomes known to date (27-31 kb). The complete sequence of the SARS virus release the coronavirus contains 25 open reading frames. SARS-E2 glycoprotein precursor is a 139- kDa glycoprotein. It contains a superantigen between residues 690 through 1050 which has relationship to T-cell Receptor alpha-beta V chain protein.

Aliases: N/A

Application Details

Application Notes: ELISA: 1:10000, WB: 1:500 - 1:2000

Restrictions: For Research Use only

Handling

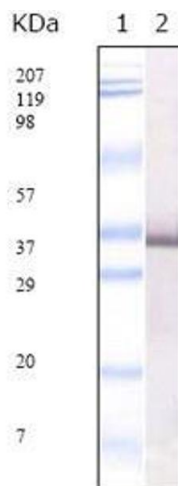
Format: Liquid

Buffer: Subclonal supernatant.

Storage: 4 °C/-20 °C

Storage Comment: 4°C, -20°C for long term storage

Images



Western Blotting

Image 1. Western blot analysis using SARS-E2GP3 mouse mAb against SARS-E2GP3 recombinant protein.