

Datasheet for ABIN1724653
anti-CSNK1A1 antibody[Go to Product page](#)

2 Images

Overview

Quantity:	100 µL
Target:	CSNK1A1
Reactivity:	Human
Host:	Mouse
Clonality:	Monoclonal
Conjugate:	This CSNK1A1 antibody is un-conjugated
Application:	Western Blotting (WB), ELISA, Immunohistochemistry (IHC)

Product Details

Immunogen:	Purified recombinant fragment of CK1 expressed in E. coli.
Clone:	3C10F7
Isotype:	IgG1
Purification:	purified

Target Details

Target:	CSNK1A1
Alternative Name:	CK1 (CSNK1A1 Products)
Background:	Description: CK1 (also designated Cytokeratin 1 or KRT1),with 644-amino acid protein (about 70 kDa), is a member of the keratin family. Cytokeratins play a critical role in differentiation and tissue specialization, and they function to maintain the overall structural integrity of epithelial cells.CK1 consist of basic or neutral proteins which are arranged in pairs of heterotypic keratin

Target Details

chains coexpressed during differentiation of simple and stratified epithelial tissues. CK1 is specifically expressed in the spinous and granular layers of the epidermis with family member KRT10 and mutations in these genes have been associated with bullous congenital ichthyosiform erythroderma.

Aliases: K1, CK1, EHK, EHK1, EPPK, KRT1A, NEPPK

Gene ID: 3848

HGNC: 3848

Pathways: [WNT Signaling](#), [Hedgehog Signaling](#)

Application Details

Application Notes: ELISA: 1:10000, WB: 1:500 - 1:2000, IHC: 1:200 - 1:1000

Restrictions: For Research Use only

Handling

Format: Liquid

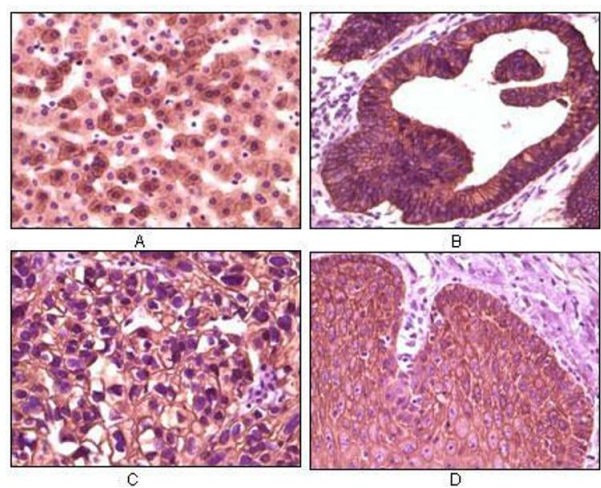
Buffer: Ascitic fluid containing 0.03 % sodium azide.

Preservative: Sodium azide

Precaution of Use: This product contains Sodium azide: a POISONOUS AND HAZARDOUS SUBSTANCE which should be handled by trained staff only.

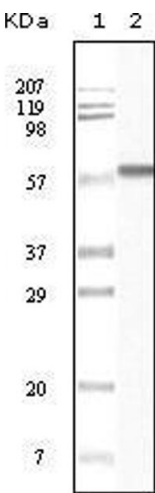
Storage: 4 °C/-20 °C

Storage Comment: 4°C, -20°C for long term storage



Immunohistochemistry

Image 1. Immunohistochemical analysis of paraffin-embedded human liver tissue (A), colon carcinoma (B), lung carcinoma (C) and esophagus tissue (D), showing membrane localization using CK1 mouse mAb with DAB staining.



Western Blotting

Image 2. Western blot analysis using CK1 mouse mAb against truncated CK1 recombinant protein.