

Datasheet for ABIN1724659

anti-IKBKB antibody[2 Images](#)[2 Publications](#)[Go to Product page](#)

Overview

Quantity:	100 µL
Target:	IKBKB
Reactivity:	Human
Host:	Mouse
Clonality:	Monoclonal
Conjugate:	This IKBKB antibody is un-conjugated
Application:	ELISA, Western Blotting (WB), Immunohistochemistry (IHC)

Product Details

Immunogen:	Purified recombinant fragment of IKBKB expressed in E. coli.
Clone:	10A2C5B3
Isotype:	IgG1
Purification:	purified

Target Details

Target:	IKBKB
Alternative Name:	IKBKB (IKBKB Products)
Background:	Description: IKBKB(Inhibitor of kappa light polypeptide gene enhancer in B-cells, kinase beta, also called IKK2/IKKB), is a member of the IKK complex which is composed of IKK-alpha, IKK-beta, IKK-gamma and IKAP. Phosphorylation of I-Kappa-B on a serine residue by the IKK complex frees NF-kB from I-Kappa-B and marks it for degradation via ubiquitination. IKK-beta

Target Details

has been shown to activate NF- κ B and phosphorylate I κ B-alpha and beta. Phosphorylation of 2 sites at the activation loop of IKK-beta is essential for activation of IKK by TNF and IL1. Once activated, IKK-beta autophosphorylates which in turn decreases IKK activity and prevents prolonged activation of the inflammatory response. Additionally, IKK-beta activity can also be regulated by MEKK-1.

Aliases: IKBKB

Gene ID: 3551

HGNC: 3551

Pathways: [NF-kappaB Signaling](#), [RTK Signaling](#), [TCR Signaling](#), [TLR Signaling](#), [Fc-epsilon Receptor Signaling Pathway](#), [Neurotrophin Signaling Pathway](#), [Activation of Innate immune Response](#), [Production of Molecular Mediator of Immune Response](#), [Hepatitis C](#), [Toll-Like Receptors Cascades](#), [BCR Signaling](#), [Ubiquitin Proteasome Pathway](#), [S100 Proteins](#)

Application Details

Application Notes: ELISA: 1:10000, WB: 1:500 - 1:2000, IHC: 1:200 - 1:1000

Restrictions: For Research Use only

Handling

Format: Liquid

Buffer: Ascitic fluid containing 0.03 % sodium azide.

Preservative: Sodium azide

Precaution of Use: This product contains Sodium azide: a POISONOUS AND HAZARDOUS SUBSTANCE which should be handled by trained staff only.

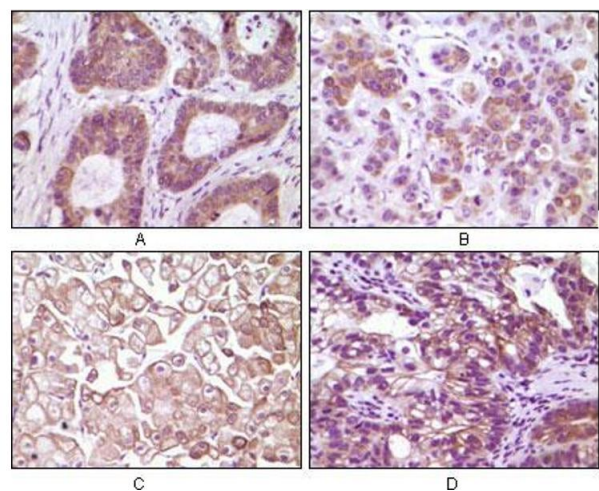
Storage: 4 °C/-20 °C

Storage Comment: 4°C, -20°C for long term storage

Publications

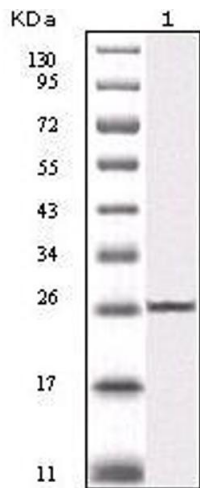
Product cited in: Yoshida, Ishikawa, Niitsu, Nakazato, Watanabe, Shiraishi, Shiina, Hashimoto, Kanahara, Hasegawa, Enohara, Kimura, Iyo, Hashimoto: "Decreased serum levels of mature brain-derived neurotrophic factor (BDNF), but not its precursor proBDNF, in patients with major depressive disorder." in: **PLoS ONE**, Vol. 7, Issue 8, pp. e42676, (2012) ([PubMed](#)).

Images



Immunohistochemistry

Image 1. Immunohistochemical analysis of paraffin-embedded human colon carcinoma(A), breast carcinoma(B), kidney cell carcinoma(C), bladder carcinoma tumor(D), showing membrane and cytoplasmic localization using IKBKB mouse mAb with DAB staining.



Western Blotting

Image 2. Western blot analysis using IKBKB mouse mAb against truncated IKBKB recombinant protein (1).