

Datasheet for ABIN1724664

anti-S100A10 antibody

3 Images

3 Publications

[Go to Product page](#)

Overview

Quantity:	100 µL
Target:	S100A10
Reactivity:	Human
Host:	Mouse
Clonality:	Monoclonal
Conjugate:	This S100A10 antibody is un-conjugated
Application:	Western Blotting (WB), Immunohistochemistry (IHC), ELISA, Immunocytochemistry (ICC)

Product Details

Immunogen:	Purified recombinant fragment of human P11 expressed in E. coli.
Clone:	4E7E10
Isotype:	IgG1
Purification:	purified

Target Details

Target:	S100A10
Alternative Name:	S100A10/P11 (S100A10 Products)
Background:	Description: S100 calcium binding protein A10 (S100A10/P11), it is a member of the S100 family of proteins containing 2 EF-hand calcium-binding motifs. S100 proteins are localized in the cytoplasm and/or nucleus of a wide range of cells, and involved in the regulation of a number of cellular processes such as cell cycle progression and differentiation. S100 genes

Target Details

include at least 13 members which are located as a cluster on chromosome 1q21. This protein may function in exocytosis and endocytosis.

Aliases: S100A10, P11, PP11, PRSS26

Molecular Weight: 11 kDa

Gene ID: 6281

HGNC: 6281

Pathways: [S100 Proteins](#)

Application Details

Application Notes: ELISA: 1:10000, WB: 1:500 - 1:2000, IHC: 1:200 - 1:1000, ICC: 1:200 - 1:1000

Restrictions: For Research Use only

Handling

Format: Liquid

Buffer: Ascitic fluid containing 0.03 % sodium azide.

Preservative: Sodium azide

Precaution of Use: This product contains Sodium azide: a POISONOUS AND HAZARDOUS SUBSTANCE which should be handled by trained staff only.

Storage: 4 °C/-20 °C

Storage Comment: 4°C, -20°C for long term storage

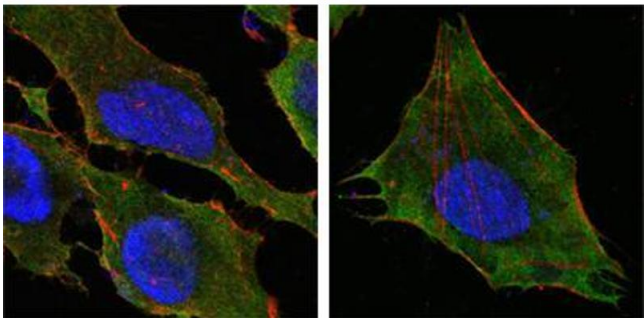
Publications

Product cited in: Svenningsson, Greengard: "p11 (S100A10)--an inducible adaptor protein that modulates neuronal functions." in: **Current opinion in pharmacology**, Vol. 7, Issue 1, pp. 27-32, (2007) ([PubMed](#)).

Santamaria-Kisiel, Rintala-Dempsey, Shaw: "Calcium-dependent and -independent interactions of the S100 protein family." in: **The Biochemical journal**, Vol. 396, Issue 2, pp. 201-14, (2006) ([PubMed](#)).

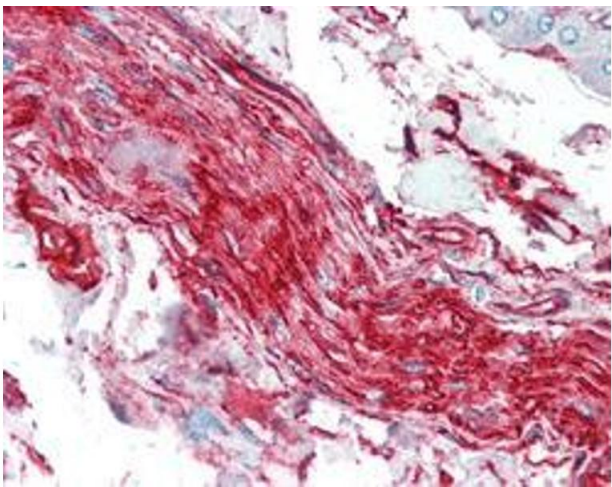
Rust, Visser, van der Leij, Harms, Blokzijl, Deloulme, van der Vlies, Kamps, Kok, Lim, Poppema,

van den Berg: "High expression of calcium-binding proteins, S100A10, S100A11 and CALM2 in anaplastic large cell lymphoma." in: **British journal of haematology**, Vol. 131, Issue 5, pp. 596-608, (2005) ([PubMed](#)).



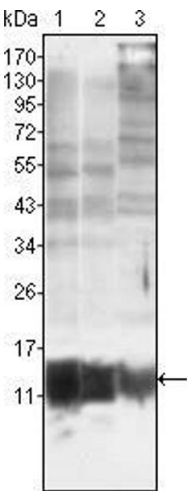
Immunofluorescence

Image 1. Confocal immunofluorescence analysis of Hela (left) and L-02 (right) cells using S100A10/P11 mouse mAb(green). Red: Actin filaments have been labeled with DY-554 phalloidin. Blue: DRAQ5 fluorescent DNA dye.



Immunohistochemistry

Image 2. Immunohistochemical analysis of paraffin-embedded human nerve and ganglion cells using S100A10/P11 mouse mAb.



Western Blotting

Image 3. Western blot analysis using S100A10/P11 mouse mAb against MCF-7 (1), HepG2 (2) and Hela (3).