

Datasheet for ABIN1724669
anti-RPS6KA1 antibody



[Go to Product page](#)

3 Images

Overview

Quantity:	100 µL
Target:	RPS6KA1
Reactivity:	Human
Host:	Mouse
Clonality:	Monoclonal
Conjugate:	This RPS6KA1 antibody is un-conjugated
Application:	Western Blotting (WB), ELISA, Immunohistochemistry (IHC)

Product Details

Immunogen:	Purified recombinant fragment of human RSK1 expressed in E. coli.
Clone:	10B1D7A9
Isotype:	IgG2b
Purification:	purified

Target Details

Target:	RPS6KA1
Alternative Name:	RSK1 (RPS6KA1 Products)
Background:	Description: Rsk1 is a member of a family of 90 kDa ribosomal protein S6 kinases, which includes Rsk1, Rsk2 and Rsk3. These are broadly expressed serine / threonine protein kinases activated in response to mitogenic stimuli, including extracellular signal regulated protein kinases Erk1 and Erk2. Rsk1 is activated by MAPK in vitro and in vivo via phosphorylation.

Target Details

Active Rsk's appear to play a major role in transcriptional regulation by translocating to the nucleus and phosphorylating c-Fos and CREB. RSK proteins possess two separate kinase domains, the C terminal kinase domain and the N terminal kinase domain, separated by a linker region containing a hydrophobic motif. RSK is activated by many stimuli including growth factors, phorbol esters, cAMP, heat shock, and irradiation.

Aliases: RSK, HU-1, RSK1, MAPKAPK1A, RPS6KA1

Gene ID: 6195

HGNC: 6195

Pathways: [MAPK Signaling](#), [Neurotrophin Signaling Pathway](#), [Activation of Innate immune Response](#), [Toll-Like Receptors Cascades](#)

Application Details

Application Notes: ELISA: 1:10000, WB: 1:500 - 1:2000, IHC: 1:200 - 1:1000

Restrictions: For Research Use only

Handling

Format: Liquid

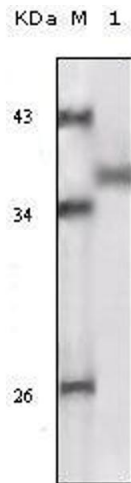
Buffer: Ascitic fluid containing 0.03 % sodium azide.

Preservative: Sodium azide

Precaution of Use: This product contains Sodium azide: a POISONOUS AND HAZARDOUS SUBSTANCE which should be handled by trained staff only.

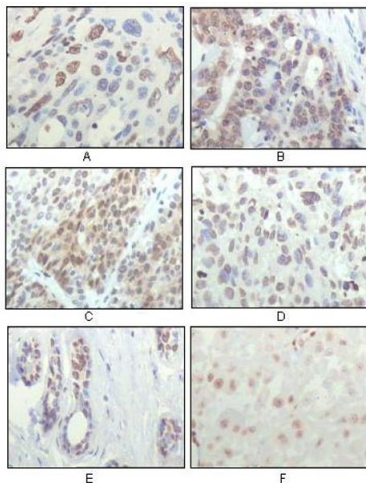
Storage: 4 °C/-20 °C

Storage Comment: 4°C, -20°C for long term storage



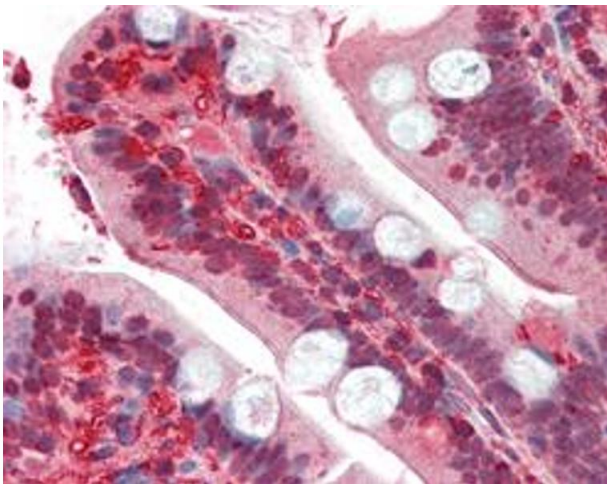
Western Blotting

Image 1. Western blot analysis using RSK1 mouse mAb against truncated RSK1 recombinant protein.



Immunohistochemistry

Image 2. Immunohistochemical analysis of paraffin-embedded human esophageal squamous cell carcinoma (A), colon adenocarcinoma (B), liver carcinoma (C), skin carcinoma (D), breast ductal tumor (E) and brain tumor (F), showing nuclear localization using RSK1 mouse mAb with DAB staining.



Immunohistochemistry

Image 3. Immunohistochemical analysis of paraffin-embedded human small intestine tissues using RSK1 mouse mAb.