

Datasheet for ABIN1724683  
**anti-SORL1 antibody (AA 2159-2214)**[Go to Product page](#)**1** Image**3** Publications

## Overview

Quantity:	100 µL
Target:	SORL1
Binding Specificity:	AA 2159-2214
Reactivity:	Human
Host:	Mouse
Clonality:	Monoclonal
Conjugate:	This SORL1 antibody is un-conjugated
Application:	ELISA, Western Blotting (WB)

## Product Details

Immunogen:	Purified recombinant fragment of SORL1 (aa2159-2214) expressed in E. coli.
Clone:	7D7B11
Isotype:	IgG1
Purification:	purified

## Target Details

Target:	SORL1
Alternative Name:	SORL1 ( <a href="#">SORL1 Products</a> )
Background:	Description: SORL1 (sortilin-related receptor, L A repeats containing) also known as sorting protein-related receptor containing LDLR class A (SorLA), is a Type I membrane protein that

## Target Details

may be involved in cell-cell interaction. SorLA, a single transmembrane receptor, binds LDL and transports it into cells by endocytosis. SorLA is synthesized as a proreceptor which is processed to the mature form by a furin-like propeptidase. It can also bind to RAP (receptor-associated protein). SorLA is a multifunctional endocytosis receptor important in lipoprotein and protease uptake. The N-terminal propeptide, which is removed, can be cleaved by furin or homologous proteases. Endogenous SorLA binds the neuropeptide head activator (HA) and is important for HA signaling and function. The gene encoding for the protein maps to chromosome 8p23.1. SorLA is expressed mainly in brain (cerebral cortex, cerebellum and the occipital pole), but can also be found in liver, spinal cord, kidney, testis and pancreas.

Aliases: SORL1

Gene ID: 6653

HGNC: 6653

Pathways: [Smooth Muscle Cell Migration](#)

## Application Details

Application Notes: ELISA: 1:10000, WB: 1:500 - 1:2000

Restrictions: For Research Use only

## Handling

Format: Liquid

Buffer: Ascitic fluid containing 0.03 % sodium azide.

Preservative: Sodium azide

Precaution of Use: This product contains Sodium azide: a POISONOUS AND HAZARDOUS SUBSTANCE which should be handled by trained staff only.

Storage: 4 °C/-20 °C

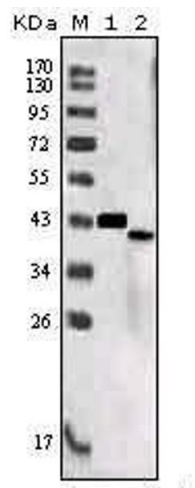
Storage Comment: 4°C, -20°C for long term storage

## Publications

Product cited in: Yoshida, Ishikawa, Niitsu, Nakazato, Watanabe, Shiraishi, Shiina, Hashimoto, Kanahara, Hasegawa, Enohara, Kimura, Iyo, Hashimoto: "Decreased serum levels of mature brain-derived neurotrophic factor (BDNF), but not its precursor proBDNF, in patients with major depressive

disorder." in: **PLoS ONE**, Vol. 7, Issue 8, pp. e42676, (2012) ([PubMed](#)).

Images



Western Blotting

**Image 1.** Western blot analysis using SORL1 mouse mAb against truncated SORL1 recombinant protein (1) and SORL1 (aa2159-2214)-hlgGfc transfected CHO-K1 cell lysate (2).