



[Go to Product page](#)

Datasheet for ABIN1724726
anti-MEK2 antibody

3 Images

Overview

Quantity:	100 µL
Target:	MEK2 (MAP2K2)
Reactivity:	Human, Mouse, Rat
Host:	Mouse
Clonality:	Monoclonal
Application:	Western Blotting (WB), ELISA, Flow Cytometry (FACS), Immunocytochemistry (ICC)

Product Details

Immunogen:	Purified recombinant fragment of human MAP2K2 expressed in E. coli.
Clone:	7F5
Isotype:	IgG1
Purification:	purified

Target Details

Target:	MEK2 (MAP2K2)
Alternative Name:	MAP2K2 (MAP2K2 Products)
Background:	Description: MAP2K2, also called MEK2, it is a dual specificity protein kinase that belongs to the MAP kinase kinase family. This kinase is known to play a critical role in mitogen growth factor signal transduction. It phosphorylates and thus activates MAPK1/ERK2 and MAPK2/ERK3. The activation of this kinase itself is dependent on the Ser/Thr phosphorylation by MAP kinase kinase kinases. Mutations in this gene cause cardiofaciocutaneous syndrome (CFC syndrome),

Target Details

a disease characterized by heart defects, mental retardation, and distinctive facial features similar to those found in Noonan syndrome. The inhibition or degradation of this kinase is also found to be involved in the pathogenesis of Yersinia and anthrax.

Aliases: MEK2, MKK2, MAPKK2

Molecular Weight: 44 kDa

Gene ID: 5605

HGNC: 5605

Pathways: [MAPK Signaling](#), [RTK Signaling](#), [Fc-epsilon Receptor Signaling Pathway](#), [Neurotrophin Signaling Pathway](#), [Activation of Innate immune Response](#), [Toll-Like Receptors Cascades](#), [Signaling of Hepatocyte Growth Factor Receptor](#), [BCR Signaling](#)

Application Details

Application Notes: ELISA: 1:10000, WB: 1:500 - 1:2000, ICC: 1:200 - 1:1000, FCM: 1:200 - 1:400

Restrictions: For Research Use only

Handling

Format: Liquid

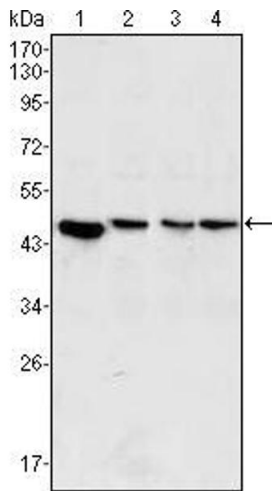
Buffer: Ascitic fluid containing 0.03 % sodium azide.

Preservative: Sodium azide

Precaution of Use: This product contains Sodium azide: a POISONOUS AND HAZARDOUS SUBSTANCE which should be handled by trained staff only.

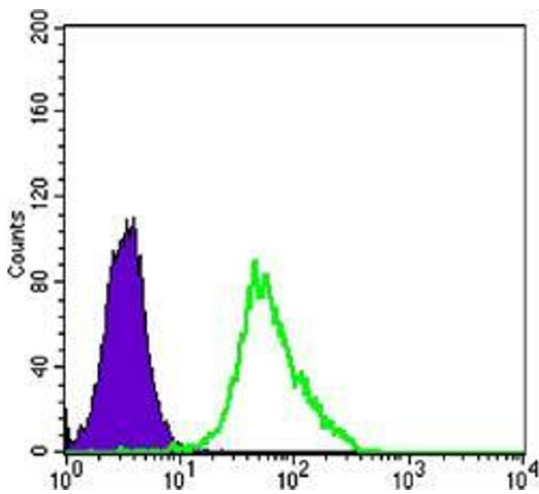
Storage: 4 °C/-20 °C

Storage Comment: 4°C, -20°C for long term storage



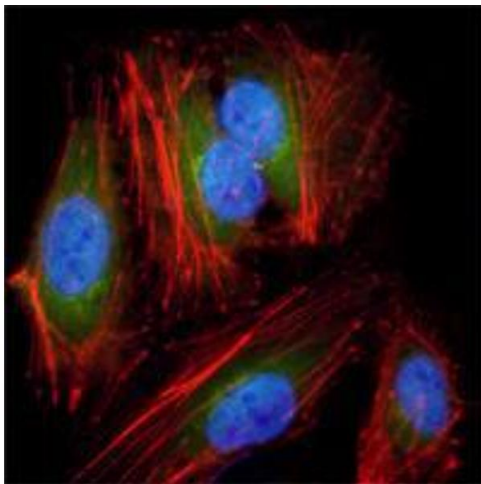
Western Blotting

Image 1. Western blot analysis using MAP2K2 mouse mAb against PC-12 (1), Jurkat (2), HeLa (3) and NIH/3T3 (4) cell lysate.



Flow Cytometry

Image 2. Flow cytometric analysis of HeLa cells using anti-MAP2K2 mAb (green) and negative control (purple).



Immunofluorescence

Image 3. Immunofluorescence analysis of HeLa cells using anti-MAP2K2 mAb (green). Red: Actin filaments have been labeled with DY-554 phalloidin. Blue: DRAQ5 fluorescent DNA dye.