

Datasheet for ABIN1724743  
**anti-GLUT4 antibody (AA 224-353)**[Go to Product page](#)

9 Images

1 Publication

## Overview

Quantity:	100 µL
Target:	GLUT4 (SLC2A4)
Binding Specificity:	AA 224-353
Reactivity:	Human, Mouse
Host:	Mouse
Clonality:	Monoclonal
Conjugate:	This GLUT4 antibody is un-conjugated
Application:	Western Blotting (WB), Immunohistochemistry (IHC), ELISA, Immunocytochemistry (ICC), Flow Cytometry (FACS)

## Product Details

Immunogen:	Purified recombinant fragment of human SLC2A4 (AA: 224-353 ) expressed in E. coli.
Clone:	3G10A3
Isotype:	IgG2b
Purification:	purified

## Target Details

Target:	GLUT4 (SLC2A4)
Alternative Name:	SLC2A4 ( <a href="#">SLC2A4 Products</a> )
Background:	Description: This gene is a member of the solute carrier family 2 (facilitated glucose

## Target Details

transporter) family and encodes a protein that functions as an insulin-regulated facilitative glucose transporter. In the absence of insulin, this integral membrane protein is sequestered within the cells of muscle and adipose tissue. Within minutes of insulin stimulation, the protein moves to the cell surface and begins to transport glucose across the cell membrane. Mutations in this gene have been associated with noninsulin-dependent diabetes mellitus (NIDDM). , , ,

Aliases: GLUT4

Molecular Weight: 54.8 kDa

Gene ID: 6517

HGNC: 6517

Pathways: [AMPK Signaling](#), [Carbohydrate Homeostasis](#), [Proton Transport](#), [Brown Fat Cell Differentiation](#), [Warburg Effect](#)

## Application Details

Application Notes: ELISA: 1:10000, WB: 1:500 - 1:2000, IHC: 1:200 - 1:1000, ICC: 1:200 - 1:1000, FCM: 1:200 - 1:400

Restrictions: For Research Use only

## Handling

Format: Liquid

Buffer: Ascitic fluid containing 0.03 % sodium azide.

Preservative: Sodium azide

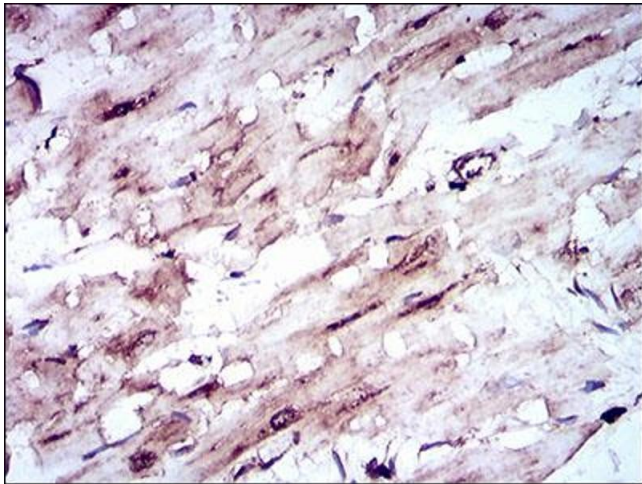
Precaution of Use: This product contains Sodium azide: a POISONOUS AND HAZARDOUS SUBSTANCE which should be handled by trained staff only.

Storage: 4 °C/-20 °C

Storage Comment: 4°C, -20°C for long term storage

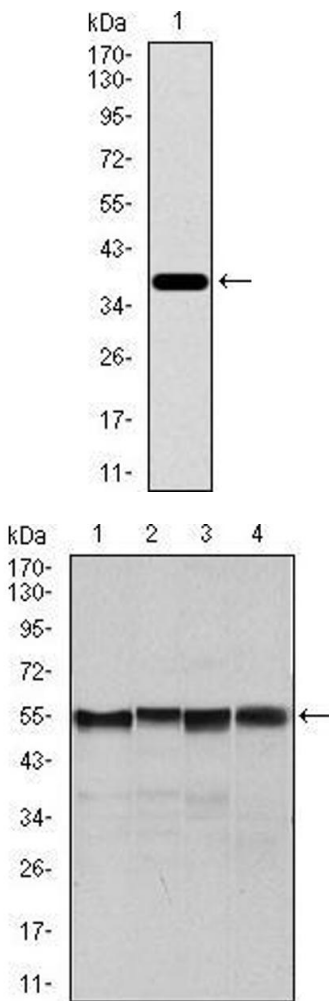
## Publications

Product cited in: Yoshida, Ishikawa, Niitsu, Nakazato, Watanabe, Shiraishi, Shiina, Hashimoto, Kanahara, Hasegawa, Enohara, Kimura, Iyo, Hashimoto: "Decreased serum levels of mature brain-derived neurotrophic factor (BDNF), but not its precursor proBDNF, in patients with major depressive disorder." in: **PLoS ONE**, Vol. 7, Issue 8, pp. e42676, (2012) ([PubMed](#)).



### Immunohistochemistry

**Image 1.** Immunohistochemical analysis of paraffin-embedded cardiac muscle tissues using SLC2A4 mouse mAb with DAB staining.



### Western Blotting

**Image 2.** Western blot analysis using SLC2A4 mAb against human SLC2A4 recombinant protein. (Expected MW is 39.9 kDa)

### Western Blotting

**Image 3.** Western blot analysis using SLC2A4 mouse mAb against NIH3T3 (1), 3T3L1 (2), MCF-7 (4) cell lysate and Mouse heart (3) tissue lysate.

Please check the [product details page](#) for more images. Overall 9 images are available for ABIN1724743.