



[Go to Product page](#)

Datasheet for ABIN1724766

anti-CBX8 antibody (AA 17-222)

4 Images

1 Publication

Overview

Quantity:	0.1 mg
Target:	CBX8
Binding Specificity:	AA 17-222
Reactivity:	Human
Host:	Mouse
Clonality:	Monoclonal
Conjugate:	This CBX8 antibody is un-conjugated
Application:	Western Blotting (WB), ELISA, Flow Cytometry (FACS)

Product Details

Immunogen:	Purified recombinant fragment of human CBX8 (AA: 17-222) expressed in E. coli.
Clone:	9C3D4
Isotype:	IgG1
Purification:	purified

Target Details

Target:	CBX8
Alternative Name:	CBX8 (CBX8 Products)
Background:	Description: Chromobox homolog 8 (CBX8), a Polycomb Group protein that interacts with MLL-AF9 and TIP60, plays an essential role in MLL-AF9 transcriptional regulation and

Target Details

leukemogenesis. CBX8, which is part of one of the PRC1 complexes, regulates proliferation of diploid human and mouse fibroblasts through direct binding to the INK4A-ARF locus. , ,
Aliases: PC3, RC1

Molecular Weight: 43.4 kDa

Gene ID: 57332

HGNC: 57332

Application Details

Application Notes: ELISA: 1:10000, WB: 1:500 - 1:2000, FCM: 1:200 - 1:400

Restrictions: For Research Use only

Handling

Format: Liquid

Buffer: Purified antibody in PBS with 0.05 % sodium azide

Preservative: Sodium azide

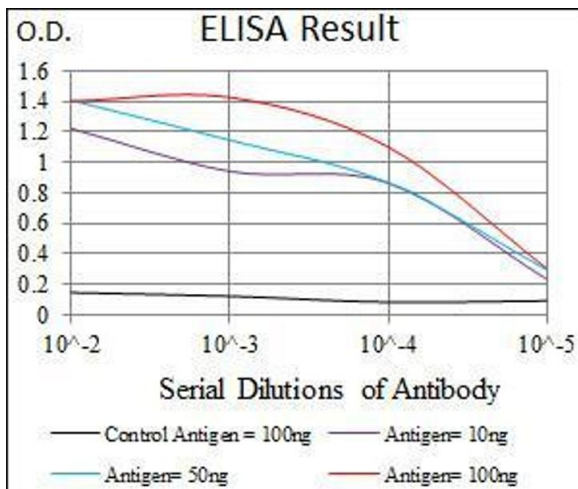
Precaution of Use: This product contains Sodium azide: a POISONOUS AND HAZARDOUS SUBSTANCE which should be handled by trained staff only.

Storage: 4 °C/-20 °C

Storage Comment: 4°C, -20°C for long term storage

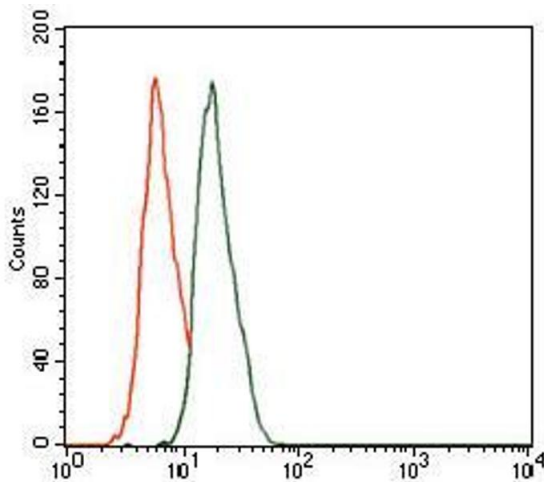
Publications

Product cited in: Yoshida, Ishikawa, Niitsu, Nakazato, Watanabe, Shiraishi, Shiina, Hashimoto, Kanahara, Hasegawa, Enohara, Kimura, Iyo, Hashimoto: "Decreased serum levels of mature brain-derived neurotrophic factor (BDNF), but not its precursor proBDNF, in patients with major depressive disorder." in: **PLoS ONE**, Vol. 7, Issue 8, pp. e42676, (2012) ([PubMed](#)).



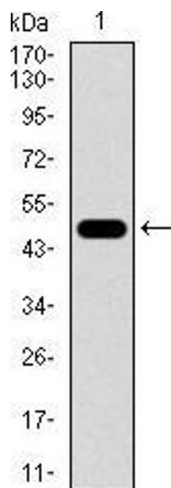
ELISA

Image 1. Black line: Control Antigen (100 ng), Purple line: Antigen(10 ng), Blue line: Antigen (50 ng), Red line: Antigen (100 ng),



Flow Cytometry

Image 2. Flow cytometric analysis of HeLa cells using CBX8 mouse mAb (green) and negative control (red).



Western Blotting

Image 3. Western blot analysis using CBX8 mAb against human CBX8 recombinant protein. (Expected MW is 49.5 kDa)

Please check the [product details page](#) for more images. Overall 4 images are available for ABIN1724766.