



Datasheet for ABIN1724767
anti-MAP1LC3A antibody (AA 1-121)



[Go to Product page](#)

6 Images

2 Publications

Overview

Quantity:	100 µL
Target:	MAP1LC3A
Binding Specificity:	AA 1-121
Reactivity:	Human
Host:	Mouse
Clonality:	Monoclonal
Conjugate:	This MAP1LC3A antibody is un-conjugated
Application:	Western Blotting (WB), ELISA, Immunohistochemistry (IHC), Flow Cytometry (FACS)

Product Details

Immunogen:	Purified recombinant fragment of human MAP1LC3A (AA: 1-121) expressed in E. Coli.
Clone:	5B10D8
Isotype:	IgG1

Target Details

Target:	MAP1LC3A
Alternative Name:	MAP1LC3A (MAP1LC3A Products)
Background:	MAP1A and MAP1B are microtubule-associated proteins which mediate the physical interactions between microtubules and components of the cytoskeleton. MAP1A and MAP1B each consist of a heavy chain subunit and multiple light chain subunits. The protein encoded by this gene is one of the light chain subunits and can associate with either MAP1A or MAP1B.

Target Details

Two transcript variants encoding different isoforms have been found for this gene. The expression of variant 1 is suppressed in many tumor cell lines, suggesting that may be involved in carcinogenesis. , ,

Molecular Weight: 14.3 kDa

Gene ID: 84557

HGNC: 84557

Pathways: [Autophagy](#)

Application Details

Application Notes: Recommended Dilution:
ELISA: 1/10000
WB: 1/500 - 1/2000
IHC: 1/200 - 1/1000
FCM: 1/200 - 1/400

Restrictions: For Research Use only

Handling

Format: Liquid

Buffer: Ascitic fluid containing 0.03 % sodium azide.

Preservative: Sodium azide

Precaution of Use: This product contains sodium azide: a POISONOUS AND HAZARDOUS SUBSTANCE which should be handled by trained staff only.

Storage: 4 °C/-20 °C

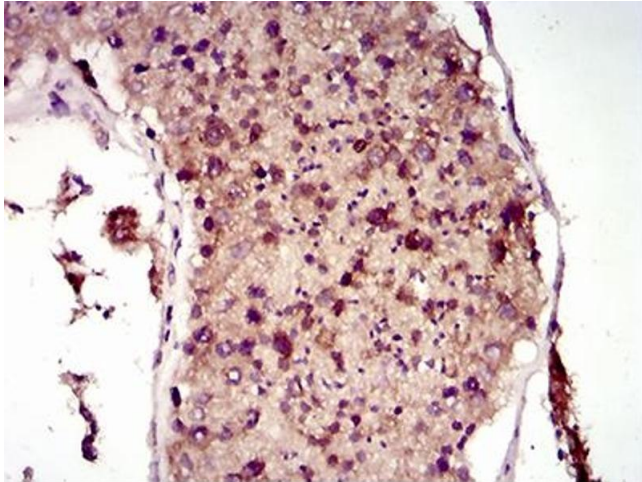
Storage Comment: Store at 4 °C or at -20 °C for long term.

Publications

Product cited in: Jiang, Shao, Wang, Yan, Liu: "Decreased expression of Beclin-1 and LC3 in human lung cancer." in: **Molecular biology reports**, Vol. 39, Issue 1, pp. 259-67, (2011) ([PubMed](#)).

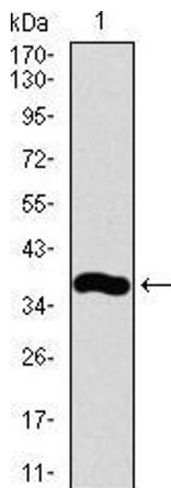
Han, Sun, Wang, Cai, Lou, Sun, Zhao: "Overexpression of microtubule-associated protein-1 light chain 3 is associated with melanoma metastasis and vasculogenic mimicry." in: **The Tohoku**

Images



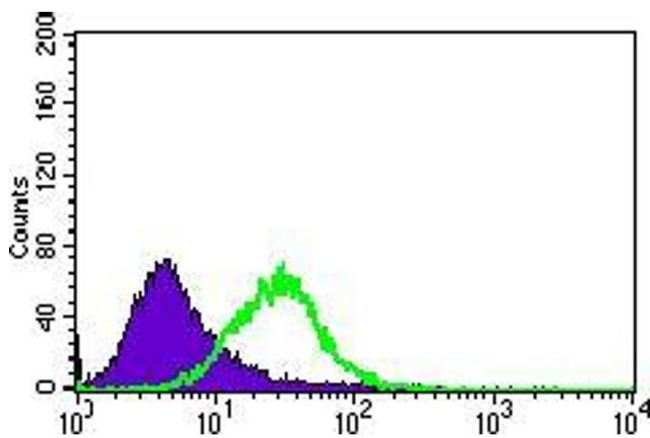
Immunohistochemistry

Image 1. Immunohistochemical analysis of paraffin-embedded testis tissues using MAP1LC3A mouse mAb with DAB staining.



Western Blotting

Image 2. Western blot analysis using MAP1LC3A mAb against human MAP1LC3A recombinant protein. (Expected MW is 39.8 kDa)



Flow Cytometry

Image 3. Flow cytometric analysis of HeLa cells using MAP1LC3A mouse mAb (green) and negative control (purple).

Please check the [product details page](#) for more images. Overall 6 images are available for ABIN1724767.