

Datasheet for ABIN1724783
anti-PDE1B antibody (AA 370-536)

5 Images

1 Publication

[Go to Product page](#)

Overview

Quantity:	100 µL
Target:	PDE1B
Binding Specificity:	AA 370-536
Reactivity:	Human, Mouse, Rat
Host:	Mouse
Clonality:	Monoclonal
Conjugate:	This PDE1B antibody is un-conjugated
Application:	Western Blotting (WB), ELISA, Flow Cytometry (FACS)

Product Details

Immunogen:	Purified recombinant fragment of human PDE1B (AA: 370-536) expressed in E. coli.
Clone:	10B10B12
Isotype:	IgG1
Purification:	purified

Target Details

Target:	PDE1B
Alternative Name:	PDE1B (PDE1B Products)
Background:	Description: The protein encoded by this gene belongs to the cyclic nucleotide phosphodiesterase (PDE) family, and PDE1 subfamily. Members of the PDE1 family are

Target Details

calmodulin-dependent PDEs that are stimulated by a calcium-calmodulin complex. This PDE has dual-specificity for the second messengers, cAMP and cGMP, with a preference for cGMP as a substrate. cAMP and cGMP function as key regulators of many important physiological processes. Alternatively spliced transcript variants encoding different isoforms have been described for this gene. , ,

Aliases: PDE1B1, PDES1B

Molecular Weight: 61.4 kDa

Gene ID: 5153

HGNC: 5153

Pathways: [Neurotrophin Signaling Pathway](#), [cAMP Metabolic Process](#), [G-protein mediated Events](#), [Interaction of EGFR with phospholipase C-gamma](#)

Application Details

Application Notes: ELISA: 1:10000, WB: 1:500 - 1:2000, FCM: 1:200 - 1:400

Restrictions: For Research Use only

Handling

Format: Liquid

Buffer: Ascitic fluid containing 0.03 % sodium azide.

Preservative: Sodium azide

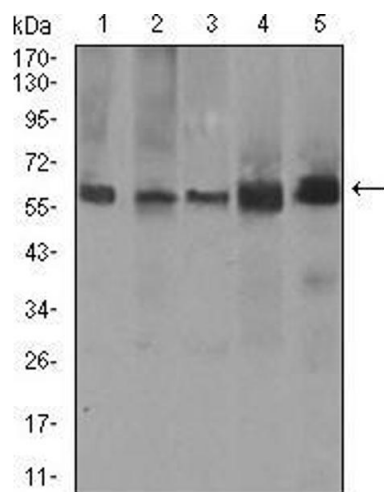
Precaution of Use: This product contains Sodium azide: a POISONOUS AND HAZARDOUS SUBSTANCE which should be handled by trained staff only.

Storage: 4 °C/-20 °C

Storage Comment: 4°C, -20°C for long term storage

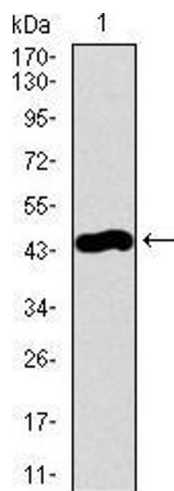
Publications

Product cited in: Nayernia, Adham, Burkhardt-Göttges, Neesen, Rieche, Wolf, Sancken, Kleene, Engel: "Asthenozoospermia in mice with targeted deletion of the sperm mitochondrion-associated cysteine-rich protein (Smcp) gene." in: **Molecular and cellular biology**, Vol. 22, Issue 9, pp. 3046-52, (2002) ([PubMed](#)).



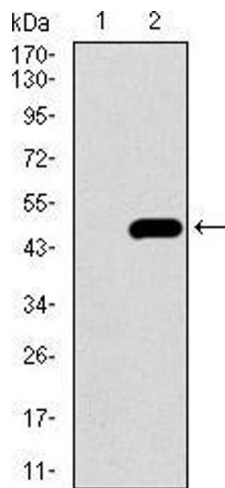
Western Blotting

Image 1. Western blot analysis using PDE1B mouse mAb against A549 (1), SK-MES-1 (2), PC-12 (3), NIH3T3 (4), and 3T3-L1 (5) cell lysate.



Western Blotting

Image 2. Western blot analysis using PDE1B mAb against human PDE1B recombinant protein. (Expected MW is 44.4 kDa)



Western Blotting

Image 3. Western blot analysis using PDE1B mAb against HEK293 (1) and PDE1B (AA: 370-536)-hlgGfC transfected HEK293 (2) cell lysate.

Please check the [product details page](#) for more images. Overall 5 images are available for ABIN1724783.