



[Go to Product page](#)

Datasheet for ABIN1724795
anti-ALDH2 antibody (AA 317-517)

8 Images

2 Publications

Overview

Quantity:	100 µL
Target:	ALDH2
Binding Specificity:	AA 317-517
Reactivity:	Human, Mouse, Rat
Host:	Mouse
Clonality:	Monoclonal
Conjugate:	This ALDH2 antibody is un-conjugated
Application:	Western Blotting (WB), Immunohistochemistry (IHC), ELISA, Flow Cytometry (FACS), Immunocytochemistry (ICC)

Product Details

Immunogen:	Purified recombinant fragment of human ALDH2 (AA: 317-517) expressed in E. coli.
Clone:	4G6A3
Isotype:	IgG1
Purification:	purified

Target Details

Target:	ALDH2
Alternative Name:	ALDH2 (ALDH2 Products)
Background:	Description: This protein belongs to the aldehyde dehydrogenase family of proteins. Aldehyde

Target Details

dehydrogenase is the second enzyme of the major oxidative pathway of alcohol metabolism. Two major liver isoforms of aldehyde dehydrogenase, cytosolic and mitochondrial, can be distinguished by their electrophoretic mobilities, kinetic properties, and subcellular localizations. Most Caucasians have two major isozymes, while approximately 50 % of Orientals have the cytosolic isozyme but not the mitochondrial isozyme. A remarkably higher frequency of acute alcohol intoxication among Orientals than among Caucasians could be related to the absence of a catalytically active form of the mitochondrial isozyme. The increased exposure to acetaldehyde in individuals with the catalytically inactive form may also confer greater susceptibility to many types of cancer. This gene encodes a mitochondrial isoform, which has a low Km for acetaldehydes, and is localized in mitochondrial matrix. Alternative splicing results in multiple transcript variants encoding distinct isoforms. , , ,

Aliases: ALDM, ALDHI, ALDH-E2

Molecular Weight:	56.3 kDa
-------------------	----------

Gene ID:	217
----------	-----

HGNC:	217
-------	-----

Application Details

Application Notes:	ELISA: 1:10000, WB: 1:500 - 1:2000, IHC: 1:200 - 1:1000, ICC: 1:150, FCM: 1:200 - 1:400
--------------------	---

Restrictions:	For Research Use only
---------------	-----------------------

Handling

Format:	Liquid
---------	--------

Buffer:	Ascitic fluid containing 0.03 % sodium azide.
---------	---

Preservative:	Sodium azide
---------------	--------------

Precaution of Use:	This product contains Sodium azide: a POISONOUS AND HAZARDOUS SUBSTANCE which should be handled by trained staff only.
--------------------	--

Storage:	4 °C/-20 °C
----------	-------------

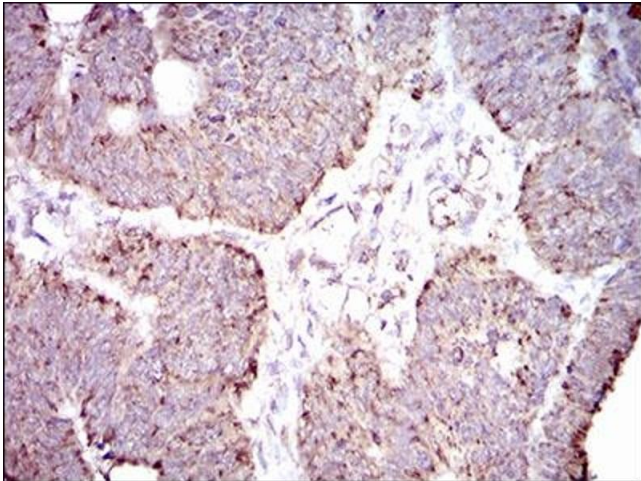
Storage Comment:	4°C, -20°C for long term storage
------------------	----------------------------------

Publications

Product cited in:	Nayernia, Adham, Burkhardt-Göttges, Neesen, Rieche, Wolf, Sancken, Kleene, Engel: "
-------------------	---

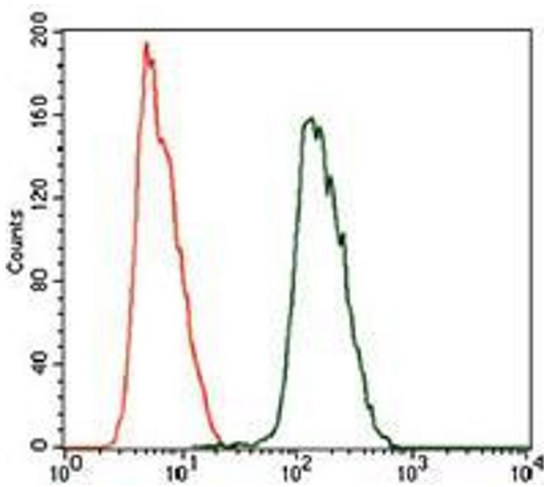
Asthenozoospermia in mice with targeted deletion of the sperm mitochondrion-associated cysteine-rich protein (Smcp) gene." in: **Molecular and cellular biology**, Vol. 22, Issue 9, pp. 3046-52, (2002) ([PubMed](#)).

Images



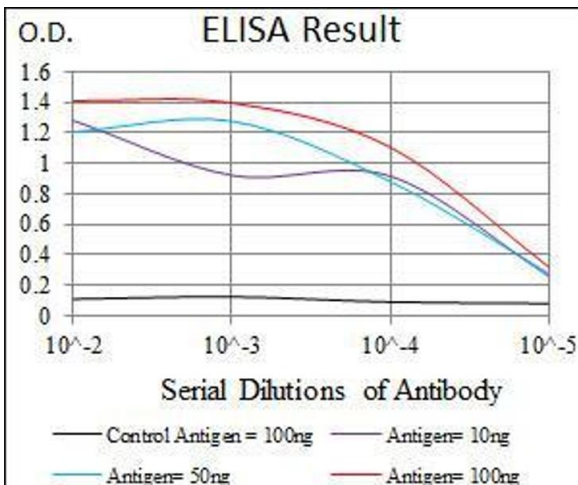
Immunohistochemistry

Image 1. Immunohistochemical analysis of paraffin-embedded rectum cancer tissues using ALDH2 mouse mAb with DAB staining.



Flow Cytometry

Image 2. Flow cytometric analysis of HeLa cells using ALDH2 mouse mAb (green) and negative control (purple).



ELISA

Image 3. Black line: Control Antigen (100 ng), Purple line: Antigen(10 ng), Blue line: Antigen (50 ng), Red line: Antigen (100 ng),

Images

Please check the [product details page](#) for more images. Overall 8 images are available for ABIN1724795.